

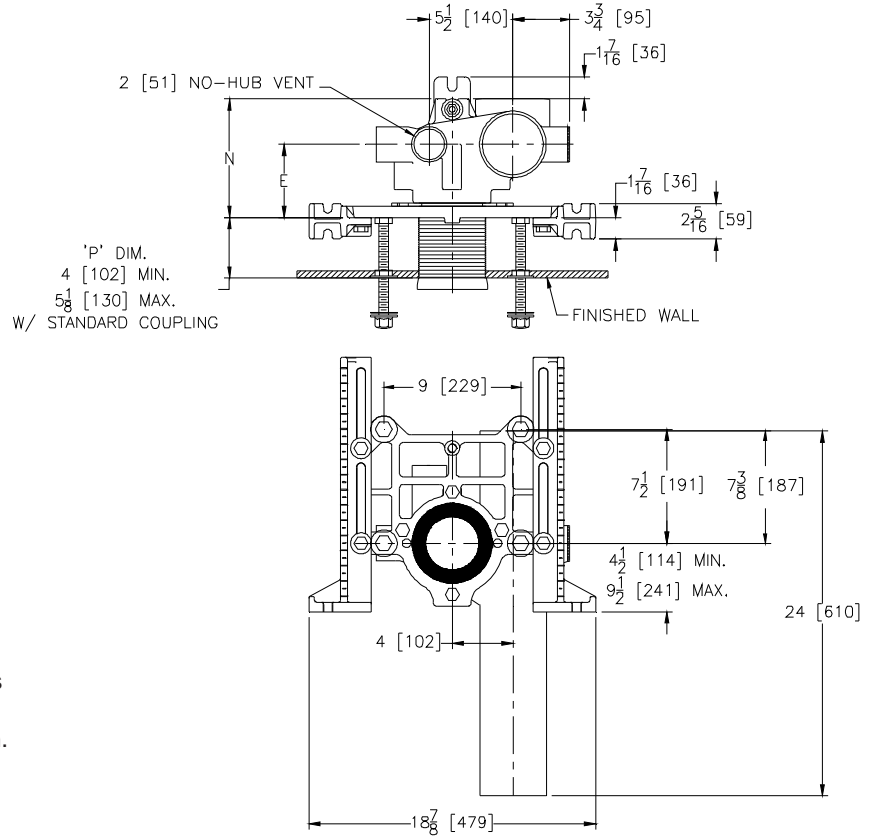


Z1209-86

VERTICAL OFFSET SIPHON JET WATER CLOSET SUPPORT SYSTEM WITHOUT AUXILIARY INLETS

TAG _____

Dimensional Data (inches and [mm]) are Subject to Manufacturing Tolerances and Change Without Notice



Note:

1. Min. 'P' Dim. Obtainable=2 [51]
2. Feet bolted to floor using min. 1/2 [13] dia. bolts and back slots on carrier feet.
3. Back anchor foot required for secure installation.

| Product No. | Dimension In Inches | | Approx. Wt. Lbs. [kg] |
|------------------|---------------------|--------------|-----------------------|
| | E | N | |
| Z1209-NL4/NR4-86 | 4-13/16[122] | 7-13/16[198] | 67 [30] |
| Z1209-HL4/HR4-86 | 4-13/16[122] | 7-13/16[198] | 82 [37] |

ENGINEERING SPECIFICATION: ZURN Z1209(-)-86 Vertical Offset Siphon Jet Water Closet "Rigid System" with 4 [102] size No-Hub or Hub and Spigot connections and 2 [51] vent. Complete with Dura-Coated cast iron main fitting, universal floor mounted foot supports, adjustable faceplate, corrosion resistant adjustable ABS coupling with integral test cap, fixture trim, and stud protectors. Rear anchor tie down, and bonded "Neo-Seal" gasket.

PRODUCT/DEFINITION

- _____ Z1209-NL4-86 4 [102] No-Hub Stack, Left Hand Offset Inlet, 2 [51] Left Hand Vent
- _____ Z1209-NR4-86 4 [102] No-Hub Stack, Right Hand Offset Inlet, 2 [51] Right Hand Vent
- _____ Z1209-HL4-86 4 [102] Hub & Spigot Stack, Left Hand Offset Inlet, 2 [51] Left Hand Vent
- _____ Z1209-HR4-86 4 [102] Hub & Spigot Stack, Right Hand Offset Inlet, 2 [51] Right Hand Vent

PREFIXES

- _____ Z D.C.C.I. System with Zurn "ZZ" Adjustable Coupling
- _____ ZQ D.C.C.I. System with Non-Adjustable Coupling

SUFFIXES

- _____ -A Auxiliary Support Assembly (For P-Dim. greater than 18 [457])
- _____ -B Blowout Type Fixture Support
- _____ -CC Cast Iron Coupling
- _____ -CL Coupling Length Greater than 12 [305] (Specify length if greater than 6 [152])
- _____ -F Floor Mounted, Back Outlet Fixture Support
- _____ -G Galvanized Cast Iron
- _____ -M Auxiliary Foot Support (For P-Dim. 10 [254] to 18 [457])
- _____ -VP Vandal Proof Trim
- _____ -X3 3 [76] Foot Extension Assembly
- _____ -X4 4 [102] Foot Extension Assembly
- _____ -29 Mechanical Test Cap Assembly (Previously Z1210-29)
- _____ -45 Finishing Frame for Siphon Jet System (Previously Z1210-45)
- _____ -50 Flush Valve Supply Support for W.C.
- _____ -61 "ZZ" Coupling Wrench

*REGULARLY FURNISHED UNLESS OTHERWISE SPECIFIED

| | | |
|---------------------------------------|---------------|-----------------|
| REV. | DATE: 8/31/09 | C.N. NO. 110139 |
| DWG. NO. P-15753 PRODUCT NO. Z1209-86 | | |