



ZQF1201-ND4-F_

ONE-PIECE COMBINATION BACK-TO-BACK FOOT/FACEPLATE
EZCARRY® HORIZONTAL HIGH PERFORMANCE SIPHON JET NO-
HUB WATER CLOSET CARRIER SYSTEM W/ NON-ADJUSTABLE
COUPLING

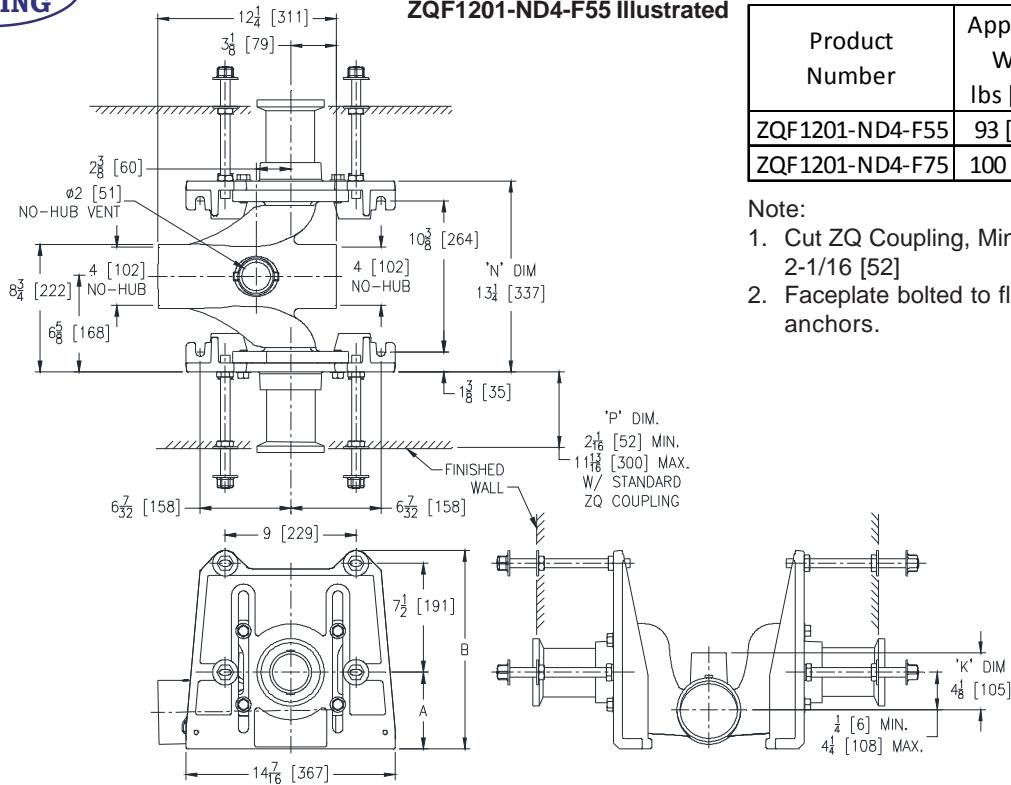
SPECIFICATION SHEET

TAG _____

**PATENT
PENDING**

Dimensional Data (inches and [mm]) are Subject to Manufacturing Tolerances and Change Without Notice

ZQF1201-ND4-F55 Illustrated



Product Number	Approx. Wt. lbs [kg]	Dimensions in in [mm]	
		A	B
ZQF1201-ND4-F55	93 [42]	5-1/2 [140]	13-7/8 [352]
ZQF1201-ND4-F75	100 [46]	7-1/2 [191]	15-7/8 [403]

Note:

1. Cut ZQ Coupling, Min. 'P' Dim. Obtainable = 2-1/16 [52]
2. Faceplate bolted to floor using min. 1/2 [13] dia. anchors.

ENGINEERING SPECIFICATION: ZURN ZQF1201-ND4-F_

EZCarry® One-piece combination floor mounted foot/faceplate horizontal siphon jet water closet carrier system, supplied for () rough-in height, with high performance Dura-Coated cast iron main fitting with hydro-mechanically optimized sweep, 4" [102 mm] no-hub connections and extended 2" [51 mm] vent. Corrosion resistant, non-adjustable 3" [76 mm] dia. X 6" [152 mm] NPT couplings with integral test caps, designed to increase flow velocity and line carry, and labor saving "Neo-Seal" bonded gaskets optimize flow performance while reducing installation steps. Complete system includes one-piece combination foot/faceplates; heavy-duty 1/2" [13 mm] rear anchor tie downs; fixture bolts, trim and stud protectors. EZCarry® one-piece combination floor mounted foot/faceplate system complies with all applicable requirements of ASME A112.6.1M up to a 500 lbs [227 kg] maximum static load.

OPTIONS (Check/specify appropriate options)

- ___ ZQF1201-ND4-F55 4 [102] No-Hub Back-to-Back Inlet (Double) with 5-1/2 [140] Non-Adjustable Rough-In Height
___ ZQF1201-ND4-F75 4 [102] No-Hub Back-to-Back Inlet (Double) with 7-1/2 [191] Non-Adjustable Rough-In Height

PREFIXES

- ___ ZQF D.C.C.I. System with NPT Faceplate, Non-Adjustable Coupling*

SUFFIXES

- | | | | |
|---------|--|---------|--|
| ___ -A | Auxiliary Support Assembly
(For 'P' Dim. Greater than 18 [457]) | ___ -G | Galvanized Cast Iron |
| ___ -CC | Corrosion Resistant Cast Iron Coupling
(2-1/4 to 12 [57 to 305]) | ___ -M | Auxiliary Foot Support
(for 'P' Dim. 10 thru 18 [254 thru 457]) |
| ___ -CE | EZ-Set™ Coupling (NPSM 6 [152], 12 [305] or custom)
(NPT 12 [305] or custom) | ___ -VP | Vandal-Proof Trim |
| ___ -CL | Custom Length Standard Coupling with Integral Test Cap
(Specify Length 4, 8, 10, 12 [102, 203, 254, 305]) | ___ -45 | Finishing Frame for Siphon Jet System |
| ___ -CS | 2-1/4 [57] Polymer Coupling with Integral Test Cap
(ZZ Coupling Only) | ___ -50 | Flush Valve Supply Support for Water Closets |
| ___ -F | Floor Mounted, Back Outlet Fixture Support | | |

* Regularly furnished unless otherwise specified.