



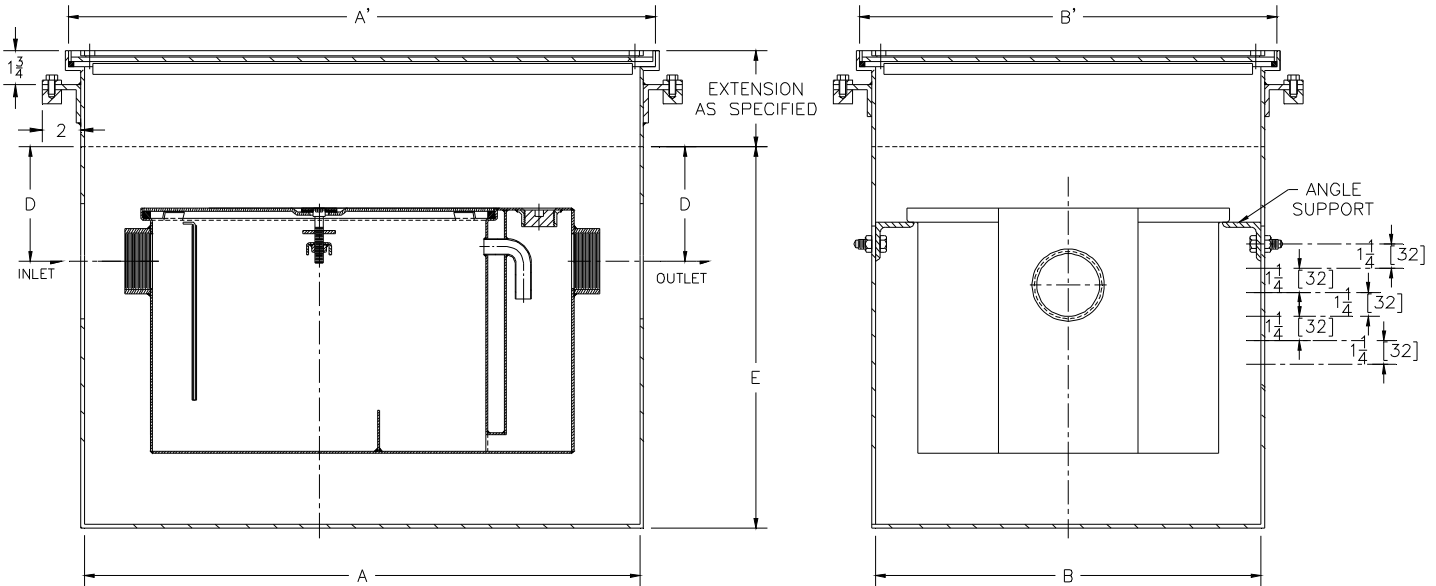
Z1170-E-KC-RE

ADJUSTABLE RECESSING RECEIVER FOR GREASE
INTERCEPTOR W/INTEGRAL EXTENSION AND ANCHOR
FLANGE WITH CLAMP COLLAR

SPECIFICATION SHEET

TAG _____

Dimensional Data (inches and [mm]) are Subject to Manufacturing Tolerances and Change Without Notice



Size	Dimensions in Inches [mm]					
	A	A'	B	B'	D	E
100	21-3/8 [543]	23-3/8 [594]	13-3/8 [340]	15-3/8 [391]	4-3/8 [111]	19 [483]
200	22-3/4 [578]	24-3/4 [629]	15-3/8 [391]	17-3/8 [441]	5 [127]	20-1/8 [551]
300	25 [635]	27 [686]	17-1/2 [445]	19-1/2 [495]	5-1/2 [140]	20-3/4 [527]
400	25-3/4 [654]	27-3/4 [705]	20 [508]	22 [559]	6 [152]	22-3/8 [568]
500	29-1/2 [749]	31-1/2 [800]	20-3/4 [527]	22-3/4 [578]	5-1/4 [133]	24 [610]
600	34 [864]	36 [914]	23-1/4 [591]	25-1/4 [641]	6-1/2 [165]	25-3/4 [654]
700	35 [889]	37 [940]	26 [660]	28 [711]	6-1/2 [165]	26-3/4 [679]
800	37-1/4 [946]	39-1/4 [997]	28 [711]	30 [762]	7-1/2 [191]	30-1/2 [775]

ENGINEERING SPECIFICATION: ZURN Z1170-E-KC-RE

Acid Resistant Epoxy Coated Recessing receiver, enclosed type, equipped with adjustable support brackets, anchor flange 2" [51mm] wide with clamp collar, and gasketed non-skid cover with recessed and covered lift handle. Complete with Z1170 Grease Interceptor. For interceptor specifications see Z1170 specification sheet.

PREFIXES

____ Z Acid Resistant Coated Fabricated Steel*

SUFFIXES

____ -T Cover recessed for tile/terrazzo. A 3 [76] minimum extentension height is required. (Specify required recess depth-1/8 [3], 3/4 [19], or 1-1/4 [32]).

* Regularly furnished unless otherwise specified.