



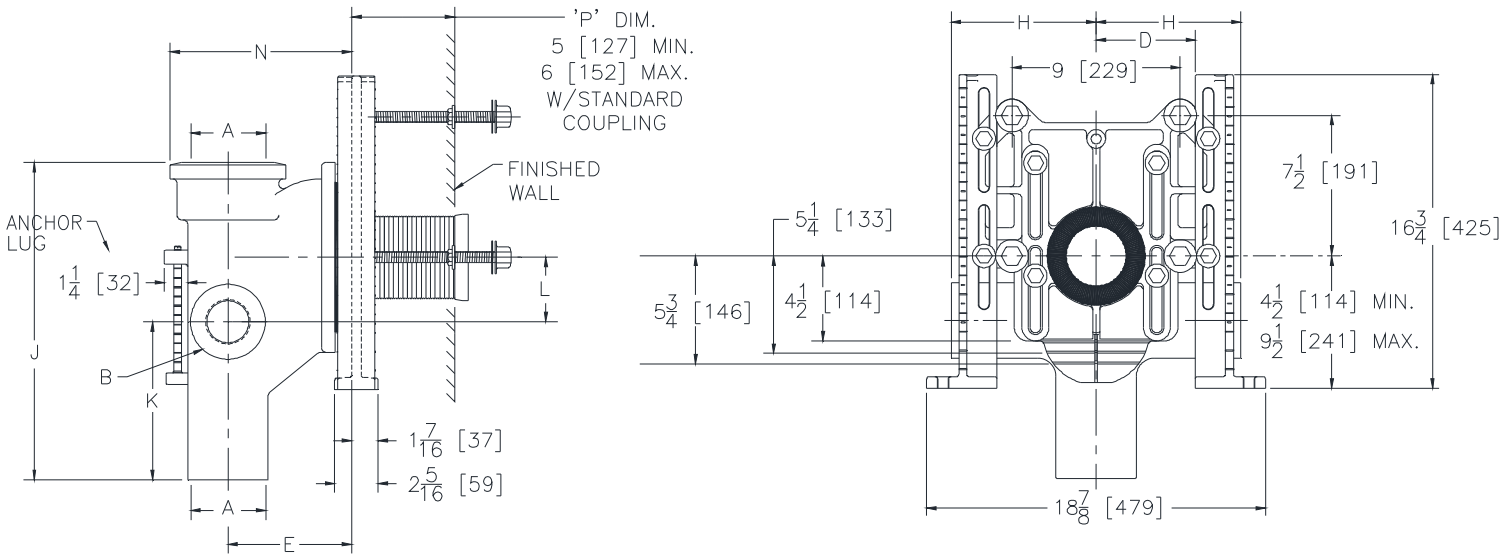
# Z1204-2H

## ADJUSTABLE VERTICAL SIPHON JET - HUB & SPIGOT WITH SIDE INLETS

SPECIFICATION SHEET

TAG \_\_\_\_\_

Dimensional Data (inches and [ mm ]) are Subject to Manufacturing Tolerances and Change Without Notice



**Note:**

1. Min. 'P' dim. obtainable = 2 [51] with cut standard coupling.
2. Feet bolted to floor using min. 1/2 dia. bolts and back slots on carrier feet.

'B' Dim = Side Outlet Size

'D' Dim = Centerline of Vent

Product No.	Dimensions in Inches [mm]									Approx. Wt. Lbs [kg]	
	A	B	D	E	H	J	K	L			N
								Mn.	Max.		
Z1204-2H4	4 [102]	4 [102]	5 [127]	6-5/8 [168]	7-1/2 [191]	24 [610]	15-1/2 [394]	1-5/8 [42]	5-5/8 [143]	9-3/4 [248]	172 [78]

**ENGINEERING SPECIFICATION: ZURN Z1204-2H4**

Adjustable, vertical siphon jet water closet "Rigid System" with 4" [102mm] hub and spigot connections. Complete with Dura-Coated cast iron main fitting with 4" [102mm] side inlets, 2" [51mm] vent, adjustable gasketed face plate, universal floor mounted foot supports, corrosion resistant adjustable polymer coupling with integral test cap, fixture bolts, trim, stud protectors, rear anchor tie down, and bonded "Neo-Seal" gasket.

**PRODUCT/DEFINITION**

\_\_\_\_\_ Z1204-2H4 Hub & Spigot Stack, Single Inlet, (2) Side Inlets, 2 [51] Right Hand Vent.

**PREFIXES**

- \_\_\_\_\_ Z D.C.C.I. System with Zurn "ZZ" Adjustable Coupling
- \_\_\_\_\_ ZQ D.C.C.I. System with NPT Face Plate, Non Adjustable Coupling

**SUFFIXES**

- \_\_\_\_\_ -A Auxiliary Support Assembly (For 'P'-Dim. Greater than 18[457])
- \_\_\_\_\_ -B Blowout Type Fixture Support
- \_\_\_\_\_ -CC Cast Iron Coupling 6 [152] Long
- \_\_\_\_\_ -CL Coupling Length Other than Standard 6 [152] (Specify Length Required)
- \_\_\_\_\_ -F Floor Mounted Back Outlet, Fixture Support
- \_\_\_\_\_ -M Auxiliary Foot Support (For 'P'-Dim. 10 [254] - 18 [457])
- \_\_\_\_\_ -PF Pre-Fab Foot
- \_\_\_\_\_ -PS Pre-Fab Slotted Foot
- \_\_\_\_\_ -RYK Unistrut Pre-Fab Foot
- \_\_\_\_\_ -VP VandalProof Trim
- \_\_\_\_\_ -X3 3 [76] Carrier Foot Extension Assembly (See Z1200-FT-EXT-3)
- \_\_\_\_\_ -X4 4 [102] Carrier Foot Extension Assembly (See Z1200-FT-EXT-4)
- \_\_\_\_\_ -45 Finishing Frame for Siphon Jet System (See Z1200-FINFRAME-SJ)
- \_\_\_\_\_ -50 Flush Valve Supply Support for W.C. (See Z1200-SPLY-SPRT-WC)

\* Regularly furnished unless otherwise specified.