

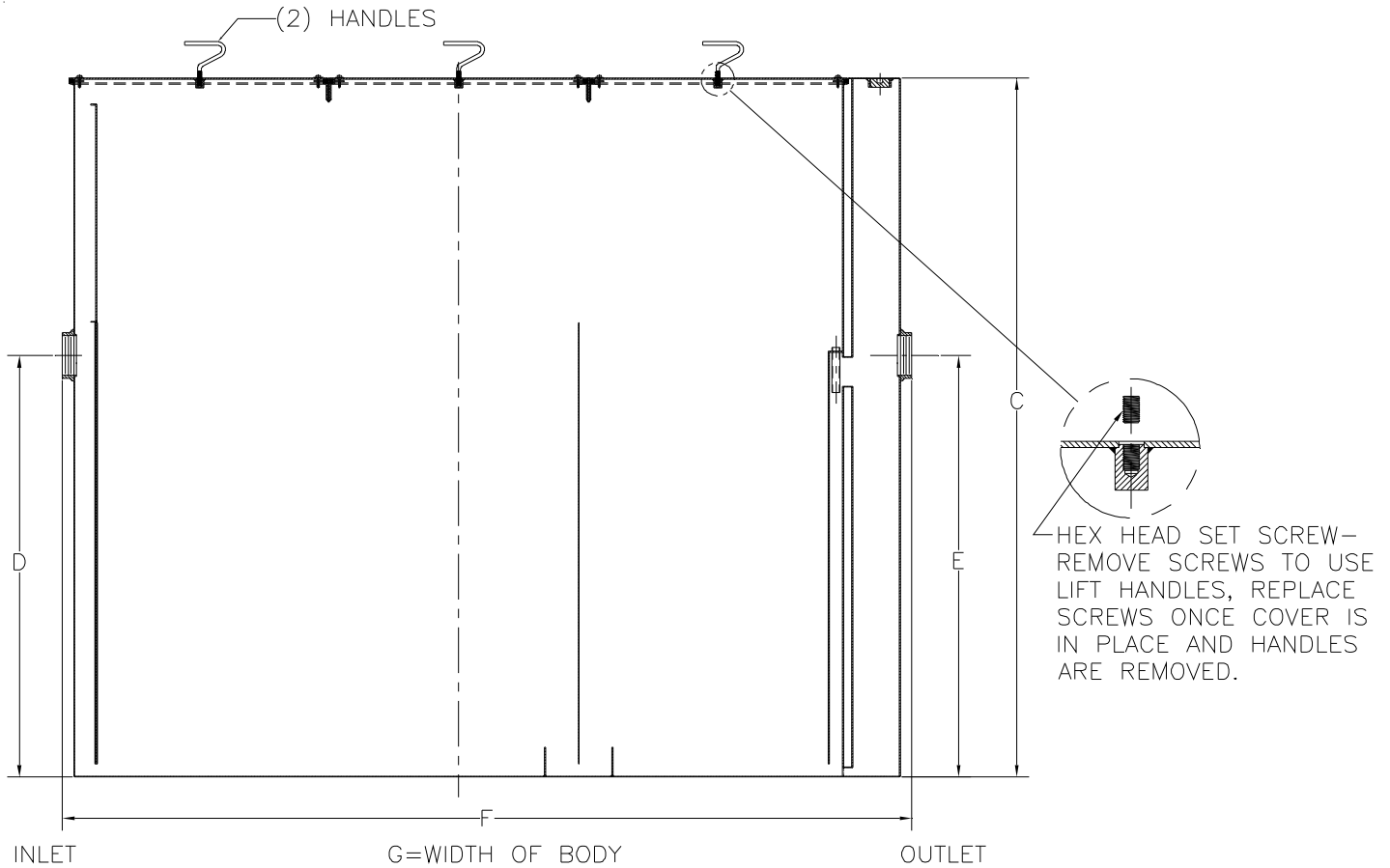


# Z1172-129 LARGE CAPACITY GREASE INTERCEPTOR

SPECIFICATION SHEET

TAG \_\_\_\_\_

Dimensional Data (inches and [ mm ]) are Subject to Manufacturing Tolerances and Change Without Notice



Size	Inlet/ Outlet Size**	Flow Rate G.P.M. [L]	Capacity		No. of Covers	Approx. Wt. Lbs. [kg]	Dimensions in Inches			
			Water Gal. [L]	Grease Lbs. [kg]			C	D/E	F	G
1900	6 [152]	500 [1890]	1440 [5443]	1000 [454]	3	3572 [1620]	85 5/8 [2175]	51 5/8 [1311]	104 [2642]	74 [1880]

**ENGINEERING SPECIFICATION:** ZURN Z1172-129

Large capacity Acid Resistant Coated interior and exterior fabricated steel grease interceptor, rated at \_\_\_\_ GPM and \_\_\_\_ Lbs. grease capacity, with internal air relief by-pass, bronze cleanout plug and visible double wall trap seal with removable pressure equalizing/flow diffusing baffle. Gasketed non-skid secured cover with removable lift handle, complete with flow control fitting. Regularly furnished with inlet and outlet in high position.

**OPTIONS** (Check/specify appropriate options)

**PREFIXES**

- \_\_\_\_\_ Z Acid Resistant Coated Fabricated Steel\*
- \_\_\_\_\_ ZS All Type 304 Fabricated Stainless Steel

**SUFFIXES**

- \_\_\_\_\_ -AL Aluminum Cover
- \_\_\_\_\_ -HD Heavy duty traffic cover rated at 10,000 lbs. [4536 kg.] maximum safe live load.
- \_\_\_\_\_ -K Anchor flange 1 3/4 [44] down from top and 2 [51] wide.
- \_\_\_\_\_ -KC Anchor flange 1 3/4 [44] down from top and 2 [51] wide with clamp collar.
- \_\_\_\_\_ -L Angle type (Z1108-L) flow control device.
- \_\_\_\_\_ -RE Acid Resistant Coated Interior and exterior fabricated steel recessing receiver enclosed type for recessed installation. Furnished with adjustable support brackets and gasketed non-skid cover with covered recessed lift handle.

<b>REV. A</b>	<b>DATE: 06/03/08</b>	<b>C.N. NO. 98581</b>
<b>DWG. NO. P-15170</b>	<b>PRODUCT NO. Z1172-129</b>	

\*REGULARLY FURNISHED UNLESS OTHERWISE SPECIFIED