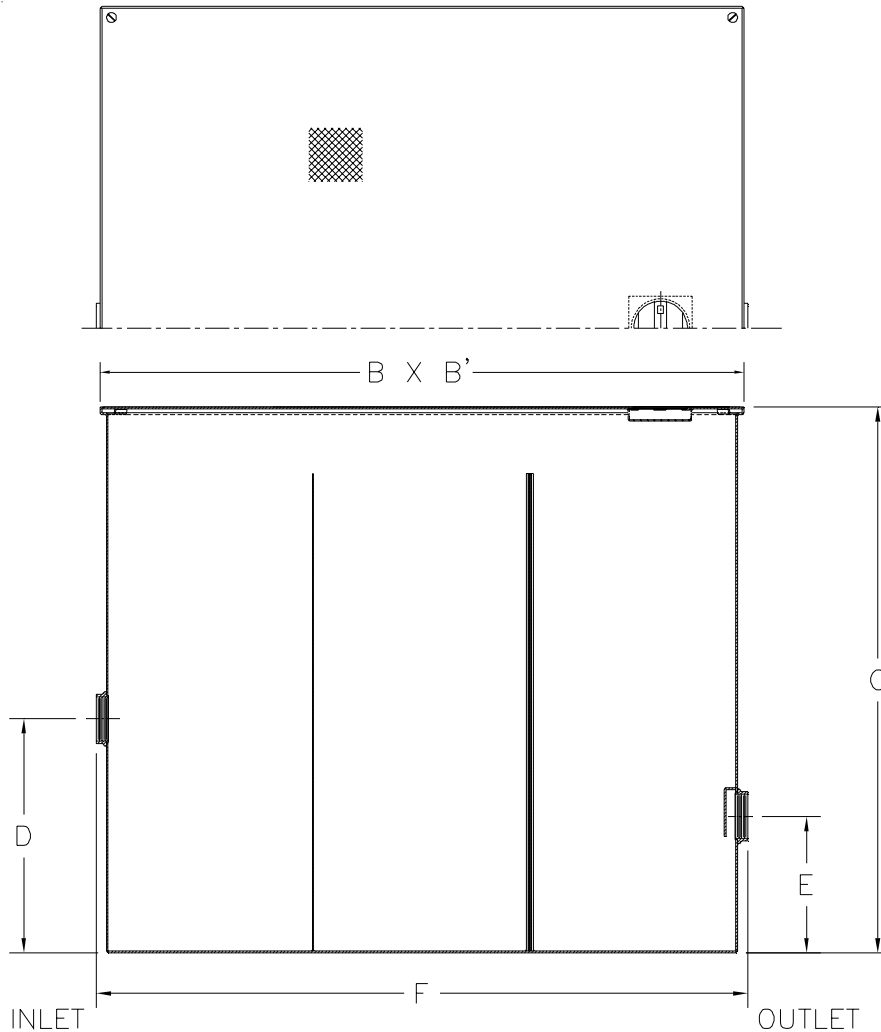




Z1185-111 LINT INTERCEPTOR

SPECIFICATION SHEET
TAG _____

Dimensional Data (inches and [mm]) are Subject to Manufacturing Tolerances and Change Without Notice



Size No. of Machines	Inlet/Outlet Size**	Flow Rate G.P.M. [L]	Approx. Wt. Lbs. [kg]	Dimensions In Inches					
				B	B'	C	D	E	F
10	4 [102]	100 [378]	271 [123]	33 [838]	33 [838]	28 [711]	12 [305]	7 [178]	34 [864]

ENGINEERING SPECIFICATION: ZURNZ1185-111

Acid Resistant Coated interior and exterior fabricated steel lint interceptor, non-skid secured cover, with stainless lint intercepting secondary screen assembly and permanent primary straining baffle. Regularly furnished with high inlet and low outlet.

OPTIONS (Check/specify appropriate options)

PREFIXES

_____ Z Acid Resistant Coated Fabricated Steel*

SUFFIXES

_____ RS- Stainless Steel Screen Replacement Assembly

REV.	DATE: 10/24/06	C.N. NO. 95779
DWG. NO. P-15346	PRODUCT NO. Z1185-111	

*REGULARLY FURNISHED UNLESS OTHERWISE SPECIFIED