

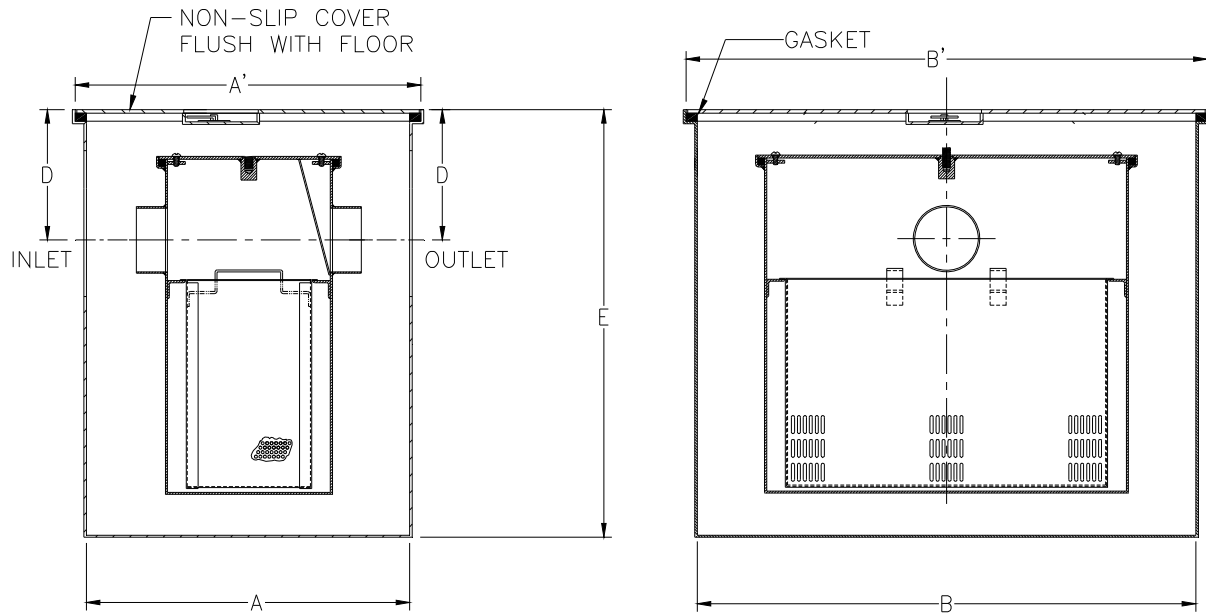


Z1183-FC-85
SOLIDS INTERCEPTOR WITH
FLUSH COVER AND RECESSING RECEIVER

SPECIFICATION SHEET

TAG _____

Dimensional Data (inches and [mm]) are Subject to Manufacturing Tolerances and Change Without Notice



Size	Inlet/ Outlet Size**	Flow Rate G.P.M.[L]	Dimension in Inches [mm]					
			A	A'	B	B'	D	E
200	3 [76]	20 [76]	21-3/8 [543]	23-3/8 [594]	17-1/4 [438]	19-1/4 [489]	5-1/4 [133]	24 [610]
300		25 [94]	21-3/8 [543]	23-3/8 [594]	19-3/8 [492]	21-3/8 [543]	6-1/2 [165]	25-3/4 [654]
400		35 [132]	21-3/8 [543]	23-3/8 [594]	21-1/8 [537]	23-1/8 [587]	6-1/2 [165]	26-3/4 [679]
500		50 [189]	21-3/8 [543]	23-3/8 [594]	22-5/8 [575]	24-5/8 [625]	7-1/2 [191]	30-1/2 [775]
600		75 [284]	21-3/8 [543]	23-3/8 [594]	25-1/4 [641]	27-1/4 [692]	9 [229]	31-1/4 [794]
700		100 [379]	21-3/8 [543]	23-3/8 [594]	27-7/8 [708]	29-7/8 [759]	8-1/2 [216]	36 [914]

ENGINEERING SPECIFICATION: ZURN
 Z1183-FC-85 Large Capacity Acid Resistant Epoxy Coated Recessing Receiver, enclosed type. Equipped with a gasketed non-skid cover with recessed and covered lift handle. Complete with Z1183-FC Solids Interceptor. For interceptor specifications see Z1183-FC specification sheet.

PREFIXES

— **Z** Acid Resistant Coated Fabricated Steel*

SUFFIXES

- **-K** Anchor flange 1-3/4 [44] down from top and 2 [51] wide. A 3 [76] minimum extension height is required when anchor flange (-K) option is specified.
- **-KC** Anchor flange 1-3/4 [44] down from top and 2 [51] wide with clamp collar. A 3 [76] minimum extension height is required when anchor flange (-KC) option is specified.
- **-T** Cover recessed for tile/terrazzo. A 3 [76] minimum extension height is required. (Specify required recess depth - 1/8 [3], 3/4 [19], or 1-1/4 [32]).

REV.	DATE: 9/19/11	C.N. NO. 122177
DWG. NO. 307677	PRODUCT NO. Z1183-FC-85	

*REGULARLY FURNISHED UNLESS OTHERWISE SPECIFIED