



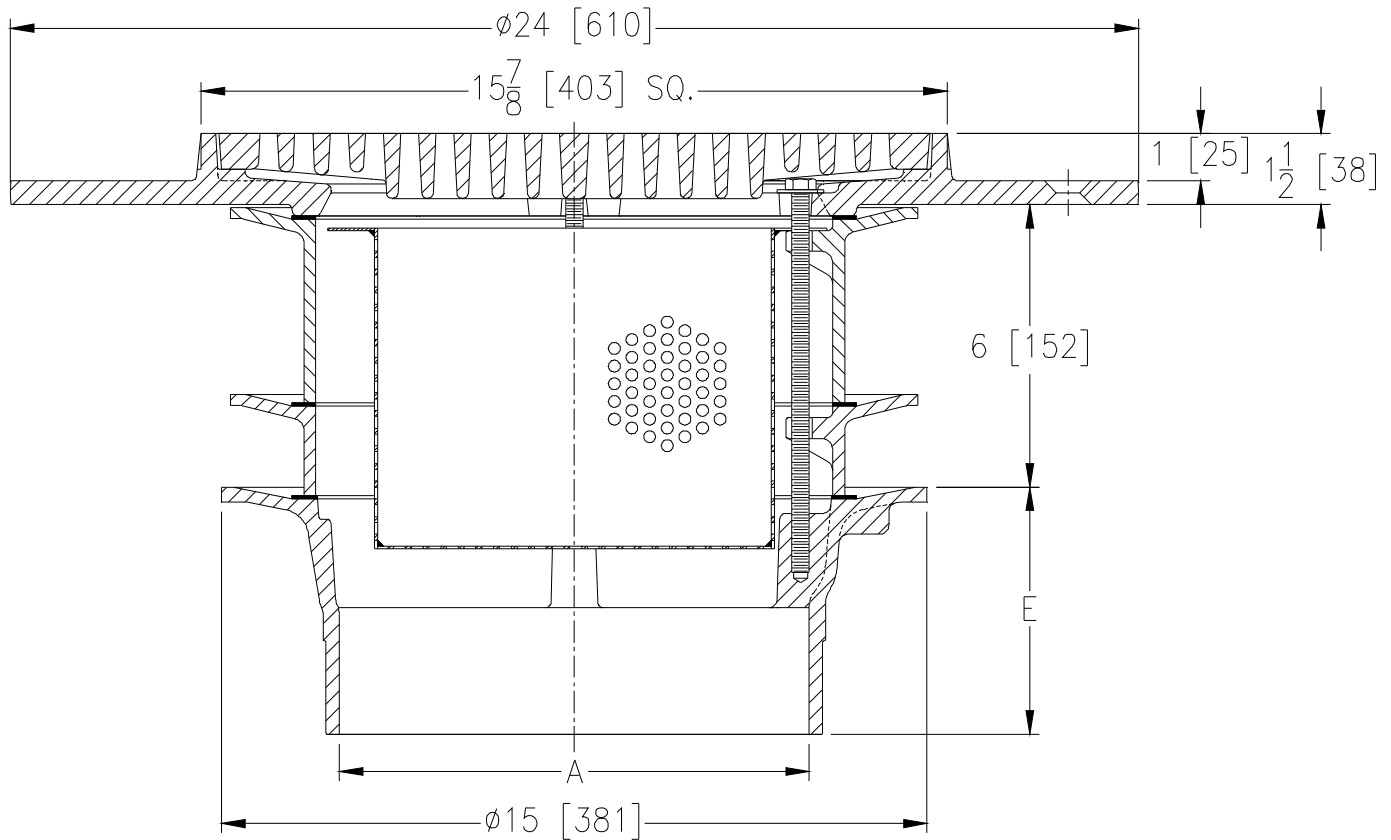
Z537-79

16 [406] SQUARE TOP HEAVY-DUTY PARKING DECK DRAIN W/ SUPPORT FLANGE, STATIC EXTENSIONS, AND DEEP FABRICATED SEDIMENT BUCKET

SPECIFICATION SHEET

TAG _____

Dimensional Data (inches and [mm]) are Subject to Manufacturing Tolerances and Change Without Notice



| A- Pipe Size In. | Approx. Wt. Lbs. [kg] | Grate Open Area Sq. In. [cm ²] |
|------------------|-----------------------|--|
| 10 [254] | 124 [56] | 79 [510] |

ENGINEERING SPECIFICATION: ZURN Z537-79
 16 [406] Square Top Parking Deck Drain, Dura-Coated cast iron body with bottom outlet, heavy-duty gasketed drain support flange, heavy-duty slotted grate, gasketed static extensions, and deep fabricated stainless steel sediment bucket.

OPTIONS (Check/specify appropriate options)

PIPE SIZE
 10 [254]

(Specify size/type) **OUTLET**
 _____ NH No-Hub

'E' BODY HT. DIM.
 5 1/4 [133]

PREFIXES

- ____ Z D.C.C.I. Body and Top*
- ____ ZB D.C.C.I. Body with Polished Bronze Top (Add 3/16 [5] to 1 1/2 [38] Dim.)
- ____ ZN D.C.C.I. Body with Polished Nickel Bronze Top(Add 3/16 [5] to 1 1/2 [38] Dim.)

SUFFIXES

- ____ -C Underdeck Clamp
- ____ -DG Duresist Grate
- ____ -G Galvanized Cast Iron
- ____ -VP Vandal-Proof Secured Top

| | | |
|--------------------------------------|----------------|-----------------|
| REV. | DATE: 11/25/09 | C.N. NO. 110460 |
| DWG. NO. P-15803 PRODUCT NO. Z537-79 | | |

*REGULARLY FURNISHED UNLESS OTHERWISE SPECIFIED