



# EZ-6-VP

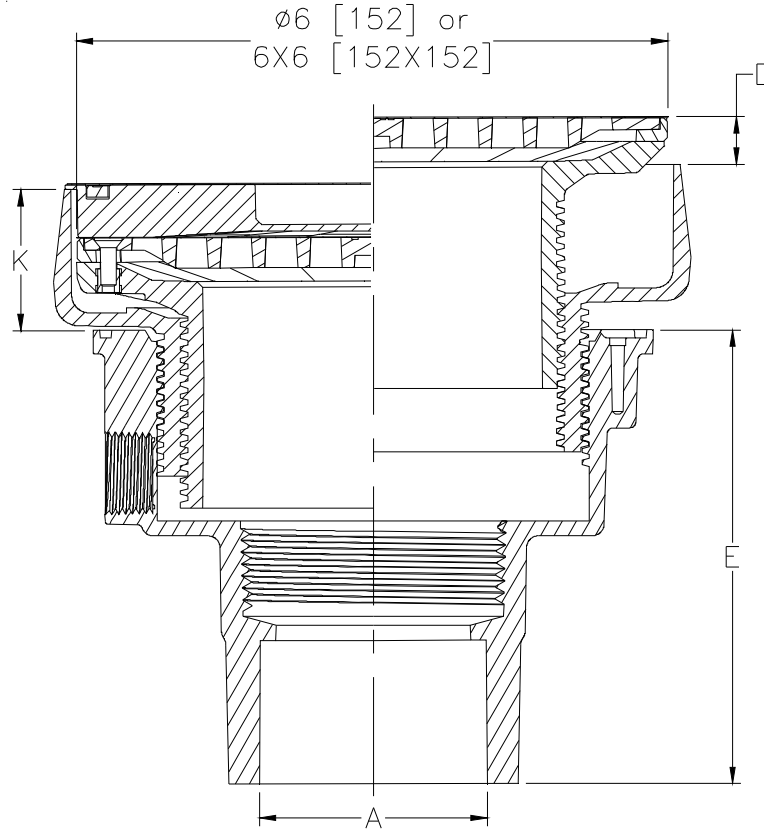
6 [152] TOP ASSEMBLY ADJUSTABLE ON GRADE  
FLOOR DRAIN WITH EZ1™ TECHNOLOGY AND  
VANDAL-PROOF SCREWS

SPECIFICATION SHEET

TAG \_\_\_\_\_

**PATENT  
PENDING**

Dimensional Data (inches and [ mm ]) are Subject to Manufacturing Tolerances and Change Without Notice



Product Number		Dimensions in Inches [mm]						Approx. Wt. Lbs [kg]	Strainer Open Area Sq. In [cm <sup>2</sup> ]	Strainer Type
		A	E	D		K				
PVC Body	ABS Body	Pipe Size	Body Height	Min	Max	Min	Max			
EZ-PV2-R6	EZ-AB2-R6	2,3 [51,76]	4-3/4 [121]	0	1-1/16 [27]	1-7/16 [37]	2-17/32 [64]	4 [2]	9 [58]	Nickel Bronze Round
EZ-PV3-R6	EZ-AB3-R6	3,4 [76,102]	3-3/4 [95]	0	1-1/16 [27]	1-7/16 [37]	2-17/32 [64]	4 [2]	9 [58]	Nickel Bronze Round
EZ-PV4-R6	EZ-AB4-R6	4 [102]	3 -15/16 [100]	0	1-1/16 [27]	1-7/16 [37]	2-17/32 [64]	4 [2]	9 [58]	Nickel Bronze Round
EZ-PV2-S6	EZ-AB2-S6	2,3 [51,76]	4-3/4 [121]	0	1 [25]	1-11/16 [43]	2-23/32 [69]	5 [2]	13 [84]	Nickel Bronze Square
EZ-PV3-S6	EZ-AB3-S6	3,4 [76,102]	3-3/4 [95]	0	1 [25]	1-11/16 [43]	2-23/32 [69]	5 [2]	13 [84]	Nickel Bronze Square
EZ-PV4-S6	EZ-AB4-S6	4 [102]	3 -15/16 [100]	0	1 [25]	1-11/16 [43]	2-23/32 [69]	5 [2]	13 [84]	Nickel Bronze Square
EZ-PV2-R6-SS	EZ-AB2-R6-SS	2,3 [51,76]	4-3/4 [121]	0	1-1/16 [27]	1-7/16 [37]	2-17/32 [64]	4 [2]	9 [58]	Stainless Steel Round
EZ-PV3-R6-SS	EZ-AB3-R6-SS	3,4 [76,102]	3-3/4 [95]	0	1-1/16 [27]	1-7/16 [37]	2-17/32 [64]	4 [2]	9 [58]	Stainless Steel Round
EZ-PV4-R6-SS	EZ-AB4-R6-SS	4 [102]	3 -15/16 [100]	0	1-1/16 [27]	1-7/16 [37]	2-17/32 [64]	4 [2]	9 [58]	Stainless Steel Round
EZ-PV2-S6-SS	EZ-AB2-S6-SS	2,3 [51,76]	4-3/4 [121]	0	1 [25]	1-11/16 [43]	2-23/32 [69]	5 [2]	13 [84]	Stainless Steel Square
EZ-PV3-S6-SS	EZ-AB3-S6-SS	3,4 [76,102]	3-3/4 [95]	0	1 [25]	1-11/16 [43]	2-23/32 [69]	5 [2]	13 [84]	Stainless Steel Square
EZ-PV4-S6-SS	EZ-AB4-S6-SS	4 [102]	3 -15/16 [100]	0	1 [25]	1-11/16 [43]	2-23/32 [69]	5 [2]	13 [84]	Stainless Steel Square

### ENGINEERING SPECIFICATION: ZURNEZ-6-VP

Zurn EZ1™ floor and shower drain, PVC or ABS solvent weld body with bottom outlet and 1/2" [13] trap primer connection knock-out plug and vandal-proof top assembly. EZ1™ drainage series is engineered to simplify product installation, comprised of concrete shield, up to 1-1/16" [32] of vertical post pour adjustment, pre-packaged shims for tilt correction and integrated self-contained square or round light duty strainer in nickel bronze or stainless steel with rough-in cover for protection during the concrete pour.

### SUFFIXES

- \_\_\_ -EF 3/4 [19] Extension Frame
- \_\_\_ -TSP Trap Seal Protection Device (Size Matches Drain Outlet Selected, Not Available in 4") (See Z1072)
- \_\_\_ -U 2 to 3-1/4 [51 to 83] High Extension Adapter
- \_\_\_ -Y Sediment Bucket