

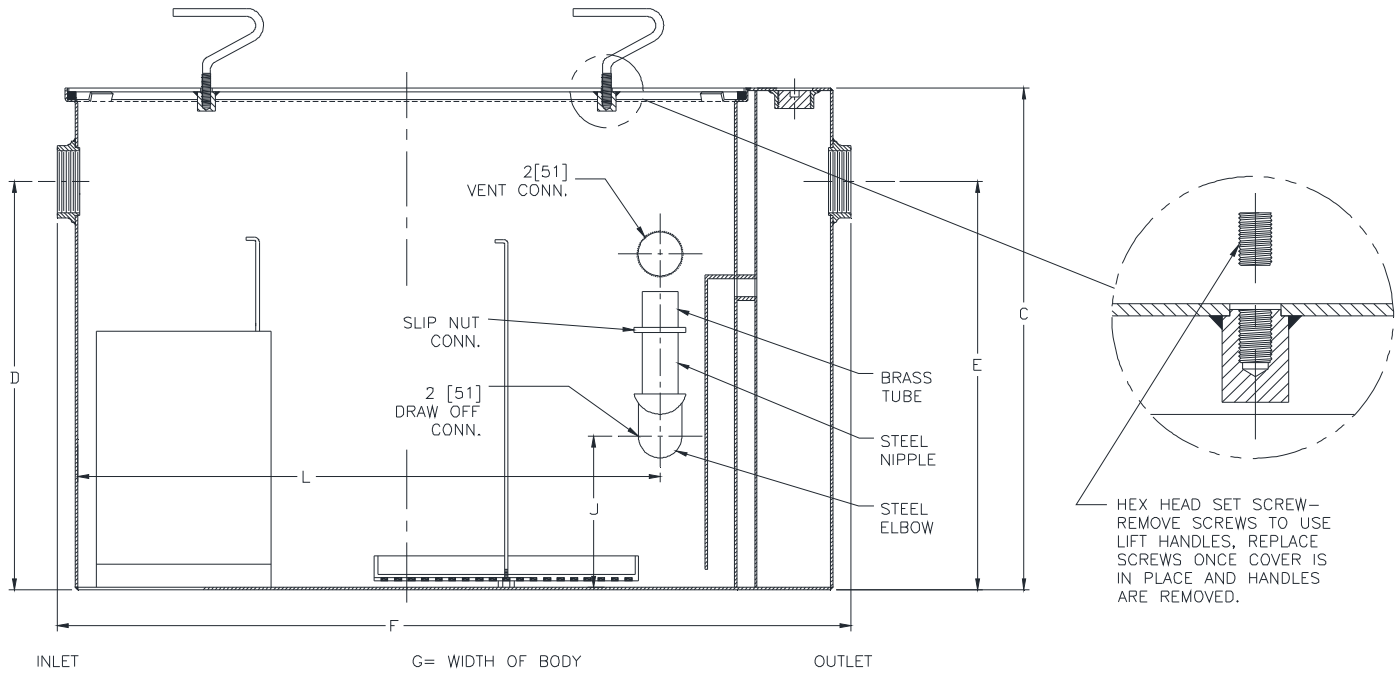


**Z1188-177**  
**150 GPM [568 LPM] LARGE CAPACITY OIL**  
**INTERCEPTOR WITH 6 [152] INLET / OUTLET**

**SPECIFICATION SHEET**

**TAG** \_\_\_\_\_

Dimensional Data (inches and [ mm ]) are Subject to Manufacturing Tolerances and Change Without Notice



Flow Rate GPM [LPM]	Inlet / Outlet Size In. [mm]	Water Capacity Gal. [L]	Aprox. Wt. Lbs. [kg]	No. of Covers	Dimensions in Inches [mm]					
					C	D / E	F	G	J	L
150 [568]	6 [152]	190 [719]	780 [354]	2	30-3/4 [781]	25-1/2 [648]	56 [1422]	41-3/8 [1051]	13-1/8 [333]	43-7/8 [1114]

**ENGINEERING SPECIFICATION: ZURN Z1188-177**

Large capacity acid resistant coated interior and exterior fabricated steel oil interceptor, with bronze cleanout plug and visible double wall trap seal, removable combination pressure equalizing/flow diffusing baffle and sediment bucket, horizontal baffle, adjustable oil drawoff and vent connections either side. Secured gasketed non-skid cover complete with flow control fitting. Regularly furnished with 6" [152mm] inlet and outlet in high position.

**OPTIONS** (Check/specify appropriate options)

**PREFIXES**

\_\_\_ Z Acid Resistant Coated Fabricated Steel\*

**SUFFIXES**

- \_\_\_ -E Acid resistant coated interior and exterior fabricated steel extension section. (Specify 'C' Dim. required) for recessed installation.
- \_\_\_ -HD Heavy-duty traffic cover rated at 10,000 lbs [4536] kg. maximum safe live load.
- \_\_\_ -K Anchor flange 1-3/4 [44] down from top and 2 [51] wide. No extension required to accommodate -K.

\* Regularly furnished unless otherwise specified.