



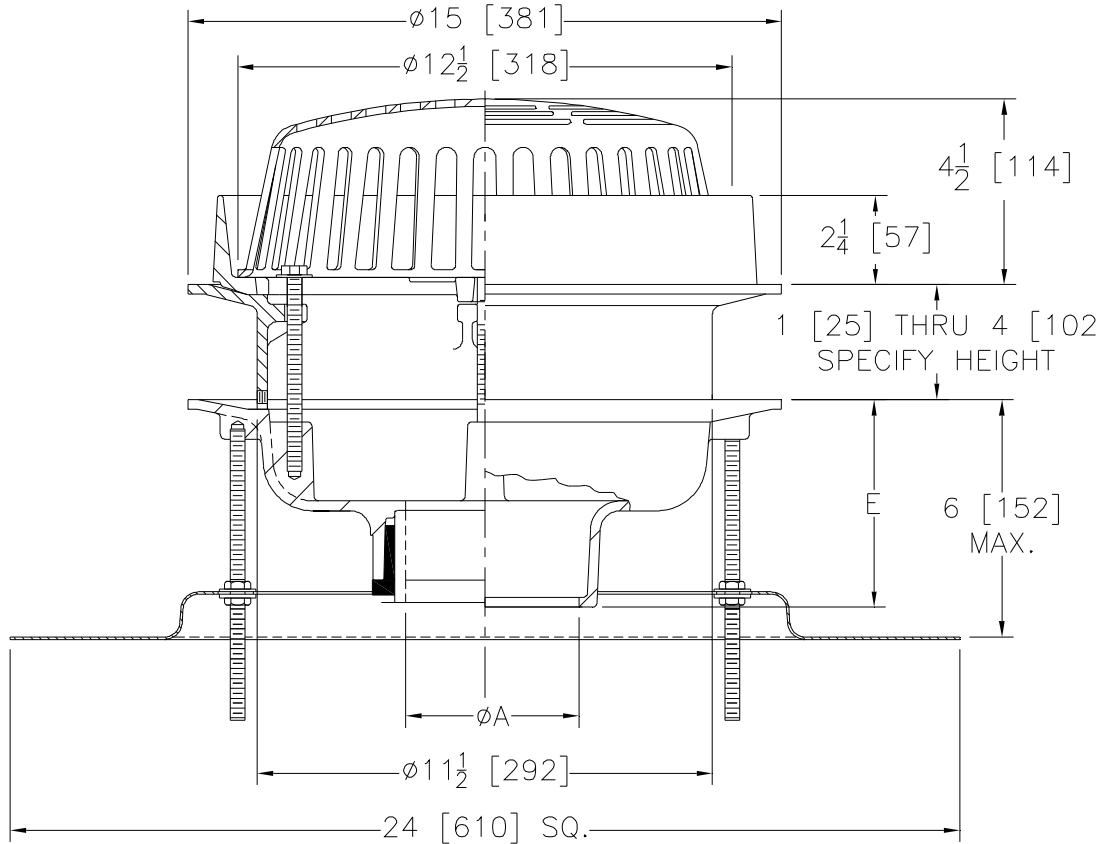
# Z100-174

SPECIFICATION SHEET

15 [381] DIAMETER MAIN ROOF DRAIN W/ EXTERNAL WATER DAM,  
 STATIC EXTENSION & TOP-SET® ADJUSTABLE EXTENSION ASSEMBLY

TAG \_\_\_\_\_

Dimensional Data (inches and [mm]) are Subject to Manufacturing Tolerances and Change Without Notice



A- Pipe Size In.	Approx. Wt. Lbs. [kg]	Dome Open Area Sq. In. [cm <sup>2</sup> ]
2-3-4 [51-76-102]	36 [16]	103 [665]
5-6 [127-152]	37 [17]	
8 [204]	38 [17]	

**ENGINEERING SPECIFICATION: ZURN Z100-174**

15 [381] Diameter roof drain. Galvanized cast iron body with stainless steel combination membrane flashing clamp/gravel guard 2 [51] high external water dam, static extension and low silhouette Dome strainer and Top-Set® Adjustable Extension Assembly using an inverted deck plate.

**OPTIONS** (Check/specify appropriate options)

**PIPE SIZE**

- 2 thru 6, 8 [51 thru 152,204]
- 2 thru 6, 8 [51 thru 152,204]
- 2 thru 6, 8 [51 thru 152,204]
- 2,3,4 [51,76,102]

(Specify size/type) **OUTLET**

- \_\_\_\_\_ IC Inside Caulk
- \_\_\_\_\_ IP Threaded
- \_\_\_\_\_ NH No-Hub
- \_\_\_\_\_ NL Neo-Loc

**E BODY HT. DIM.**

- 5 1/4 [133]
- 3 3/4 [95]
- 5 1/4 [133]
- 4 5/8 [117]

**PREFIXES**

- \_\_\_\_\_ **Z** Galvanized Body with Type 304 Stainless Steel Top

**SUFFIXES**

- \_\_\_\_\_ **-HD** 6 3/4 [171] High Aluminum Dome (148 Sq. In. [955 cm<sup>2</sup>] Open Area)
- \_\_\_\_\_ **-TC** Neo-Loc Test Cap Gasket
- \_\_\_\_\_ **-VP** Vandal Proof Secured Top
- \_\_\_\_\_ **-XJ** Vertical Expansion Joint (See Z190)

REV.	DATE: 05/25/07	C.N. NO. 96662
DWG. NO. P-15424 PRODUCT NO. Z100-174		

\*REGULARLY FURNISHED UNLESS OTHERWISE SPECIFIED