

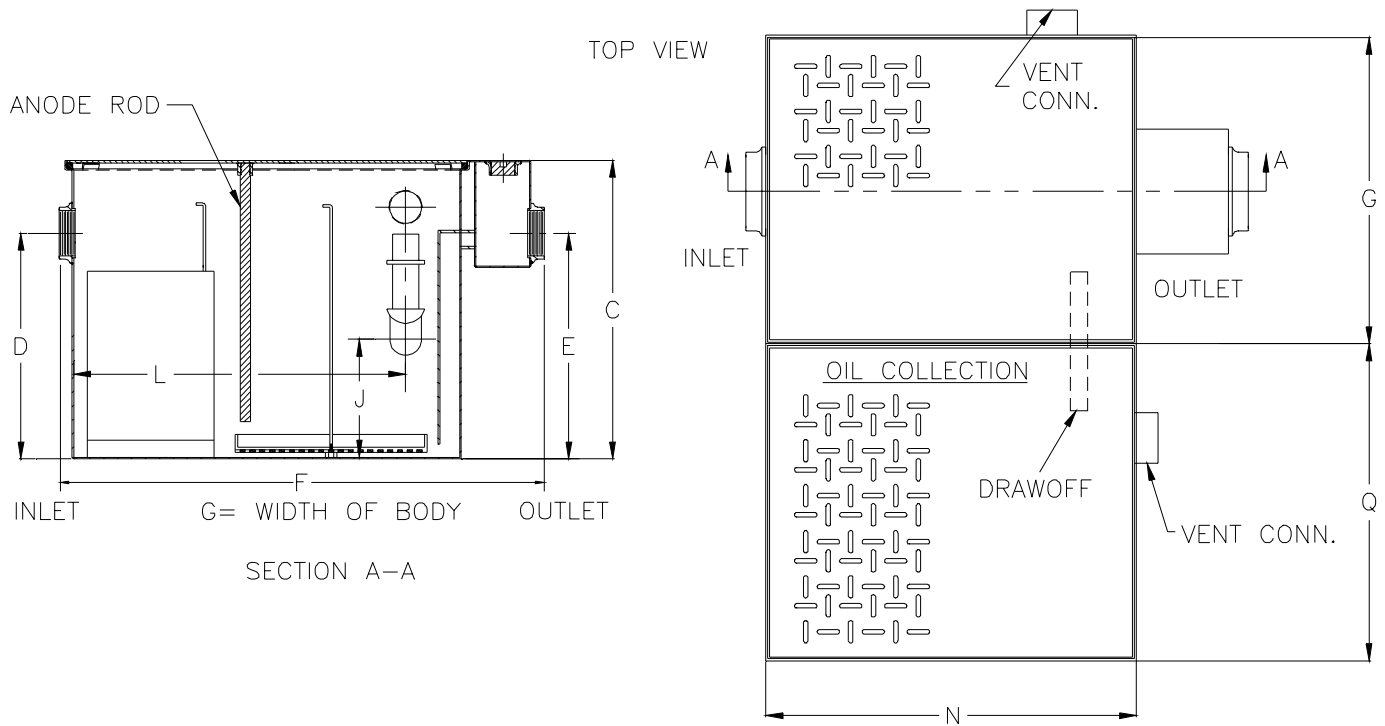


Z1188-108 LARGE CAPACITY OIL INTERCEPTOR W/ ANODE ROD

SPECIFICATION SHEET

TAG _____

Dimensional Data (inches or [mm]) are Subject to Manufacturing Tolerances and Change Without Notice



R = DEPTH OF STORAGE TANK
G = WIDTH OF BODY

Flow Rate GPM[L]Min	Inlet/Outlet Size**	Water Capacity Gal. [L]	Approx. Wt. Lbs. [Kg]	No. of Covers				
				Trap	Tank			
75[284]	3[75]	65[181]	485[220]	1	1			
Dimensions In Inches								
C	D/E	F	G	J	L	N	Q	R
22 3/4 [578]	18 1/2 [470]	36 [914]	28 5/8 [727]	8 [203]	25 3/4 [654]	26 [660]	28 5/8 [727]	41 [1041]

ENGINEERING SPECIFICATION: ZURN Z1188-108 Large capacity Acid Resistant Coated interior and exterior fabricated steel oil interceptor, with bronze cleanout plug and visible double wall trap seal, removable combination pressure equalizing/flow diffusing baffle and sediment bucket, horizontal baffle, adjustable oil drawoff and vent connections, anode rod, secured gasketed non-skid covers complete with flow control fitting and integral storage tank. Regularly furnished with inlet and outlet in high position.

OPTIONS (Check/specify appropriate options)

PREFIXES

_____ **Z** Acid Resistant Coated Fabricated Steel*

SUFFIXES

- _____ **-E** Acid Resistant Coated interior and exterior fabricated steel extension section. (Specify 'C' Dim. required) for recessed installation.
- _____ **-HD** Heavy duty traffic cover rated at 10,000 lbs [4536] kg. maximum safe live load.
- _____ **-K** Anchor flange 1 3/4 [44] down from top and 2 [51] wide. No extension required to accommodate -K
- _____ **-KC** Anchor flange 1 3/4 [44] down from top and 2 [51] wide with clamp collar.

*REGULARLY FURNISHED UNLESS OTHERWISE SPECIFIED

REV. B	DATE: 02/16/05	C.N. NO. 92965
DWG. NO. P-14706 PRODUCT NO. Z1188-108		