



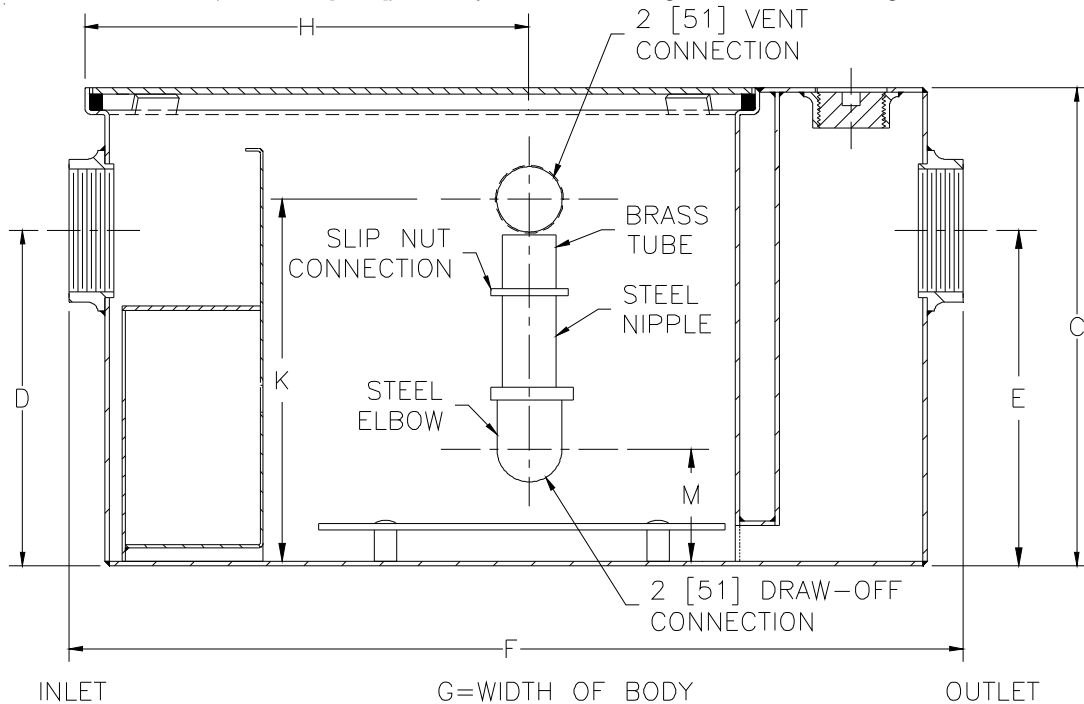
# Z1186-139

SIZE 700 OIL INTERCEPTOR W/6 [152] INLET, OUTLET

SPECIFICATION SHEET

TAG \_\_\_\_\_

Dimensional Data (inches and [ mm ]) are Subject to Manufacturing Tolerances and Change Without Notice



| Size | Inlet/Outlet Size | Flow Rate GPM [LPM] | Water Cap. Gal. [L] | Approx. Wt. Lbs. [kg] | Dimensions In Inches [mm] |              |              |              |              |              |               |
|------|-------------------|---------------------|---------------------|-----------------------|---------------------------|--------------|--------------|--------------|--------------|--------------|---------------|
|      |                   |                     |                     |                       | C                         | D/E          | F            | G            | H            | K            | M             |
| 700  | 6 [152]           | 35 [132]            | 21 [79]             | 140 [64]              | 19-3/4 [502]              | 12-1/2 [318] | 32-1/4 [819] | 19-7/8 [505] | 16-3/8 [416] | 16-3/4 [425] | 4-11/16 [119] |

**ENGINEERING SPECIFICATION: ZURN Z1186-139**

Size 700 Acid Resistant Coated interior and exterior fabricated steel oil interceptor, bronze cleanout plug and visible double wall trap seal, removable combination pressure equalizing/flow diffusing baffle and sediment bucket, horizontal baffle, adjustable oil draw-off and vent connections either side, secured gasketed non-skid cover, complete with flow control fitting. Regularly furnished with 6" [152mm] inlet and outlet in high position.

Note: Location of outlet from bottom of interceptor cannot be changed.

**OPTIONS** (Check/specify appropriate options)

**PREFIXES**

\_\_\_ Z Acid Resistant Coated Fabricated Steel\*

**SUFFIXES**

- \_\_\_ -E Acid Resistant Coated Interior and exterior fabricated steel extension section. (Specify 'C' Dim. required) for recessed installation.
- \_\_\_ -HD Heavy duty traffic cover rated at 10,000 lbs. [4536] Kg. maximum safe live load. A 3 [76] minimum extension height is required when heavy-duty cover (-HD) option is specified. (Specify 'C' Dim. height required.)
- \_\_\_ -K Anchor flange 1-3/4 [44] down from top and 2 [51] wide. A 3 [76] minimum extension height is required when anchor flange (-K) option is specified. (Specify 'C' Dim. height required.)
- \_\_\_ -KC Anchor flange 1-3/4 [44] down from top and 2 [51] wide with clamp collar.

\* Regularly furnished unless otherwise specified.