



# Z1201-ND4-RYK17

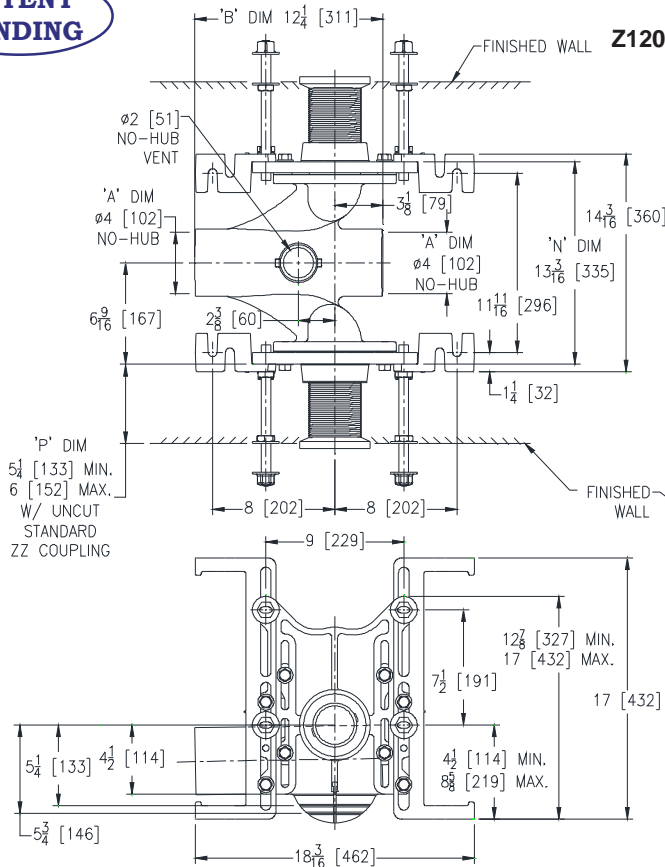
BACK-TO-BACK 17 [432] ONE PIECE RYK FOOT SUPPORT  
EZCARRY® ADJUSTABLE HORIZONTAL HIGH PERFORMANCE  
SIPHON JET NO-HUB WATER CLOSET CARRIER SYSTEM

SPECIFICATION SHEET

TAG \_\_\_\_\_

**PATENT  
PENDING**

Dimensional Data (inches and [mm]) are Subject to Manufacturing Tolerances and Change Without Notice



**Z1201-ND4-RYK17 Illustrated**

Product Number	Approx. Wt. lbs [kg]
Z1201-ND4-RYK17	105 [48]

**Note:**

1. Cut ZZ Coupling, Min. 'P' Dim. Obtainable = 2 [51]  
Cut ZQ Coupling, Min. 'P' Dim. Obtainable = 5 [127]
2. Feet bolted to floor using min. 1/2 [13] dia. anchors.
3. Rear anchor assembly required for secure installation.

## ENGINEERING SPECIFICATION: ZURN Z1201-ND4-RYK17

EZCarry® horizontal siphon jet water closet carrier system with high performance waterway and 4" [102 mm] no-hub connections. System includes Dura-Coated cast iron double main fitting with hydro-mechanically optimized sweep and extended 2" [51 mm] vent, adjustable gasketed faceplates, floor mounted 17" [432 mm] one piece RYK foot supports, fixture bolts, trim, stud protectors, bonded "Neo-Seal" gaskets, and corrosion resistant, adjustable 3" [76 mm] dia. X 6" [152 mm] couplings with integral test caps designed to increase flow velocity and line carry. EZCarry® system complies with the requirements of ASME A112.6.1M up to a 500 lb [227 kg] static load rating.

### OPTIONS (Check/specify appropriate options)

Z1201-ND4-RYK17 4 [102] No-Hub Back-to-Back Inlet (Double)

### PREFIXES

- \_\_\_ Z D.C.C.I. System with Zurn ZZ Adjustable Coupling\*  
\_\_\_ ZQ D.C.C.I. System with NPT Faceplate, Non-Adjustable Coupling

### SUFFIXES

- \_\_\_ -A Auxiliary Support Assembly  
(For 'P' Dim. Greater than 18 [457])  
\_\_\_ -CC Corrosion Resistant Cast Iron Coupling  
(2-1/4 [57] to 12 [305])  
\_\_\_ -CE EZ-Set™ Coupling (Available 6 [152], 12 [305] or  
longer when specified. Minimum length=5 [127])  
\_\_\_ -CL Custom Length Standard Coupling with Integral Test Cap  
(Specify Length 4, 8, 10, 12 [102, 203, 254, 305])  
\_\_\_ -CS 2-1/4 [57] Polymer Coupling with Integral Test Cap  
\_\_\_ -F Floor Mounted, Back Outlet Fixture Support  
\_\_\_ -G Galvanized Cast Iron  
\_\_\_ -M Auxiliary Foot Support  
(for 'P' Dim. 10 thru 18 [254 thru 457])  
\_\_\_ -VP Vandal-Proof Trim  
\_\_\_ -45 Finishing Frame for Siphon Jet System  
\_\_\_ -50 Flush Valve Supply Support for Water Closets

\* Regularly furnished unless otherwise specified.

Zurn Industries, LLC | Specification Drainage Operation  
1801 Pittsburgh Avenue, Erie, PA U.S.A. 16502 · Ph. 855-663-9876, Fax 814-454-7929  
In Canada | Zurn Industries Limited  
3544 Nashua Drive, Mississauga, Ontario L4V 1L2 · Ph. 905-405-8272, Fax 905-405-1292  
[www.zurn.com](http://www.zurn.com)

Rev. B  
Date: 11/17/16  
C.N. No. 135542  
Prod. | Dwg. No. Z1201-ND4-RYK17