

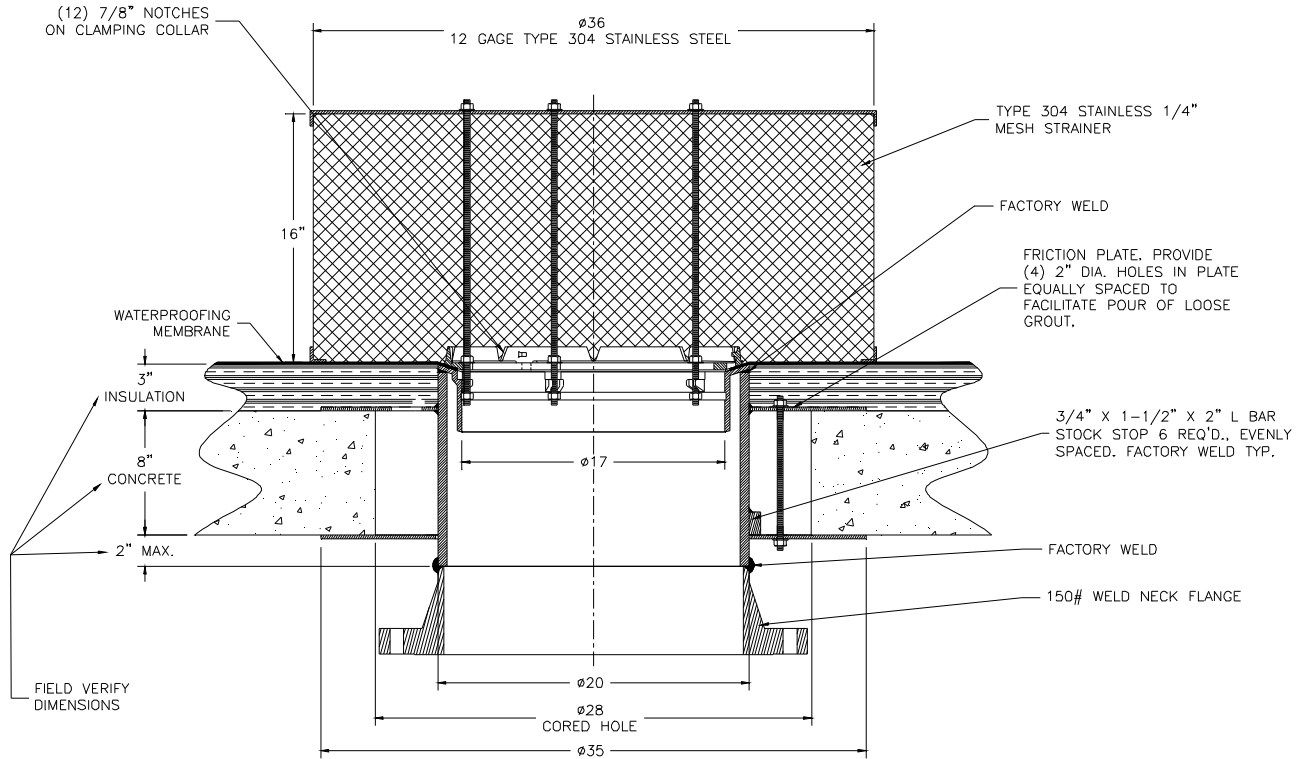


**Z-101-78**  
**MAIN ROOF DRAIN**  
**FABRICATED STAINLESS STEEL DOME**

SPECIFICATION SHEET

TAG \_\_\_\_\_

Dimensional Data (inches and [mm]) are Subject to Manufacturing Tolerances and Change Without Notice



**ENGINEERING SPECIFICATION:** ZURN Z-101-78 20 [508] Diameter Super-Flow roof drain. Acid Resistant Coated steel body with cast iron combination membrane flashing clamp/gravel guard and 304 stainless steel mesh strainer.

<b>PIPE SIZE</b>	(Specify size/type) <b>OUTLET</b>	<b>E BODY HT. DIM.</b>
8, 10, 12 [203, 254, 305]	_____ NH No-Hub	7 5/16 [185]

**SUFFIXES**

- \_\_\_\_\_ -C Underdeck Clamp
- \_\_\_\_\_ -E Static Extension 2 [51] thru 4 [102] (Specify Height)
- \_\_\_\_\_ -G Galvanized Cast Iron
- \_\_\_\_\_ -R Roof Sump Receiver
- \_\_\_\_\_ -W2 2 [51] Internal Water Dam
- \_\_\_\_\_ -W3 3 [76] Internal Water Dam
- \_\_\_\_\_ -W4 4 [102] Internal Water Dam
- \_\_\_\_\_ -89 2 [51] High External Water Dam

<b>REV.</b>	<b>DATE: 10/3/02</b>	<b>C.N. NO. 89967</b>
<b>DWG. NO. P-14885 PRODUCT NO. Z-101-78</b>		

\*REGULARLY FURNISHED UNLESS OTHERWISE SPECIFIED