



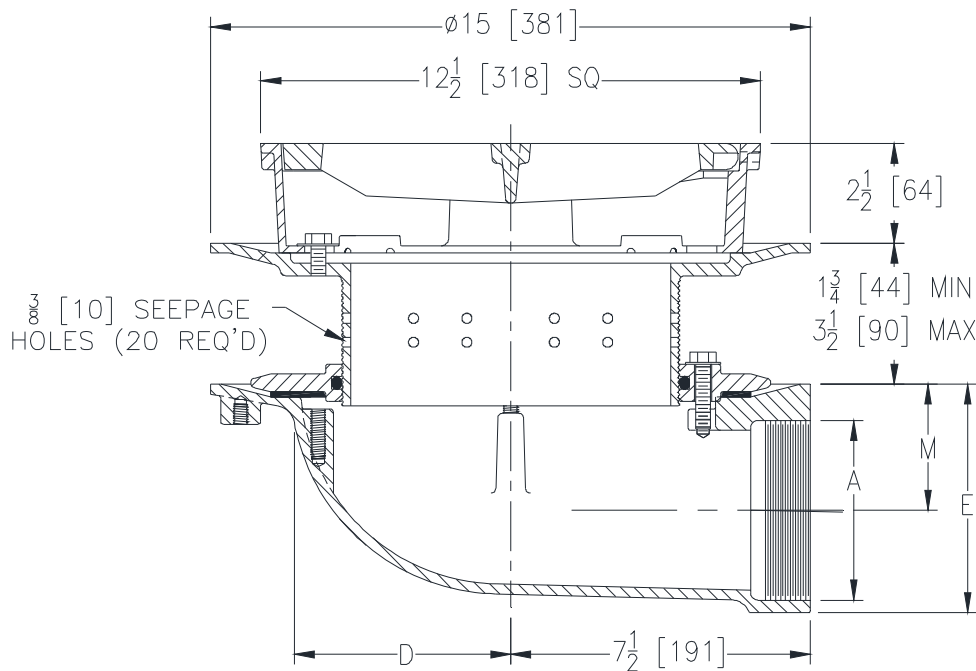
Z610-133

12 [305] HEAVY-DUTY DRAIN WITH ADJUSTABLE
EXTENSION WITH SEEPAGE HOLES, & SIDE OUTLET

SPECIFICATION SHEET

TAG _____

Dimensional Data (inches and [mm]) are Subject to Manufacturing Tolerances and Change Without Notice



ENGINEERING SPECIFICATION: ZURN Z610-133

12" [305mm] Square top heavy-duty drain. Dura-Coated cast iron body with side outlet, seepage pan and combination membrane flashing clamp, adjustable extension with seepage holes, secondary clamping collar with o-ring and heavy-duty cast iron loose slotted grate.

Dimension In Inches [mm]			Approx. Wt. Lbs. [kg]	Grate Open Area Sq. In [cm ²]
A Pipe Size	D	M		
2 [51]	5-7/16 [138]	4-1/4 [108]	68 [31]	42 [271]
3 [76]	5-7/16 [138]	3-11/16 [94]	67 [30]	
4 [102]	5-7/16 [138]	3-3/16 [81]	66 [30]	
5 [127]	5-1/2 [140]	4-13/16 [122]	78 [35]	
6 [152]	5-1/2 [140]	4-1/4 [108]	77 [35]	

OPTIONS (Check/specify appropriate options)

PIPE SIZE

2, 3, 4 [51 thru 102]
5, 6 [127, 152]

(Specify size) **OUTLET**

_____ IP Threaded
_____ IP Threaded

E BODY HT. DIM.

5 3/4 [146]
7 7/8 [200]

PREFIXES

- _____ Z D.C.C.I. Body and Grate*
- _____ ZB D.C.C.I. Body with Polished Bronze Top (Add 3/16 [5] to 2 1/2 [63] Dim. and 3/4 [19] to 12 1/2 [317] Dim.)
- _____ ZN D.C.C.I. Body with Polished Nickel Bronze Top (Add 3/16 [5] to 2-1/2 [63] Dim. and 3/4 [19] to 12-1/2 [317] Dim.)

SUFFIXES

- _____ -AR Acid Resistant Epoxy Coated Cast Iron
- _____ -DG Duresist Grate
- _____ -DS Ductile Iron Solid Cover
- _____ -DX Dex-o-tex Flange (ZB, ZN Only)
- _____ -F 2 [51] High Extension
- _____ -G Galvanized Cast Iron
- _____ -H Hinged Grate
- _____ -HC Hinged Solid Cover
- _____ -HL Hinged Locking Grate
- _____ -HLC Hinged Locking Cover
- _____ -LY (Less) Sediment Bucket
- _____ -P Trap Primer Connection
- _____ -SC Solid Cover
- _____ -SS Stainless Steel Mesh Liner for Bucket
- _____ -TS Top Secured with Slotted Screws
- _____ -VP Vandal-Proof Secured Top
- _____ -YA Aluminum Sediment Bucket
- _____ -YC Cast Iron Sediment Bucket

* Regularly furnished unless otherwise specified.