



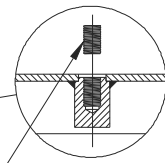
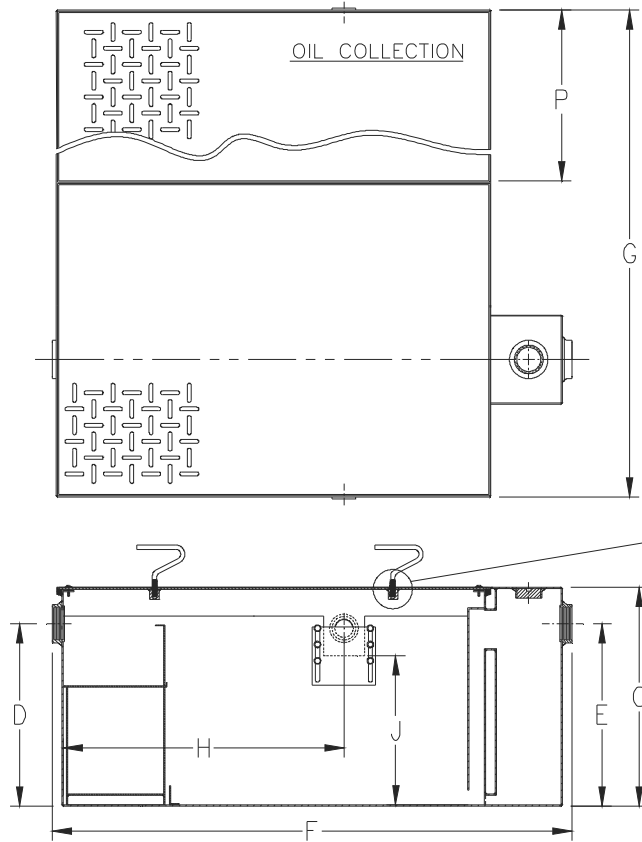
# Z1188-ST-95

SIZE 75 LARGE CAPACITY HEAVY-DUTY OIL INTERCEPTOR W/ 168 GALLON INTEGRAL STORAGE TANK

SPECIFICATION SHEET

TAG \_\_\_\_\_

Dimensional Data (inches and [ mm ]) are Subject to Manufacturing Tolerances and Change Without Notice



HEX HEAD SET SCREW— REMOVE SCREWS TO USE LIFT HANDLES, REPLACE SCREWS ONCE COVER IS IN PLACE AND HANDLES ARE REMOVED.

Flow Rate GPM [LPM]	Oil Storage Tank Cap. Gal. [L]	No. of Covers		P
		Trap	Tank	
75 [284]	168 [636]	1	1	49-13/16 [186]

Flow Rate GPM [LPM]	Inlet/ Outlet Size	Water Capacity Gal. [L]	Approx. Wt. Lbs. [kg]	Dimensions in Inches [mm]					
				C	D/E	F	G	H	J
75 [284]	4 [102]	88 [333]	934 [424]	25-3/4 [654]	19 [483]	51-3/8 [1305]	78 [1981]	29-1/4 [743]	15-1/2 [394]

**ENGINEERING SPECIFICATION: ZURN Z1188-ST-95**

Acid Resistant Coated interior and exterior Heavy-Duty fabricated steel oil interceptor, with bronze cleanout plug and visible double wall trap seal, removable combination pressure equalizing/flow diffusing baffle and sediment bucket, adjustable oil draw-off, vent connections, secured gasketed non-skid reinforced cover, complete with flow control fitting and left hand integral storage tank. Regularly furnished with inlet and outlet in high position. Note: location of outlet from bottom of interceptor cannot be changed.

**OPTIONS** (Check/specify appropriate options)

**PREFIXES**

\_\_\_ Z Acid Resistant Coated Fabricated Steel\*

**SUFFIXES**

- \_\_\_ -E Integral Acid Resistant Coated interior and exterior fabricated steel extension section. (Specify 'C' Dim. required) for recessed installation.
- \_\_\_ -K Anchor flange 1-3/4 [44] down from top and 2 [51] wide. A 3 [76] minimum extension height is required when anchor flange (-K) option is specified. (Specify 'C' Dim. height required.)
- \_\_\_ -KC Anchor flange 1-3/4 [44] down from top and 2 [51] wide with clamp collar. A 3 [76] minimum extension height is required when anchor flange (-KC) option is specified. (Specify 'C' Dim. height required.)
- \_\_\_ -STR Storage tank on right hand side when facing the inlet.

\* Regularly furnished unless otherwise specified.