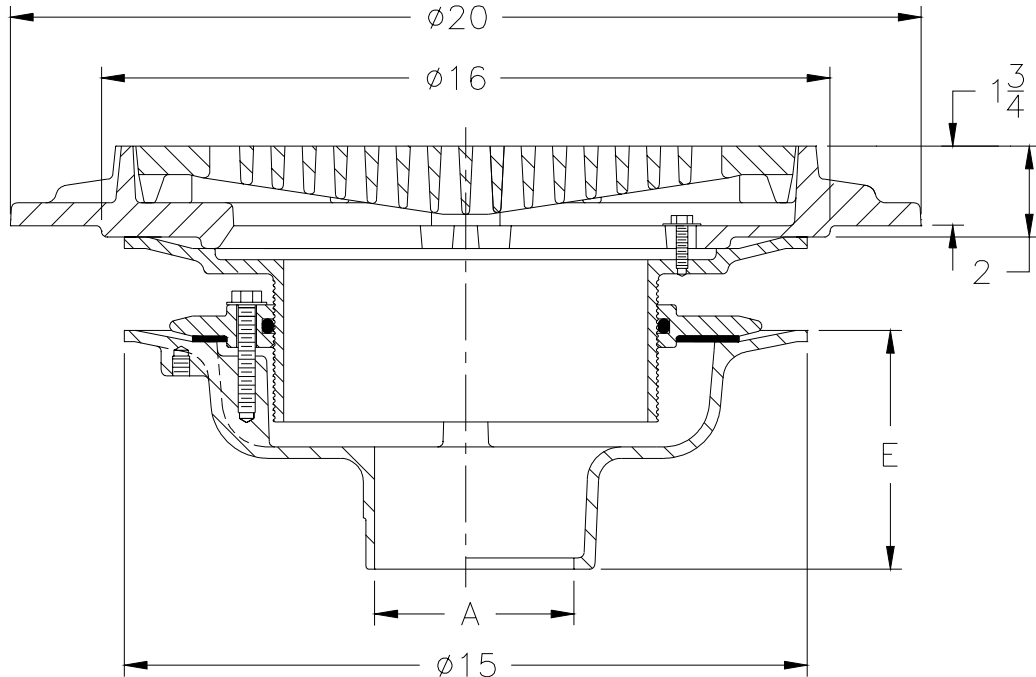




Z-534-86
15" DIAMETER PARKING DECK
DRAIN WITH SUPPORT FLANGE

TAG _____

Dimensional Data (inches and [mm]) are Subject to Manufacturing Tolerances and Change Without Notice



A- Pipe Size In.	Approx. Wt. Lbs.	Grate Open Area Sq. In.
2-3-4-5-6	95	56
8-10	97	

ENGINEERING SPECIFICATION: ZURN Z-534-86

15" Diameter Parking Deck Drain, Dura-Coated cast iron body with bottom outlet, seepage pan and combination membrane flashing clamp, adjustable extension, secondary clamping collar with o-ring and heavy duty support flange, with heavy duty slotted grate.

OPTIONS (Check/specify appropriate options)

OUTLET (Specify type)

- _____ **IC** Inside Caulk
- _____ **IG** Inside Caulk w/Sealtrol Gskt.
- _____ **IP** Threaded
- _____ **NH** No-Hub
- _____ **NL** Neo-Loc
- _____ **NL** Neo-Loc

PIPE SIZE (Specify size)

- _____ 2" thru 6", 8", 10"
- _____ 2" thru 6"
- _____ 2" thru 6", 8", 10"
- _____ 2" thru 6", 8", 10"
- _____ 2" thru 4"
- _____ 5", 6"

'E' BODY HT. DIMENSION

- _____ 5-1/4"
- _____ 5-1/4"
- _____ 3-3/4"
- _____ 5-1/4"
- _____ 4-5/8"
- _____ 5-1/2"

PREFIXES

- _____ **Z-** D.C.C.I. Body and Grate*
- _____ **ZB-** D.C.C.I. Body with Polished Bronze Top (Add 3/16" to 2" Dim.)
- _____ **ZN-** D.C.C.I. Body with Polished Nickel Bronze Top (Add 3/16" to 2" Dim.)

SUFFIXES

- _____ **-C** Underdeck Clamp
- _____ **-E** Static Extension 1" thru 4" (Specify Height)
- _____ **-G** Galvanized Cast Iron
- _____ **-S** Secondary Clamp Collar
- _____ **-85** Stainless Steel Perforated Extension
- _____ **-90** 90° Threaded Side Outlet Body (See Z-1042)
- _____ **-VP** Vandal Proof Secured Top
- _____ **-XJ** Vertical Expansion Joint (See Z-190) (Use with IP Type Outlets)

REV. A	DATE: 6/11/01	C.N. NO. 87687
DWG. NO. P-13815 PRODUCT NO. Z-534-86		

*REGULARLY FURNISHED UNLESS OTHERWISE SPECIFIED