



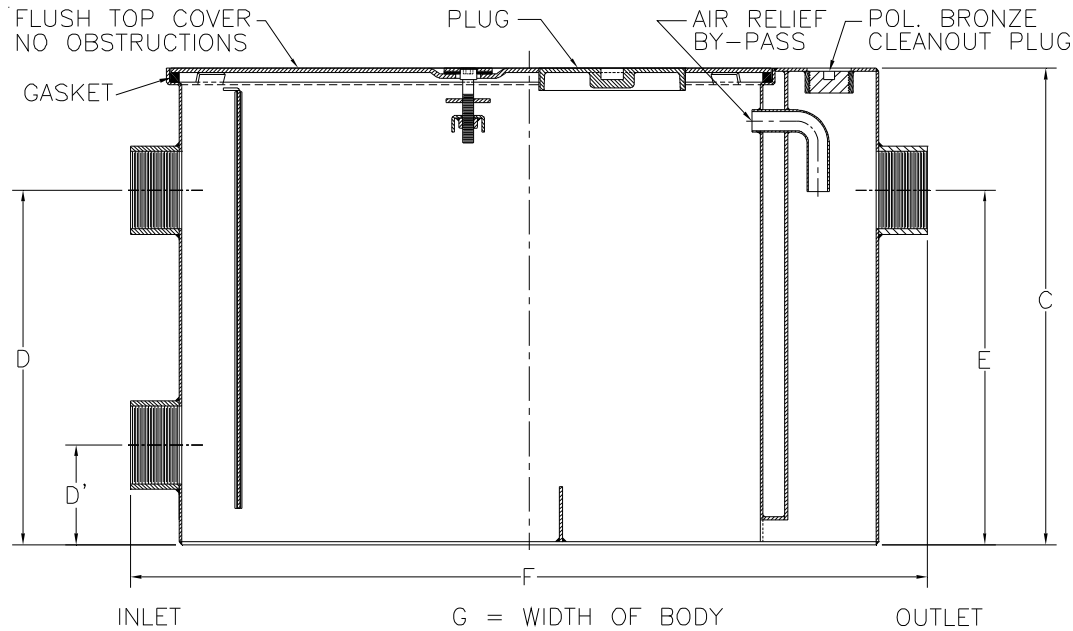
Z1170-128

GREASE INTERCEPTOR W/ PLUG IN COVER

SPECIFICATION SHEET

TAG _____

Dimensional Data (inches and [mm]) are Subject to Manufacturing Tolerances and Change Without Notice



Size	Inlet/ Outlet Size**	Flow Rate G.P.M. [L]	Capacity		Approx. Wt. Lbs. [kg]	Dimensions in Inches				
			Water Gal. [L]	Grease Lbs. [kg]		C	D/E	D'	F	G
800	3 [76]	50 [189]	40 [151]	100 [45]	180 [82]	21 1/2 [546]	16 [406]	4 1/2 [114]	36 [914]	24 1/2 [622]

ENGINEERING SPECIFICATION: ZURN Z1170-128

Acid Resistant Coated interior and exterior fabricated steel grease interceptor, PDI, rated at ____ GPM and ____ Lbs. grease capacity, with internal air relief by-pass, bronze cleanout plug and visible double wall trap seal with removable combination pressure equalizing/flow diffusing baffle and sediment tray. Gasketed non-skid secured cover w/ 6 [152] cleanout plug complete with Z1108 flow control fitting. Regularly furnished with a dual high/low inlet and outlet connection. Note: Location of outlet from bottom of interceptor cannot be changed.

PREFIXES

____ Z Acid Resistant Coated Fabricated Steel*

SUFFIXES

- ____ -E Acid Resistant Coated Interior and exterior fabricated steel extension section. (Specify 'C' Dim. required) for recessed installation.
- ____ -K Anchor flange 1 3/4 [44] down from top and 2 [51] wide. A 3 [76] minimum extension height is required when anchor flange (-K) option is specified. (Specify 'C' Dim. height required.)
- ____ -KC Anchor flange 1 3/4 [44] down from top and 2 [51] wide with clamp collar. A 3 [76] minimum extension height is required when anchor flange (-K) option is specified.
- ____ -L Angle type (Z1108-L) flow control device.
- ____ -R Recessing receiver for recessed installation is equipped with adjustable support brackets and gasketed non-skid cover with covered recessed lift handle.
- ____ -RE Recessing receiver enclosed type for recessed installation. Furnished with adjustable support brackets and gasketed non-skid secured cover with covered recessed lift handle.
- ____ -T Cover recessed for tile/terrazzo. A 3 [76] minimum extension height is required. (Specify 'C' Dim. and required recess depth - 1/8 [3], 3/4 [19], or 1 1/4 [32]).

** Inlet and outlet sizes shown indicate standard operating sizes and flow control setting. Size #800 will have 4 [102] reduced to 3 [76] as standard. If changed, flow control must be adjusted accordingly.

REV.	DATE: 05/12/08	C.N. NO. 98493
DWG. NO. P-15547	PRODUCT NO. Z1170-128	

*REGULARLY FURNISHED UNLESS OTHERWISE SPECIFIED