



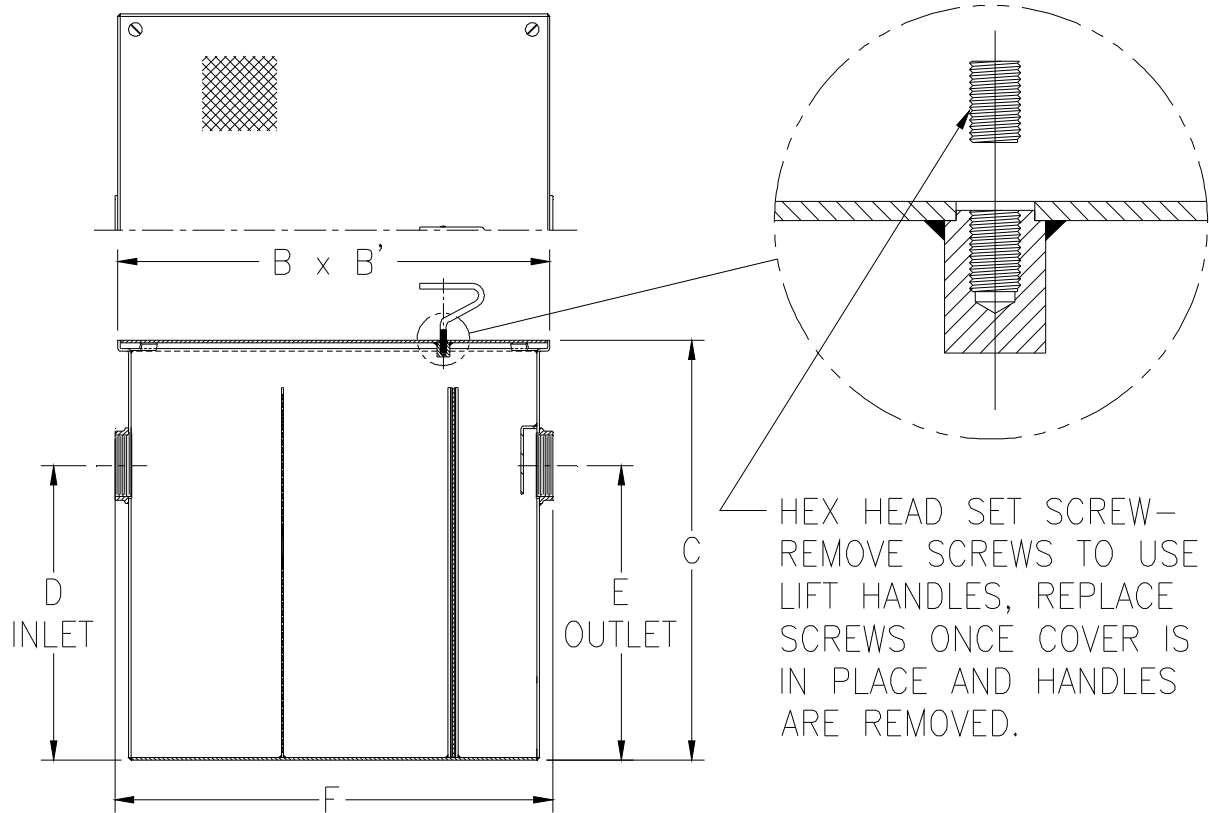
Z1185-146

LINT INTERCEPTOR WITH INLINE INLET & OUTLET 12 [305] FROM TOP

SPECIFICATION SHEET

TAG _____

Dimensional Data (inches and [mm]) are Subject to Manufacturing Tolerances and Change Without Notice



Size No. of Machines	Inlet/Outlet Size In. [mm]	Flow Rate G.P.M. [L.P.M.]	Approx. Wt. Lbs. [kg]	Dimensions in Inches [mm]					
				B	B'	C	D	E	F
20	4 [102]	200 [756]	404 [183]	40 [1016]	40 [1016]	35 [889]	23 [813]	23 [813]	41 [1041]

ENGINEERING SPECIFICATION: ZURN Z1185-146

Acid Resistant Coated interior and exterior fabricated steel lint interceptor, non-skid secured cover with removable lift handle, aluminum lint intercepting secondary screen assembly, and permanent primary straining baffle with 3/8" [10mm] diameter perforated holes. Furnished with inline inlet and outlet 12" [305mm] from the top.

OPTIONS (Check/specify appropriate options)

PREFIXES

- ___ Z Acid Resistant Coated Fabricated Steel*
- ___ ZS All Type 304 Fabricated Stainless Steel

SUFFIXES

- ___ -E Acid Resistant Coated interior and exterior fabricated steel extension section (Specify 'C' dimension required for recessed installation).
- ___ -RS Aluminum Screen Replacement Assembly

* Regularly furnished unless otherwise specified.