



Z886-HDG-SW2

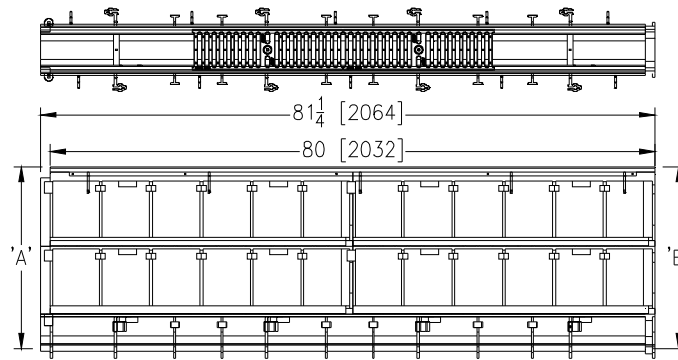
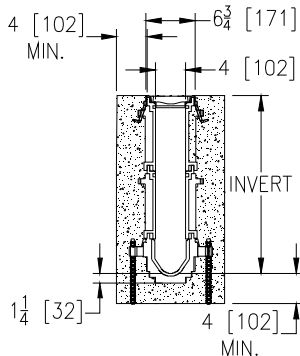
6-3/4 [171] WIDE REVEAL TRENCH DRAIN SYSTEM
WITH GALVANIZED HEAVY-DUTY FRAME AND
TWO 9 [229] SIDEWALL EXTENSIONS

SPECIFICATION SHEET

TAG _____

Dimensional Data (inches and [mm]) are Subject to Manufacturing Tolerances and Change Without Notice

SPECIFYING ENGINEER IS RESPONSIBLE FOR
CONCRETE ENCASEMENT AND REINFORCING
BASED UPON APPLICATION AND LOCAL CODES



NOTE: + Actual Channel length is 81 1/4 [2064] to allow for overlap.

ENGINEERING SPECIFICATION: Zurn Z886-HDG-SW2

Channels shall be 80 [2032] long, 6-3/4 [171] wide reveal and have a 4 [102] throat. Modular channel sections shall be made of 0% water absorbent High Density Polyethylene (HDPE). Shall have a positive mechanical connection between channel sections that will not separate during the installation and shall mechanically lock into the concrete surround every 10 [254]. Channels shall weigh less than 2.31 lbs. [1.05kg] per linear foot, have a smooth, 1-1/2 [38] radiused self cleaning bottom with a Manning's coefficient of 0.009 and 0.75% or neutral 0% built in slope. Channels shall have rebar clips standard to secure trench in its final location. Channels shall have HDPE SW Side Walls attached for an additional 18 [457] added to the standard channel invert for additional flow capability shown in chart below. Shall be provided with standard GDC grates that lock down to frame. Zurn 6 [152] wide reveal Galvanized Ductile Iron Slotted Grate conforming to ASTM specification A536-84, Grade 80-55-06. Ductile Iron grate is rated class C per the DIN EN1433 top load classifications. Supplied in 20 [508] nominal lengths with 1/2 [13] wide slots, and 3/4 [19] bearing depth. Grate has an open area of 28.1 sq. in. per ft. [60,308 sq. mm per meter]. The 0.105 [2.66] thick Heavy-Duty Carbon Steel Galvanized Frame Assembly conforms to ASTM specification A36 and Galvanizing conforms to ASTM specification A123 with 10 - 4 [102] long concrete anchors per 80 [2032]. Grate lockdown bars are to be integral to the frame. All welds must be performed by a certified welder per ASTM standard AWS D1.1. Frames Shall be produced in the U.S.A.

PREFIX OPTIONS (Check/specify appropriate options)

___ Z Six-foot, Eight-inch High Density Polyethylene (HDPE)*

SUFFIX OPTIONS (Check/specify appropriate options)

Outlet Adapters Add/Each

___ -E1 Closed End Cap
___ -E2 2 [51] No-Hub End Outlet
___ -E3 3 [76] No-Hub End Outlet
___ -E4 4 [102] No-Hub End Outlet
___ -E6 6 [152] No-Hub End Outlet
___ -U2 2 [51] No-Hub Bottom Outlet
___ -U3 3 [76] No-Hub Bottom Outlet
___ -U4 4 [102] No-Hub Bottom Outlet
___ -U6 6 [152] No-Hub Bottom Outlet

Frame Options

___ -LD Light Duty Grates on Heavy Duty Frame

Grate Options (Load Classifications are per DIN EN1433)

___ -BDC Black Acid Resistant Epoxy Coated Ductile Grate - Class C
___ -BDE Black Acid Resistant Epoxy Coated Ductile Grate - Class E
___ -BG Galvanized Ductile Iron Bar Grate - Class C
___ -DBG Ductile Iron Cast Bar Grate - Class C
___ -DC Ductile Iron Solid Cover - Class C
___ -DGC Ductile Iron Slotted Grate - Class C
___ -DGE Ductile Iron Slotted Grate - Class E
___ -GDC Galvanized Ductile Slotted Grate - Class C*
___ -GDE Galvanized Ductile Slotted Grate - Class E
___ -GHPD Galvanized Heel-Proof Ductile Grate - Class B
___ -GHPDE Galvanized Heel-Proof Ductile Grate - Class E
___ -HPD Heel-Proof Ductile Slotted Grate - Class B
___ -HPDE Heel-Proof Ductile Slotted Grate - Class E
___ -RFGC Reinforced Slotted Galvanized Grate - Class C
___ -RPGC Reinforced Perforated Galvanized Grate - Class C
___ -RPGRC Reinforced Perforated Galvanized Reverse Punch Grate - Class C

Miscellaneous Options

___ -VP Vandal-Proof Lockdown
___ -JC Joint Connector

| Trench No. | 'A' Shallow Inv. | 'B' Deep Inv. | Flow | | |
|------------|------------------|---------------|-------|-------|-------|
| | | | (cfs) | (gpm) | (lps) |
| 8601SW2 | 21.50 [546] | 22.10 [561] | 2.33 | 1045 | 66 |
| 8602SW2 | 22.10 [561] | 22.70 [577] | 2.40 | 1078 | 68 |
| 8603SW2 | 22.70 [577] | 23.30 [592] | 2.47 | 1110 | 70 |
| 8603NSW2 | 23.30 [592] | 23.30 [592] | - | - | - |
| 8604SW2 | 23.30 [592] | 23.90 [607] | 2.55 | 1142 | 72 |
| 8605SW2 | 23.90 [607] | 24.50 [622] | 2.62 | 1175 | 74 |
| 8606SW2 | 24.50 [622] | 25.10 [638] | 2.69 | 1207 | 76 |
| 8606NSW2 | 25.10 [638] | 25.10 [638] | - | - | - |
| 8607SW2 | 25.10 [638] | 25.70 [653] | 2.76 | 1239 | 78 |
| 8608SW2 | 25.70 [653] | 26.30 [668] | 2.83 | 1272 | 80 |
| 8609SW2 | 26.30 [668] | 26.90 [683] | 2.91 | 1304 | 82 |
| 8610SW2 | 26.90 [683] | 27.50 [699] | 2.98 | 1336 | 84 |
| 8611SW2 | 27.50 [699] | 28.10 [714] | 3.05 | 1369 | 86 |
| 8612SW2 | 28.10 [714] | 28.70 [729] | 3.12 | 1401 | 88 |
| 8612NSW2 | 28.70 [729] | 28.70 [729] | - | - | - |
| 8613SW2 | 28.70 [729] | 29.30 [744] | 3.19 | 1433 | 90 |
| 8614SW2 | 29.30 [744] | 29.90 [759] | 3.27 | 1466 | 92 |
| 8615SW2 | 29.90 [759] | 30.50 [775] | 3.34 | 1498 | 94 |

MADE in the U.S.A. (Load Classifications are per DIN EN1433)

___ -BDE-USA Black Acid Resistant Epoxy Coated Ductile Grate - Class E
___ -DGC-USA Ductile Iron Slotted Grate - Class C (Substitute DGE-USA)
___ -DGE-USA Ductile Iron Slotted Grate - Class E
___ -GDC-USA Galvanized Ductile Slotted Grate - Class C
___ -GDE-USA Galvanized Ductile Slotted Grate - Class E
___ -GHPDE-USA Galvanized Heel-Proof Ductile Grate - Class E
___ -HPDE-USA Heel-Proof Ductile Slotted Grate - Class E
___ -PPC Plastic Perforated Grate - Class C

USA Miscellaneous Options

___ -DB Bottom Dome Strainer

REV. C DATE: 02/11/13 C.N. NO. 124315

DWG. NO. 302009 PRODUCT NO. Z886-HDG-SW2

*REGULARLY FURNISHED UNLESS OTHERWISE SPECIFIED

ZURN INDUSTRIES, LLC ♦ SPECIFICATION DRAINAGE OPERATION ♦ 1801 Pittsburgh Ave. ♦ Erie, PA 16514

Phone: 814455-0921 ♦ Fax: 814454-7929 ♦ World Wide Web: www.zurn.com

In Canada: ZURN INDUSTRIES LIMITED ♦ 3544 Nashua Drive ♦ Mississauga, Ontario L4V1L2 ♦ Phone: 905405-8272 Fax: 905405-1292