



# Z899-DX

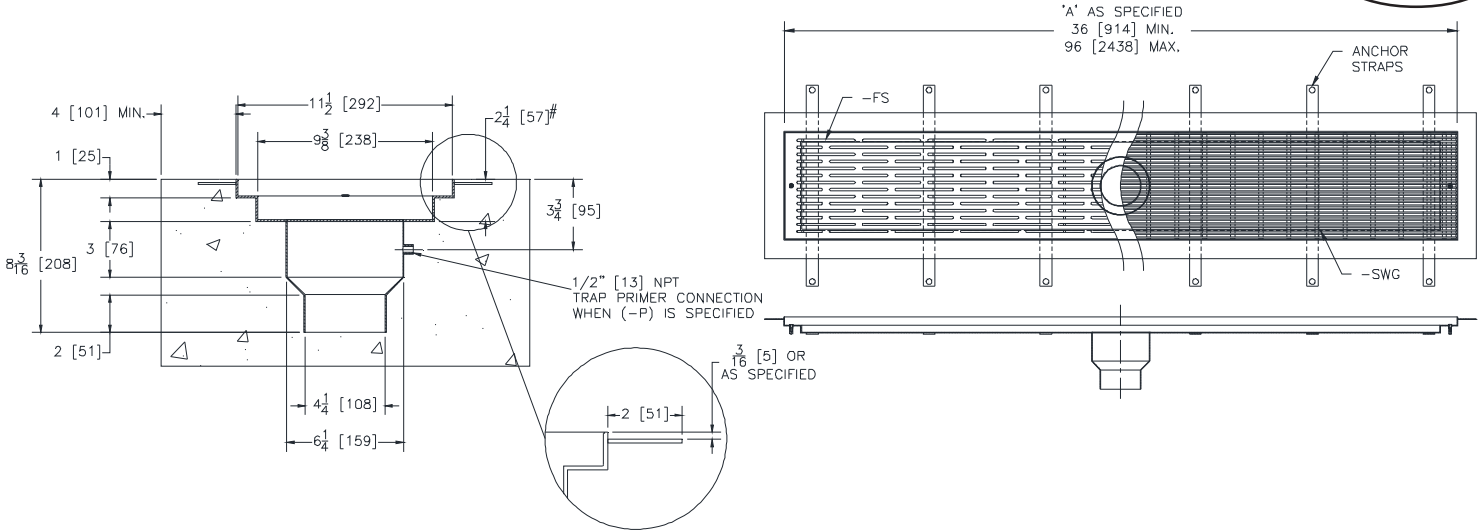
## ELEVATOR TRENCH DRAIN SYSTEM WITH CENTER OUTLET AND DEX-O-TEX FLANGE

SPECIFICATION SHEET

TAG \_\_\_\_\_

Dimensional Data (inches and [ mm ]) are Subject to Manufacturing Tolerances and Change Without Notice

**PAT. NO.  
D787028**



# 2-1/4 [57] for center outlet only. End Outlet (-EO) requires 3-1/4 [83] channel invert.

Specify Drain Length (‘A’ length to be specified by customer)	
A	

**ENGINEERING SPECIFICATION: ZURN Z899-DX**

Overall channel width shall be 11-1/2" [292mm] and have an 9-3/8" [238mm] throat. Channels are made of #12 ga. fabricated stainless steel conforming to ASTM A-240 (type 304) including anchoring straps, and will feature a black powder coating on interior and exterior surfaces. The outlet on each channel will be centered. Channel to be provided with custom -SWG stainless steel wire grate, conforming to ASTM A-240 (type 304), that locks down to the channel with vandal-proof flathead machine screws. This grate is rated for Class A per the DIN EN1433 top load classification, complies with both ADA and Heel-Proof requirements, and has an open area of 64.9 sq. in/ft. [1373.7 sq. cm/m]. Optional -FS fabricated slotted grate has an open area of 35.91 sq. in/ft [760.1 sq. cm/m] and also complies with ADA and Heel-Proof requirements. This system has been designed to comply with SFFC Code, Section 511.1 for a 100 GPM flow rate complete with Dex-O-Tex flange. (Replaces Z895-94)

Note: Minimum Dimensional requirements must be met to satisfy 100 GPM flow rate specification.

**Prefix Options (Check/specify appropriate options)**

\_\_\_ Z Type 304 Stainless Steel with Black Powder Coating\*

**Grate Options**

\_\_\_ -FS Fabricated Stainless Steel Slotted Grate (open area = 35.9 sq-in / linear foot)  
 \_\_\_ -SWG Stainless Wire Grate\* (open area = 64.9 sq-in / linear foot)\*

**Suffix Options (Check/specify appropriate options)**

\_\_\_ -4NH 6 [152] to 4 [102] Custom Tapered No-Hub Bottom Outlet\*  
 \_\_\_ -6NH 6 [152] No-Hub Bottom Outlet

**Miscellaneous Options**

\_\_\_ -EO End Outlet  
 \_\_\_ -P 1/2 [13] Trap Primer Connection  
 \_\_\_ -LAS Less Anchor Straps

\* Regularly furnished unless otherwise specified.