



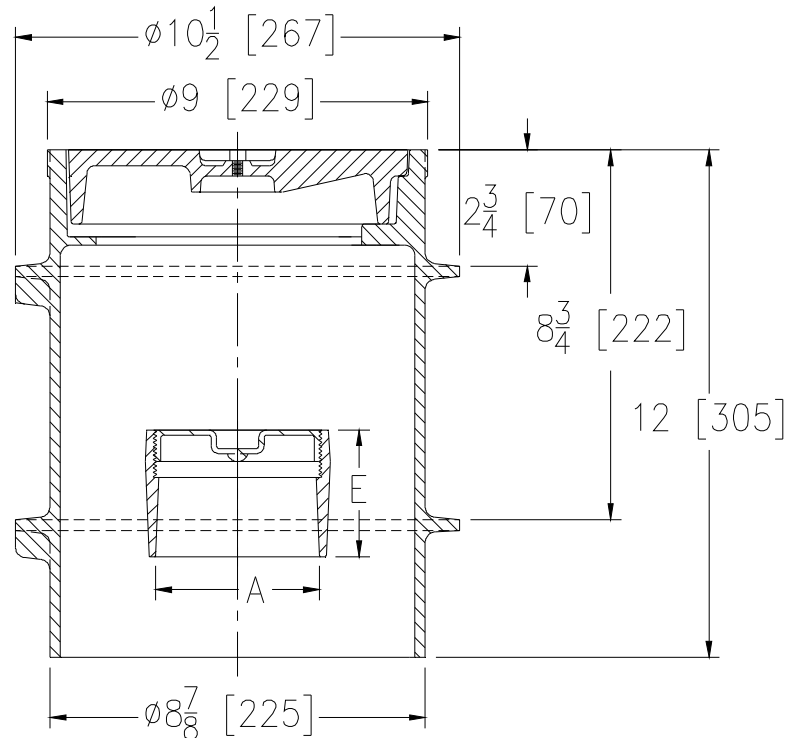
Z1474-N

HEAVY DUTY CLEANOUT HOUSING W/Z1440
INTERNAL CLEANOUT

SPECIFICATION SHEET

TAG _____

Dimensional Data (inches and [mm]) are Subject to Manufacturing Tolerances and Change Without Notice



Dimensions In Inches [mm]		Approx. Wt. Lbs. [kg]
A-Pipe Size	E	
4 [102]	3 [76]	45 [20]
6 [152]	3 [76]	48 [22]

ENGINEERING SPECIFICATION: ZURNZ1474-N

Heavy duty cleanout housing. Dura-Coated cast iron body with integral anchor flange, secured scoriated cover with lifting device with internal Z1440 cleanout.

OPTIONS (Check/specify appropriate options)

PREFIXES

- ___ Z Dura-Coated Cast Iron*
- ___ ZN D.C.C.I. with Polished Nickel Bronze Cover (Add 3/16 [5] to 2-3/4 [70] Dim. & 3/4 [19] to 9 [229] Dim.)

SUFFIXES

- ___ -BP Bronze Plug (Cleanout only)
- ___ -DC Duresist Cover (Housing only)
- ___ -G Galvanized Cast Iron
- ___ -SG Solid Gasketed Cover (Housing only)
- ___ -VP Vandal-Proof Screw (Housing only)

* Regularly furnished unless otherwise specified.