



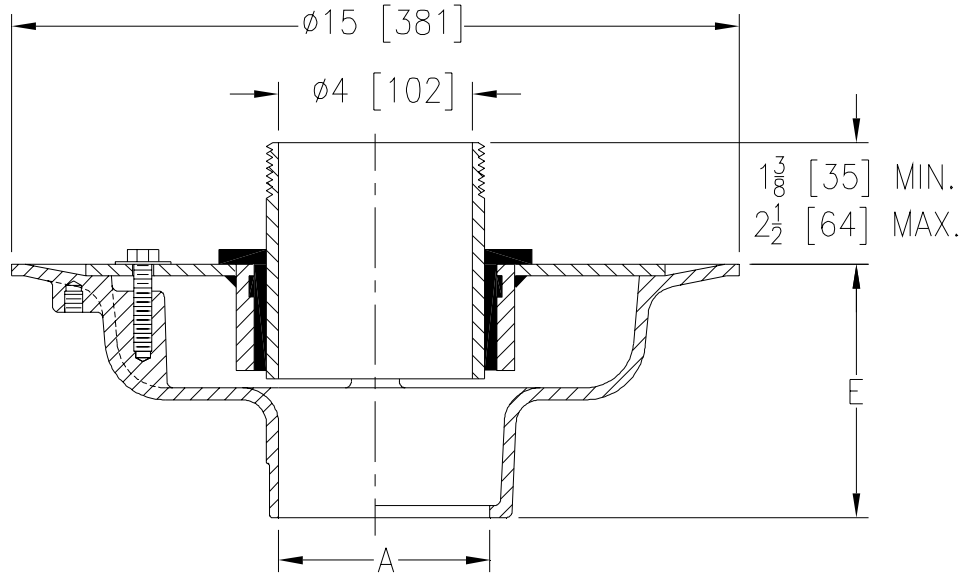
Z625-86

ISOLATION DECK DRAIN BODY W/ ADJUSTABLE NIPPLE

SPECIFICATION SHEET

TAG _____

Dimensional Data (inches and [mm]) are Subject to Manufacturing Tolerances and Change Without Notice



Dimensions in Inches	Approx. Wt. Lbs. [kg]
A Pipe Size	
2 thru 6 [51 thru 152]	25 [11]

ENGINEERING SPECIFICATION: ZURN Z625-86

Isolation deck drain, Dura-Coated cast iron body, clamp collar, neoprene flex gasket and adjustable nipple.

OPTIONS (Check/specify appropriate options)

PIPE SIZE

- 2 thru 6 [51 thru 152]
- 2 thru 4, 6 [51 thru 102, 152]
- 2 thru 6 [51 thru 152]
- 2 thru 6 [51 thru 152]
- 2 thru 4 [51 thru 102]

(Specify size/type) **OUTLET**

- ___ IC Inside Caulk
- ___ IG Inside Caulk w/Sealtrol Gskt.
- ___ IP Threaded
- ___ NH No-Hub
- ___ NL Neo-Loc

'E' BODY HT. DIM.

- 5 1/4 [133]
- 5 1/4 [133]
- 3 3/4 [95]
- 5 1/4 [133]
- 4 5/8 [117]

PREFIXES

- ___ Z D.C.C.I Body*

SUFFIXES

- ___ -85 Stainless Steel Perforated Extension

REV.	DATE: 3/3/06	C.N. NO. 94844
DWG. NO. P-15257		PRODUCT NO. Z625-86

*REGULARLY FURNISHED UNLESS OTHERWISE SPECIFIED