

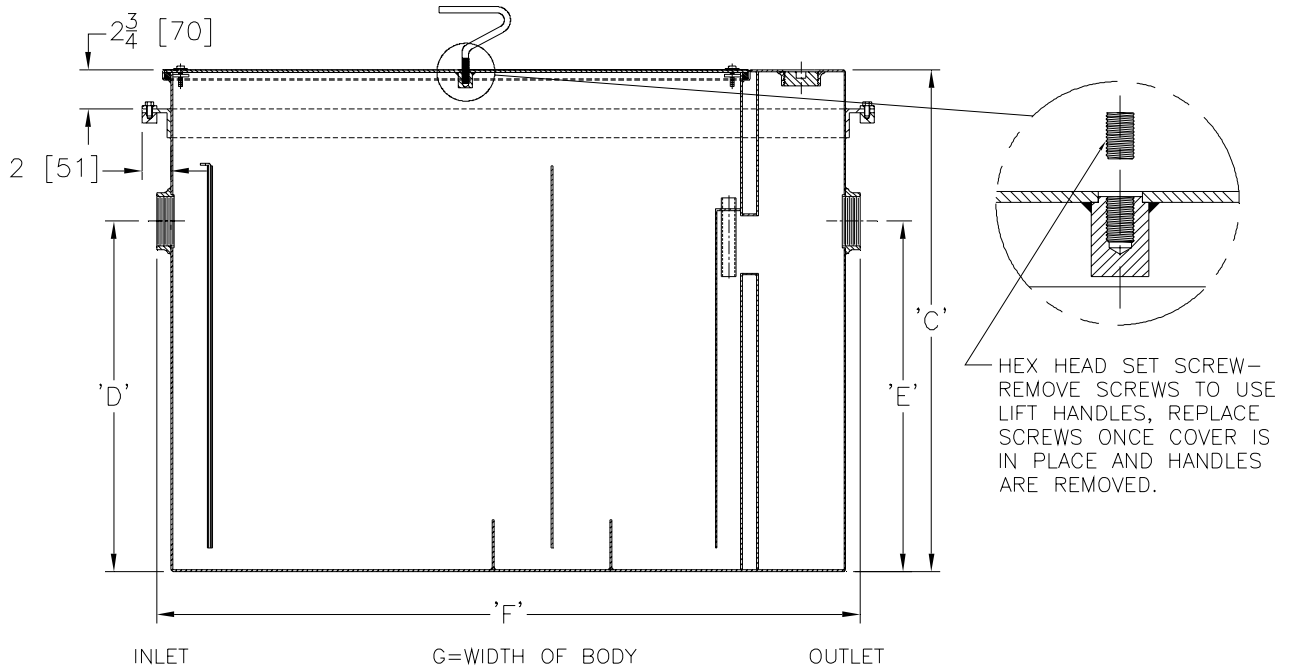


**Z1172-150**  
**LARGE CAPACITY GREASE INTERCEPTOR W/ ANCHOR**  
**FLANGE, CLAMP COLLAR & INTEGRAL EXTENSION**

SPECIFICATION SHEET

TAG \_\_\_\_\_

Dimensional Data (inches and [ mm ]) are Subject to Manufacturing Tolerances and Change Without Notice



Size	Inlet/ Outlet Size**	Flow Rate G.P.M. [L]	Capacity		No. of Covers	Approx. Wt. Lbs. [kg]	Dimensions in Inches			
			Water Gal. [L]	Grease Lbs. [kg]			C	D/E	F	G
1000	4 [102]	100 [378]	110 [416]	200 [91]	1	698 [317]	65 [1651]	23 [584]	42 3/4 [1086]	33 5/8 [854]

**ENGINEERING SPECIFICATION: ZURN ZS1172-150**

All Type 304 stainless steel grease interceptor with integral extension, rated at \_\_\_\_ GPM and \_\_\_\_ Lbs. grease capacity, with internal air relief by-pass, bronze cleanout plug and visible double wall trap seal with removable pressure equalizing/flow diffusing baffle, and anchor flange with clamp collar. Gasketed non-skid secured cover with removable lift handle, complete with flow control fitting. Regularly furnished with inlet and outlet in high position.

**OPTIONS** (Check/specify appropriate options)

**PREFIXES**

\_\_\_ ZS All Type 304 Fabricated Stainless Steel\*

**SUFFIXES**

- \_\_\_ -AL Aluminum Cover
- \_\_\_ -HD Heavy duty traffic cover rated at 10,000 lbs. 4536 [kg] maximum safe live load.
- \_\_\_ -L Angle type (Z1108-L) flow control device.

\*REGULARLY FURNISHED UNLESS OTHERWISE SPECIFIED

REV.	DATE: 8/7/07	C.N. NO. 98558
DWG. NO. P-15553		PRODUCT NO. Z1172-150