



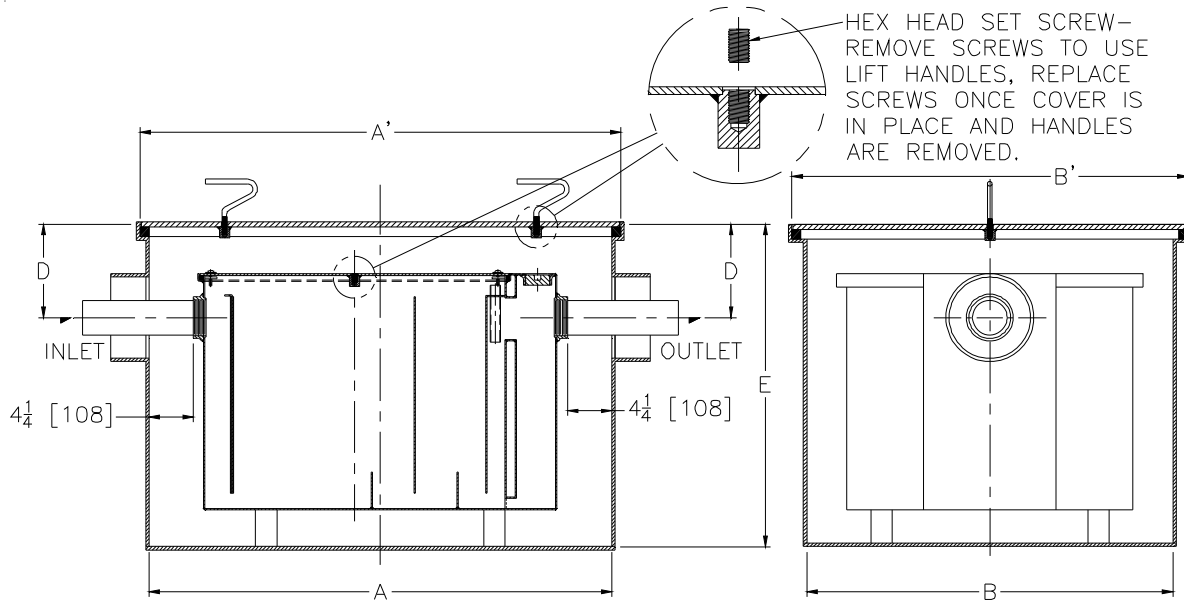
Z1172-109

LARGE CAPACITY GREASE INTERCEPTOR W/ SECONDARY CONTAINMENT RECEIVER

SPECIFICATION SHEET

TAG _____

Dimensional Data (inches and [mm]) are Subject to Manufacturing Tolerances and Change Without Notice



| Size | Inlet/ Outlet Size** | Flow Rate G.P.M. [L] | Capacity | | No. of Covers | Dimensions in Inches | | | | | |
|------|----------------------------|----------------------------|-------------------|---------------------|------------------|----------------------|---------------|--------------|--------------|---------|--------------|
| | | | Water Gal. [L] | Grease Lbs. [kg] | | A | A' | B | B' | D | E |
| 900 | 3 [76] | 75 [284] | 65 [246] | 150 [68] | 1 | 44 1/4 [1124] | 46 1/4 [1175] | 33 1/8 [841] | 35 1/8 [892] | 9 [229] | 31 1/4 [794] |

ENGINEERING SPECIFICATION: ZURN Z1172-109

Acid Resistant Coated Secondary Containment receiver. Equipped with gasketed cover recessed for tile/terrazzo (specify type and thickness of tile). Complete with Z1172 Greaseceptor. (for greaseceptor specifications see Z1172 drawing). All covers supplied with removable lift handles.

OPTIONS (Check/specify appropriate options)

PREFIXES

_____ Z Acid Resistant Coated Fabricated Steel*

SUFFIXES

- _____ -HD Heavy duty traffic cover rated at 10,000 lbs. [4536] kg. maximum safe live load.
- _____ -K Anchor flange 1 3/4 [44] down from top and 2 [51] wide.
- _____ -KC Anchor flange 1 3/4 [44] down from top and 2 [51] wide with clamp collar.
- _____ -L Angle type (Z1108-L) flow control device.

*REGULARLY FURNISHED UNLESS OTHERWISE SPECIFIED

| | | |
|------------------|-----------------------|----------------|
| REV. A | DATE: 08/01/07 | C.N. NO. 97061 |
| DWG. NO. P-14672 | PRODUCT NO. Z1172-109 | |