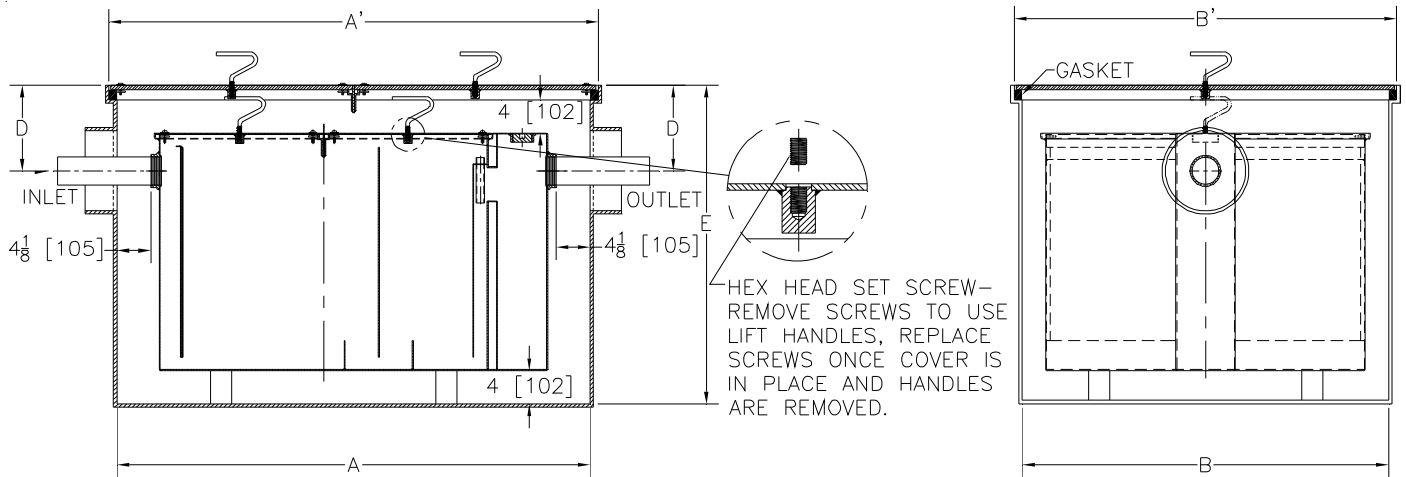




# Z1172-88

## LARGE CAPACITY GREASE INTERCEPTOR W/ SECONDARY CONTAINMENT RECEIVER

Dimensional Data (inches and [ mm ]) are Subject to Manufacturing Tolerances and Change Without Notice



Size	Inlet/ Outlet Size**	Flow Rate G.P.M. [L]	Capacity		No. of Covers	Dimensions in Inches					
			Water Gal. [L]	Grease Lbs. [kg]		A	A'	B	B'	D	E
			900	3 [76]		75 [284]	65 [246]	150 [68]	1	44 1/4 [1124]	46 1/4[1175]
1000	100 [378]	110 [416]	200 [91]		51 [1295]	53[1346]	38 1/8[968]	40 1/8[1019]		8 3/4[264]	35 1/2[902]
1100	125 [472]	150 [567]	250 [114]		57 1/2 [1461]	59 1/2[1511]	44 1/2[1130]	46 1/2[1181]		10 3/8[264]	38 5/8[981]
1200	4 [102]	150 [567]	195 [737]	300 [136]	2	64 1/4 [1632]	66 1/4[1683]	46 1/8[1171]	48 1/8[1222]	10 1/4[260]	39 1/4[997]
1300		200 [756]	270 [1021]	400 [182]		69 1/4 [1759]	71 1/4[1810]	48 1/8[1222]	50 1/8[1273]	10 3/8[264]	44[1118]
1400		250 [945]	465 [1758]	500 [227]		79 1/4 [2013]	81 1/4[2064]	56 1/8[1425]	58 1/8[1476]	9 3/4[248]	49 1/2[1257]
1500	5 [127]	300 [1134]	665 [2514]	600 [272]	2	88 1/4 [2242]	90 1/4[2292]	63 1/8[1603]	65 1/8[1654]	6 5/8[168]	54 3/4[1391]
1600		350 [1323]	865 [3278]	700 [318]		95 1/4 [2419]	97 1/4[2470]	68 1/8[1730]	70 1/8[1781]	6 5/8[168]	59[1499]
1700		400 [1512]	1095 [4139]	800 [363]		102 1/4 [2597]	104 1/4[2648]	71 1/2[1816]	73 1/2[1867]	6 5/8[168]	62 3/4[1594]
1800	6 [152]	450 [1701]	1280 [4838]	900 [409]	3	108 1/4 [2750]	110 1/4[2800]	76 1/2[1943]	78 1/2[1994]	6 5/8[168]	63 3/4[1619]
1900		500 [1890]	1440 [5443]	1000 [454]		112 1/4 [2851]	114 1/4[2902]	82 1/4[2089]	84 1/4[2140]	10 1/4[260]	65 3/4[1670]

**ENGINEERING SPECIFICATION: ZURN Z1172-88**

Acid Resistant Coated Secondary Containment receiver. Equipped with gasketed non-skid cover with removable lift handles. Complete with Z1172 Greaseptor. (for greaseptor specifications see Z1172 drawing).

**OPTIONS** (Check/specify appropriate options)

**PREFIXES**

\_\_\_ Z Acid Resistant Coated Fabricated Steel\*

**SUFFIXES**

- \_\_\_ -HD Heavy duty traffic cover rated at 10,000 lbs. [4536 Kg.] maximum safe live load.
- \_\_\_ -K Anchor flange 1 3/4 [44] down from top and 2 [51] wide.
- \_\_\_ -KC Anchor flange 1 3/4 [44] down from top and 2 [51] wide with clamp collar.
- \_\_\_ -L Angle type (Z1108-L) flow control device.

REV. B	DATE: 08/14/06	C.N. NO. 95434
DWG. NO. P-14179	PRODUCT NO. Z1172-88	

\*REGULARLY FURNISHED UNLESS OTHERWISE SPECIFIED