



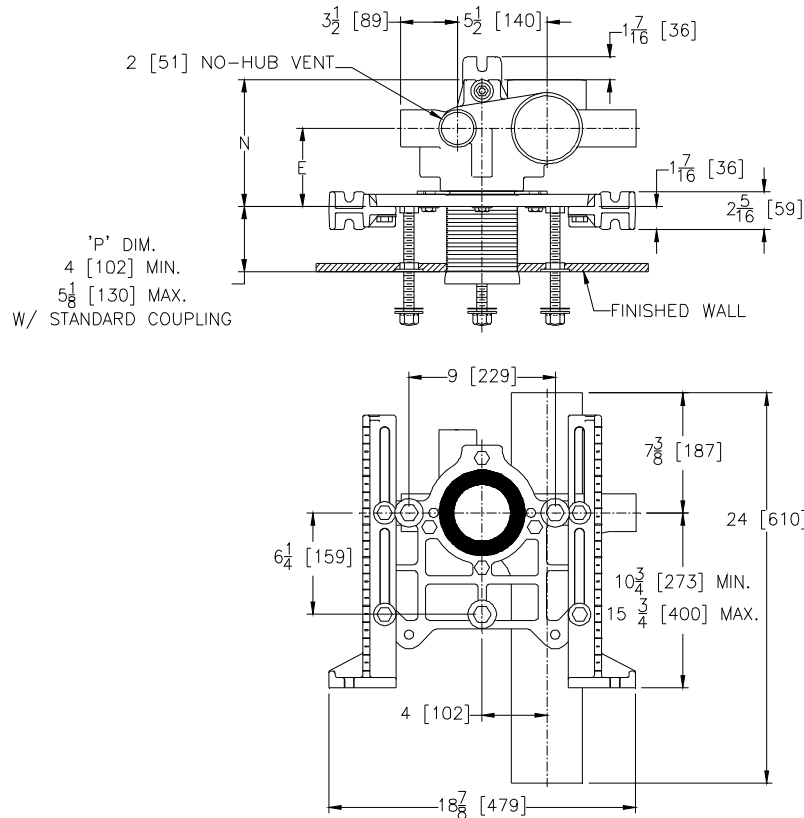
Z1209-B

VERTICAL OFFSET BLOWOUT WATER CLOSET SUPPORT SYSTEM

SPECIFICATION SHEET

TAG _____

Dimensional Data (inches and [mm]) are Subject to Manufacturing Tolerances and Change Without Notice



NOTE:

1. Min. 'P' dim. obtainable = 2 [51] with cut standard coupling.
2. Feet bolted to floor using min. 1/2 [13] dia. bolts and back slots on carrier feet.
3. Back anchor foot required for secure installation.

Product No.	Dimension In Inches [mm]		Approx. Wt. Lbs. [kg]
	E	N	
Z1209-NL4-B	4-13/16 [122]	7-13/16 [198]	67 [30]
Z1209-NR4-B	4-13/16 [122]	7-13/16 [198]	67 [30]

ENGINEERING SPECIFICATION: ZURN Z1209-N()4-B

Vertical Blowout Water Closet "Rigid System" with 4" [102mm] size No-Hub 2" [51mm] vent. Complete with Dura-Coated cast iron main fitting, universal floor mounted foot supports, adjustable faceplate, corrosion resistant adjustable ABS coupling with integral test cap, fixture trim, stud protectors, rear anchor tie down, and bonded "Neo-Seal" gasket.

PRODUCT/DEFINITION

- _____ Z1209-NL4-B 4 [102] No-Hub Stack, Left Hand Offset Inlet, 2 [51] Left Hand Vent
_____ Z1209-NR4-B 4 [102] No-Hub Stack, Right Hand Offset Inlet, 2 [51] Right Hand Vent

PREFIXES

- _____ Z D.C.C.I. System with Zurn "ZZ" Adjustable Coupling
_____ ZQ D.C.C.I. System with Non-Adjustable Coupling

SUFFIXES

- | | | | |
|-----------|--|------------|---|
| _____ -CC | Corrosion Resistant Cast Iron Coupling | _____ -RYK | Unistrut Pre-Fab Foot |
| _____ -CL | Coupling Length Other than Standard 6 [152]
(Specify Length Required) | _____ -VP | Vandal Proof Trim |
| _____ -JJ | Two 2 [51] Auxiliary Inlet | _____ -X3 | 3 [76] Foot Extension Assembly
(See Z1200-FT-EXT-3) |
| _____ -JS | 2 [51] Auxiliary Inlet Stack Side | _____ -X4 | 4 [102] Foot Extension Assembly
(See Z1200-FT-EXT-4) |
| _____ -JV | 2 [51] Auxiliary Inlet Vent Side | _____ -45 | Finishing Frame for Blowout Ststem
(See Z1200-FINFRAME-B |
| _____ -M | Auxiliary Foot Support
(For 'P'-Dim. 10 [254] to 18 [457]) | _____ -50 | Flush Valve Supply Support for W.C.
(See Z1200-SPLY-SPRT-WC) |
| _____ -PF | Pre-Fab Foot | | |
| _____ -PS | Pre-Fab Slotted Foot | | |

* Regularly furnished unless otherwise specified.