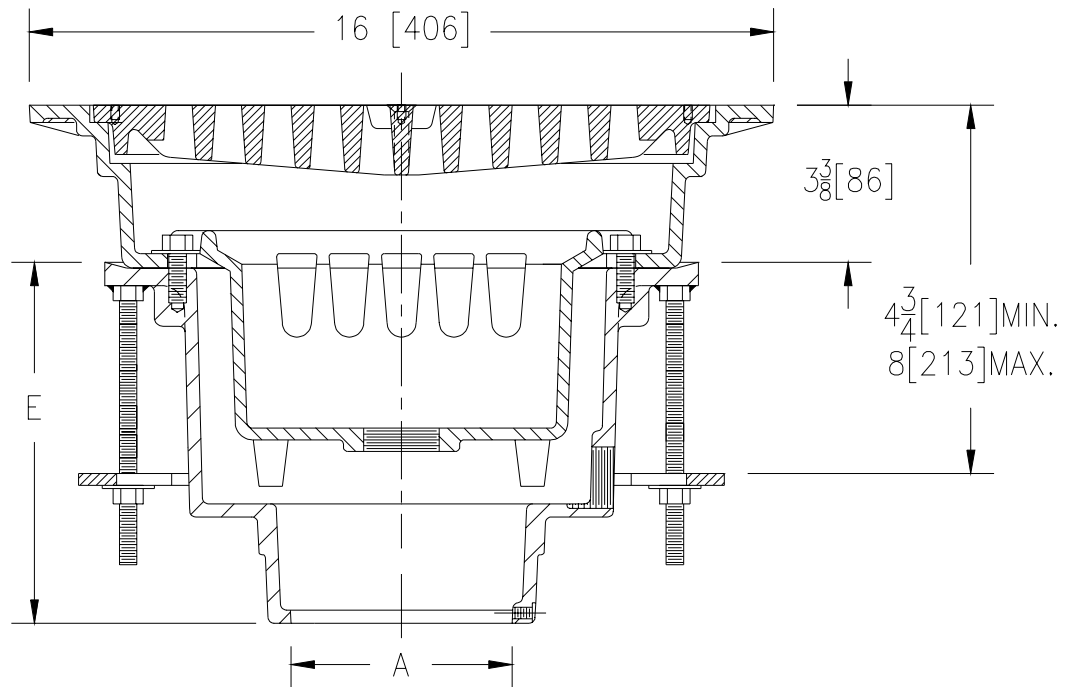




Z-662-83
16" [406] EXTRA HEAVY DUTY DRAIN

TAG _____

Dimensional Data (inches and [mm]) are Subject to Manufacturing Tolerances and Change Without Notice



A- Pipe Size In.	Approx. Wt. Lbs. [kg]	Grate Open Area Sq. In. [cm ²]
3-4 [75-100]	84 [38]	53 [342]
5-6 [125-150]	90 [41]	

ENGINEERING SPECIFICATION: Z-662-83

16 [406] Square top drain, Dura-Coated cast iron body with bottom outlet, seepage pan and combination membrane flashing clamp and frame for extra heavy duty slotted loose grate, with suspended sediment bucket and underdeck clamp.

OPTIONS (Check/specify appropriate options)

PIPE SIZE

(Specify size/type) **OUTLET**

'E' BODY HT. DIM.

3 thru 6 [75 thru 150]	___ IC Inside Caulk	7 3/4 [197]
3, 4, 6 [75, 100, 150]	___ IG Inside Caulk w/Sealtrol Gskt.	7 3/4 [197]
3 thru 6 [75 thru 150]	___ IP Threaded	6 3/8 [162]
(IP w/Z-1040-1)	___ NH No-Hub	
3, 4 [75, 100]	___ NL Neo-Loc	7 1/8 [181]

PREFIXES

- ___ Z- D.C.C.I. Body and Grate*
- ___ ZB- D.C.C.I Body w/Polished Bronze Top (Add 3/16 [5] to 3 3/8 [86] and 11/16 [17] to 16 [406] Dim.)
- ___ ZN- D.C.C.I Body w/Polished Nickel Bronze Top (Add 3/16 [5] to 3 3/8 [86] and 11/16 [17] to 16 [406] Dim.)

SUFFIXES

- ___ -DG Duresist Grate
- ___ -G Galvanized Cast Iron
- ___ -SS Stainless Mesh Liner for Bucket
- ___ -TS Top Secured With Slotted Screws
- ___ -V Backwater Valve (See Z-1099)
- ___ -VP Vandal Proof Secured Top
- ___ -YA Aluminum Sediment Bucket
- ___ -90 90° Threaded Side Outlet Body

*REGULARLY FURNISHED UNLESS OTHERWISE SPECIFIED

REV.	DATE: 8/11/97	C.N. NO. 78336
DWG. NO. P-14503		PRODUCT NO. Z-662-83