

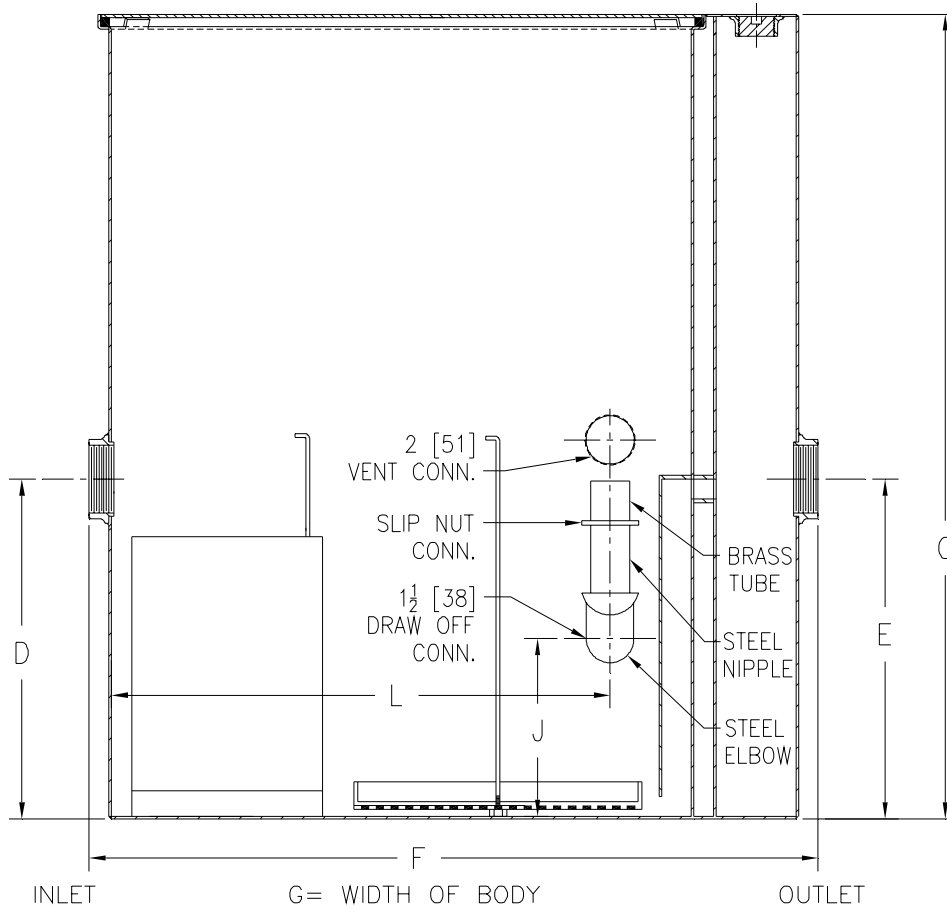


**Z1188-139**  
**LARGE CAPACITY OIL INTERCEPTOR W/  
 50 [1270] INTEGRAL EXTENSION**

SPECIFICATION SHEET

TAG \_\_\_\_\_

Dimensional Data (inches and [ mm ]) are Subject to Manufacturing Tolerances and Change Without Notice



Flow Rate GPM [L] Min	Inlet/ Outlet Size	Water Capacity Gal. [L]	Approx. Wt. Lbs. [kg]	No. of Covers	Dimensions in Inches					
					C	D/E	F	G	J	L
75	3 [76]	65 [246]	650 [295]	1	72 3/4 [1848]	18 1/2 [270]	36 [914]	25 5/8 [727]	8 [203]	25 3/4 [654]

**ENGINEERING SPECIFICATION: ZURN Z1188-139**

Large capacity Acid Resistant Coated interior and exterior fabricated steel oil interceptor with integral extension, bronze cleanout plug and visible double wall trap seal, removable combination pressure equalizing/flow diffusing baffle and sediment bucket, horizontal baffle, adjustable oil draw-off and vent connections either side. Secured gasketed non-skid cover complete with flow control fitting. Regularly furnished with inlet and outlet in high position.

**OPTIONS** (Check/specify appropriate options)

**PREFIXES**

\_\_\_ Z Acid Resistant Coated Fabricated Steel\*

**SUFFIXES**

- \_\_\_ -HD Heavy-duty traffic cover rated at 10,000 lbs [4536] kg. maximum safe live load.
- \_\_\_ -K Anchor flange 1 3/4 [44] down from top and 2 [51] wide.
- \_\_\_ -KC Anchor flange 1 3/4 [44] down from top and 2 [51] wide with clamp collar. A 3 [76] minimum extension height is

<b>REV.</b>	<b>DATE: 4/25/06</b>	<b>C.N. NO. 95054</b>
<b>DWG. NO. P-15271</b>	<b>PRODUCT NO. Z1188-139</b>	

\*REGULARLY FURNISHED UNLESS OTHERWISE SPECIFIED