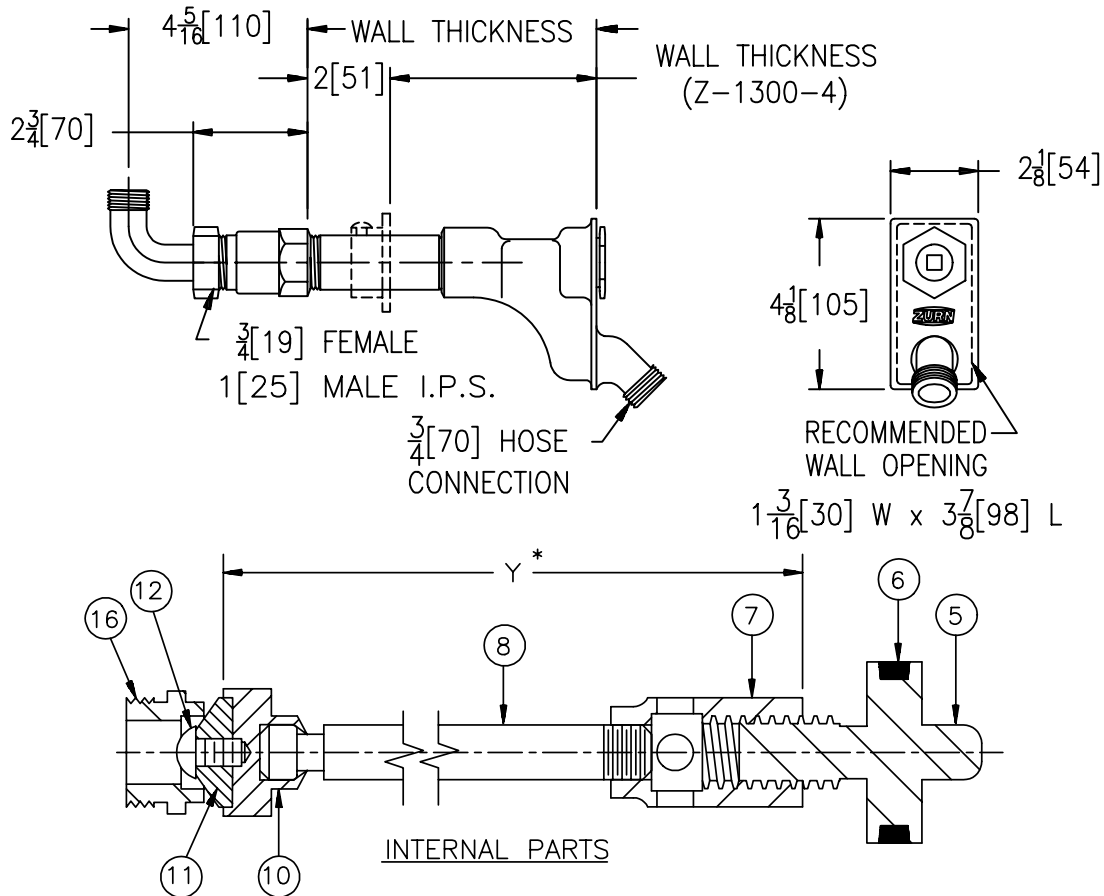




Z-1315-75
WALL HYDRANT
Exposed, Non-Freeze

TAG _____

Dimensional Data (inches and [mm]) are Subject to Manufacturing Tolerances and Change Without Notice



Wall Thickness Inches	Approx. Wt. Lbs. [kg]
4-6-8 [102-152-203]	6 [3]
10-12-14 [254-305-356]	8 [4]
16-18 [406-457]	10 [4]
20-22-24 [508-559-610]	12 [5]

ENGINEERING SPECIFICATION: ZURN-1315-75 Exposed, non-freeze wall hydrant, with galvanized casing, all bronze interior parts, non-turning operating rod with free-floating compression closure valve, replaceable bronze seat and seat washer, and combination 3/4 [19] female or 1 [25] male straight IP inlet with 3/4 [19] IP 90° inlet elbow with union nut. Complete with operating key.

OPTIONS (Check/specify appropriate options)

SUFFIXES

- _____ -RK Hydrant Parts Repair Kit
- _____ -3 3/4 [19] Solder Female Inlet Adapter
- _____ -4 Wall Clamp
- _____ -5 3/4 [19] Adapter Vacuum Breaker
- _____ -6 Polished Bronze Face
- _____ -11 Statuary Bronze Face
 (Specify Light, Medium or Dark Finish)

PARTS LIST

Item	Name	Quan.
5	Operating Screw	1
6	O-Ring	1
7	Operating Coupling	1
8	Operating Rod	1
16	Removable Seat	1
10	Washer Guide	1
11	Washer (neoprene)	1
12	Screw	1

REV.	DATE: 12/22/95	C.N. NO. 73754
DWG. NO. P-14274 PRODUCT NO. Z-1315-75		

*WHEN ORDERING REPLACEMENT PARTS SPECIFY Y DIM.