



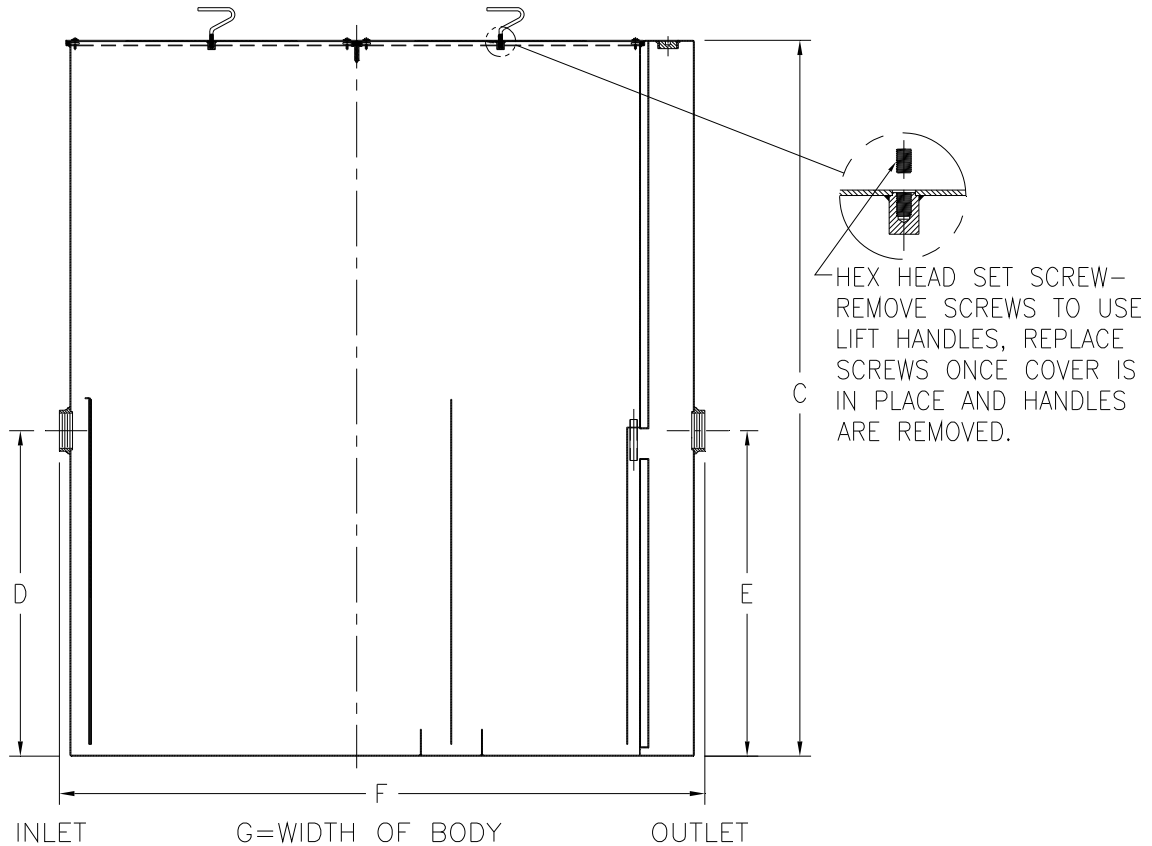
Z1172-105

96 1/2 [2451] HIGH LARGE CAPACITY GREASE INTERCEPTOR

SPECIFICATION SHEET

TAG _____

Dimensional Data (inches and [mm]) are Subject to Manufacturing Tolerances and Change Without Notice



Size	Inlet/ Outlet Size**	Flow Rate G.P.M. [L]	Capacity		No. of Covers	Approx. Wt. Lbs. [kg]	Dimensions in Inches			
			Water Gal. [L]	Grease Lbs. [kg]			C	D/E	F	G
1600	6 [152]	350 [1323]	865 [3278]	700 [318]	2	2096 [951]	96 1/2 [2451]	43 7/8 [1114]	87 [2210]	63 5/8 [1616]

ENGINEERING SPECIFICATION: ZURN Z1172-105

96 1/2 [2451] high large capacity Acid Resistant Coated interior and exterior fabricated steel grease interceptor, rated at ____ GPM and ____ Lbs. grease capacity, with internal air relief by-pass, bronze cleanout plug and visible double wall trap seal with removable pressure equalizing/flow diffusing baffle. Gasketed non-skid secured cover with removable lift handles and enzyme port having bronze plug, complete with flow control fitting. Regularly furnished with inlet and outlet in high position.

OPTIONS (Check/specify appropriate options)

PREFIXES

____ Z Acid Resistant Coated Fabricated Steel*

SUFFIXES

- ____ -CC 8 [203] Diameter Cleanout Cover
- ____ -E Acid Resistant Coated Interior and exterior fabricated steel extension section. (Specify 'C' Dim. required) for recessed installation.
- ____ -HD Heavy duty traffic cover rated at 10,000 lbs. [4536] kg. maximum safe live load.
- ____ -K Anchor flange 1 3/4 [44] down from top and 2 [51] wide.
- ____ -KC Anchor flange 1 3/4 [44] down from top and 2 [51] wide with clamp collar.

REV. A	DATE: 07/30/07	C.N. NO. 97019
DWG. NO. P-14402	PRODUCT NO. Z1172-105	

*REGULARLY FURNISHED UNLESS OTHERWISE SPECIFIED