



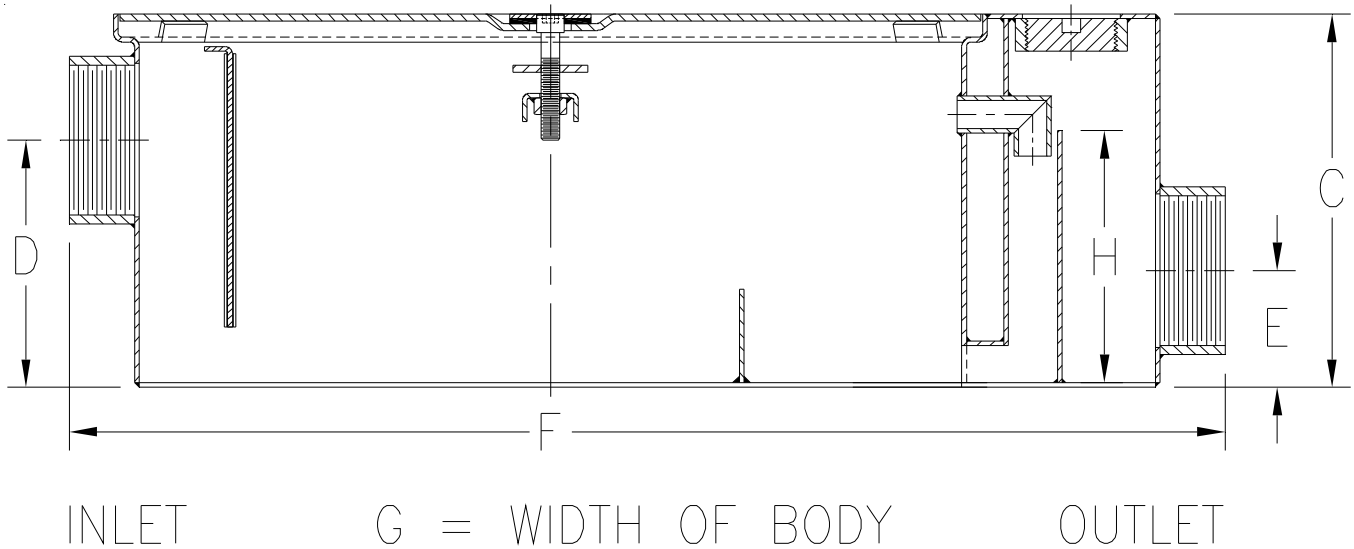
Z1171-91

LOW PROFILE GREASE INTERCEPTOR W/ HIGH INLET

SPECIFICATION SHEET

TAG _____

Dimensional Data (inches and [mm]) are Subject to Manufacturing Tolerances and Change Without Notice



Size	Inlet/ Outlet Size**	Flow Rate G.P.M. [L]	Capacity		Approx. Wt. Lbs. [Kg]	Dimensions in Inches					
			Water Gal. [L]	Grease Lbs. [Kg]		C	D	E	F	G	H
500		20 [76]	15 [60]	40 [18]	102 [46]	10 [254]	6 5/8 [168]	3 1/8 [79]	31 [787]	21 1/8 [536]	6 3/4 [171]
700	3**[76]	35 [132]	30 [132]	70 [32]	172 [78]	10 3/4 [273]	7 3/8 [187]	3 1/8 [79]	42 1/8 [1070]	29 3/8 [746]	7 [178]
800		50 [189]	45 [170]	100 [45]	210 [95]	16 [406]	12 5/8 [321]	10 [254]	49 1/2 [1257]	29 3/8 [746]	10 [254]

ENGINEERING SPECIFICATION: ZURN Z1171-91

Acid Resistant Coated interior and exterior fabricated steel low type grease interceptor, rated at ____ GPM and ____ Lbs. grease capacity, with internal air relief by-pass, bronze cleanout plug, removable pressure equalizing/flow diffusing inlet baffle, fixed bottom outlet baffle, and visible double wall trap seal. Gasketed non-skid secured cover, complete with center tie down assembly and Z1108 flow control fitting. Regularly furnished with 3 [76] high inlet and low outlet.**

OPTIONS (Check/specify appropriate options)

PREFIXES

- ___ Z Acid Resistant Coated Fabricated Steel*
- ___ ZS All Type 304 Fabricated Stainless Steel

SUFFIXES

- ___ L Angle Type (Z1108-L) Flow Control Device with Plunger.

** Inlet and outlet sizes shown indicate standard operating sizes and flow control settings. All sizes will have 4 [102] connections reduced to 3 [76] as standard. If changed, flow control must be adjusted accordingly.

REV.	DATE: 01/03/08	C.N. NO. 97897
DWG. NO. P-15501	PRODUCT NO. Z1171-91	

*REGULARLY FURNISHED UNLESS OTHERWISE SPECIFIED