



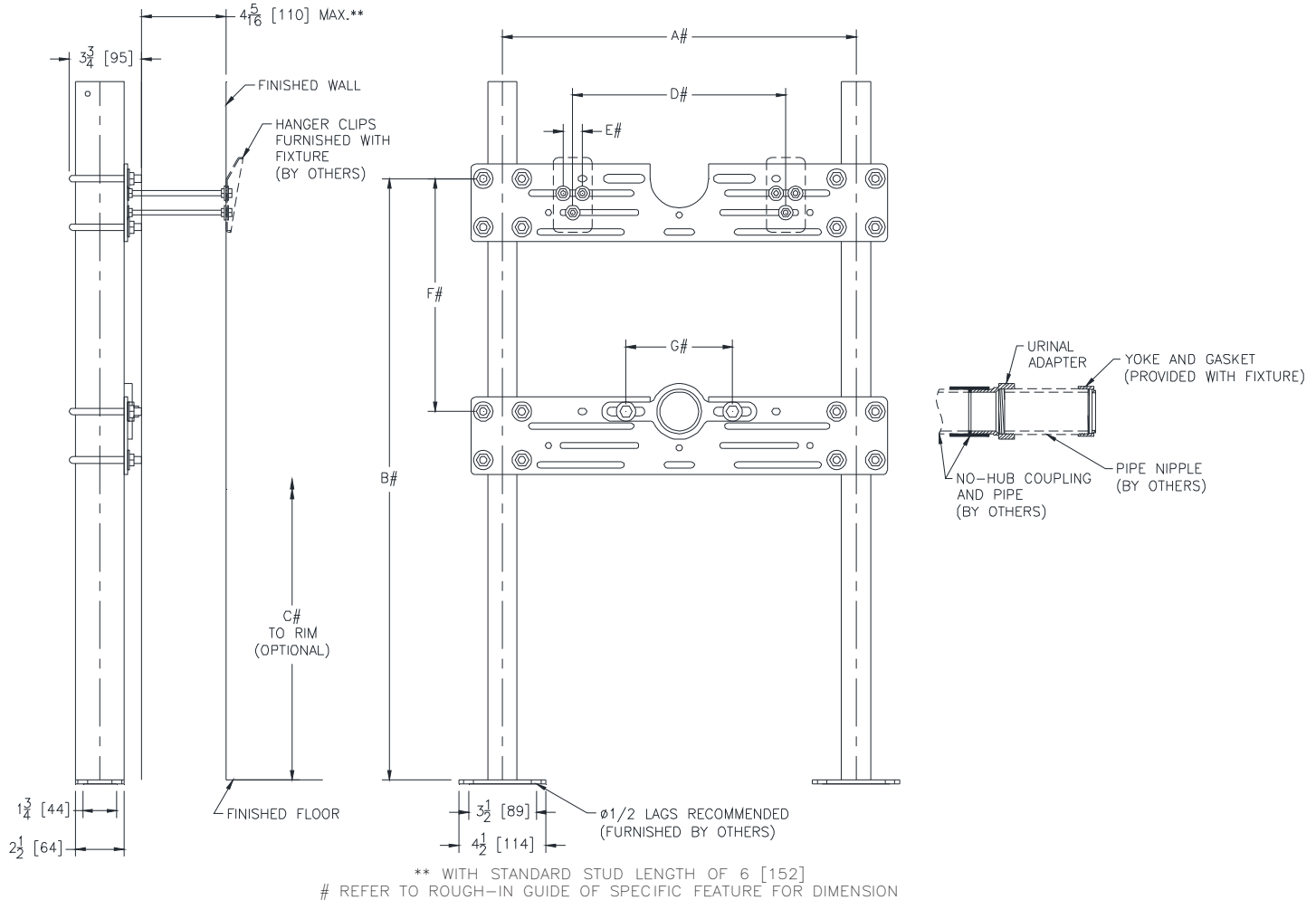
Z1222-UA

URINAL CARRIER SUPPORT SYSTEM W/ URINAL ADAPTER

SPECIFICATION SHEET

TAG _____

Dimensional Data (inches and [mm]) are Subject to Manufacturing Tolerances and Change Without Notice



ENGINEERING SPECIFICATION: ZURN Z1222-UA

Wall urinal support system with urinal adapter complete with Dura-Coated carbon structural steel rectangular tubing uprights, conforming to ASTM A500 grade C, with welded base feet having slotted floor anchor holes. Lower bearing plate is vertically adjustable and accommodates attachment of urinal adapter. Dura-Coated cast iron urinal adapter is provided with 2" [51mm] no-hub outlet and 2" N.P.T. inlet to adapt to drainage pipe and fixture yoke. Upper universal hanger plate is pre-notched for back spud inlet and is designed for various hardware positions and fixtures. Includes mounting fasteners and hardware. Carrier system exceeds load and deflection requirements as outlined in ASME standard A112.6.1M.

OPTIONS (Check/specify appropriate options)

PREFIXES

___ Z Dura-Coated System with Universal Plate*

SUFFIXES

___ -EZ Easy to Install Assembly (Uprights, bearing plate, and hanger plate are factory assembled.)
 ___ -58 Flush Valve Support System

* Regularly furnished unless otherwise specified.