



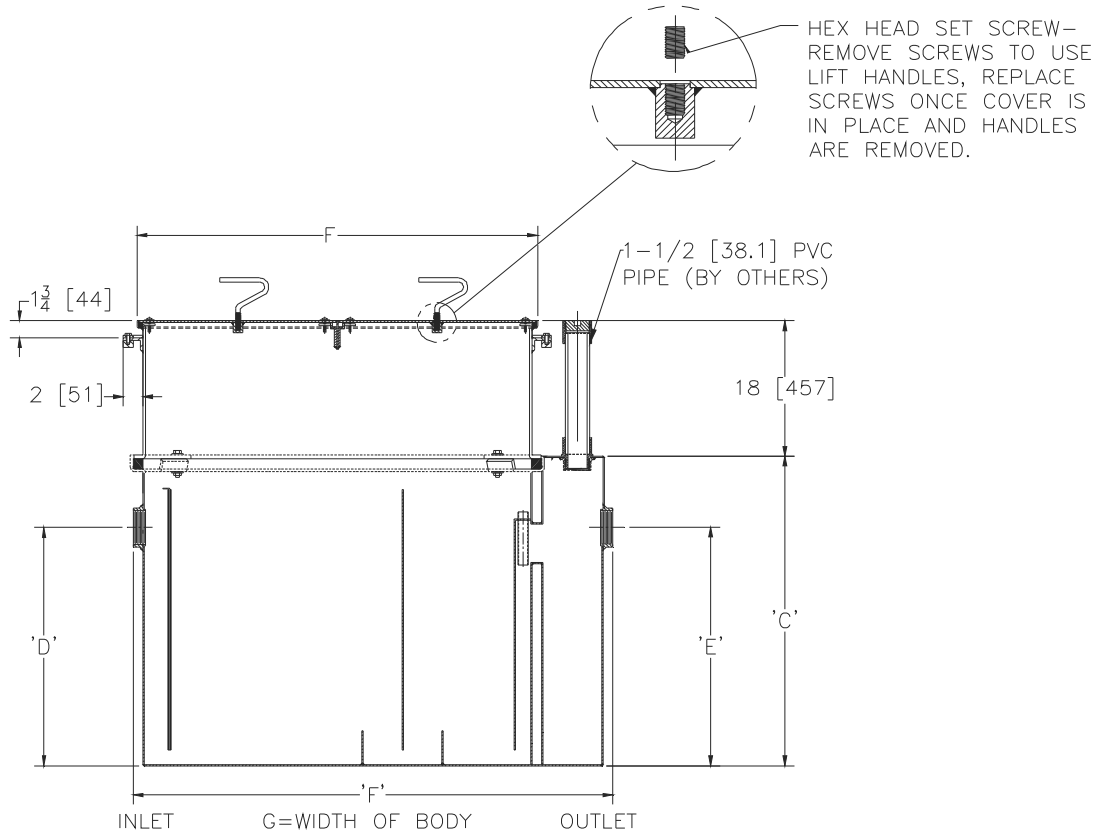
ZS1172-179

LARGE CAPACITY STAINLESS STEEL GREASE INTERCEPTOR W/ 18 [457] RETRO EXTENSION & ANCHOR FLANGE W/ CLAMP COLLAR

SPECIFICATION SHEET

TAG _____

Dimensional Data (inches and [mm]) are Subject to Manufacturing Tolerances and Change Without Notice



Size	Inlet/Outlet Size	Flow Rate G.P.M. [L.P.M.]	Capacity		No. of Covers	Approx. Wt. Lbs. [kg]	Dimensions in Inches [mm]			
			Water Gal. [L]	Grease Lbs. [kg]			C	D/E	F	G
900	4 [102]	75 [284]	65 [246]	150 [68]	1	411 [186]	22-3/4 [578]	18-1/2[470]	36 [914]	28-5/8[727]

ENGINEERING SPECIFICATION: ZURN ZS1172-1779

Large capacity fabricated stainless steel grease interceptor, with retro-extension with anchor flange and clamping collar, rated at 75 GPM [284 LPM] and 150 Lbs [68 kg]. grease capacity, with internal air relief by-pass, stainless steel cleanout plug (which can be used as a sampling port) and visible double wall trap seal with removable pressure equalizing/flow diffusing baffle. Gasketed non-skid secured cover with removable lift handles, complete with flow control fitting. Regularly furnished with 4" [102mm] inlet and outlet in high position.

OPTIONS (Check/specify appropriate options)

PREFIXES

___ ZS All Type 304 Fabricated Stainless Steel

SUFFIXES

___ -L Angle type (Z1108-L) flow control device.
 ___ -PW Plug Wrench

NOTE: Custom outlet position may effect volume capacity and flow rating.

* Regularly furnished unless otherwise specified.