



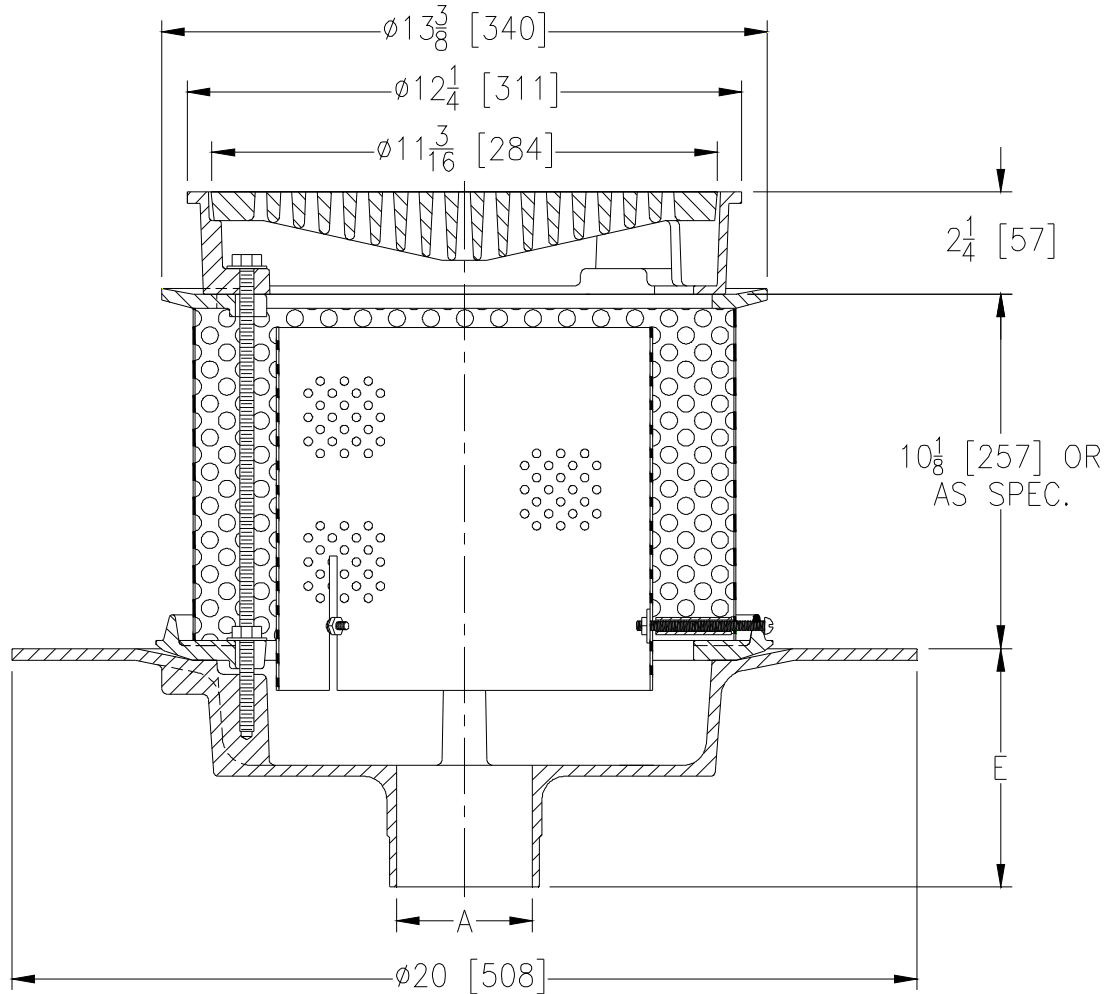
Z107-101

20 [508] WIDE DECK DRAIN W/ STAINLESS STEEL PERFORATED EXTENSION & STAINLESS STEEL FILTER

SPECIFICATION SHEET

TAG _____

Dimensional Data (inches and [mm]) are Subject to Manufacturing Tolerances and Change Without Notice



A Pipe Size In. [mm]	Approx. Wt. Lbs. [kg]	Grate Open Area Sq. In. [cm ²]
3, 4 [76, 102]	49 [22]	33 [213]
6, 8 [152, 203]	51 [23]	

ENGINEERING SPECIFICATION: ZURN Z107-101

20" [508mm] Diameter wide deck drain. Dura-Coated cast iron body with combination membrane flashing clamp/gravel guard, Stainless Steel perforated extension, Stainless Steel secondary perforated filter, frame and heavy-duty slotted grate.

OPTIONS (Check/specify appropriate options)

PIPE SIZE

3,4,6 [76,102,152]
3,4 [76,102]
3,4,6,8 [76,102,152,203]

(Specify size/type) OUTLET

_____	IC	Inside Caulk
_____	IP	Threaded
_____	NH	No-Hub

E BODY HT. DIM.

5-1/4 [133]
5-1/4 [133]
5-1/4 [133]

PREFIXES

___ Z D.C.C.I. Body Assembly*

* Regularly furnished unless otherwise specified.