



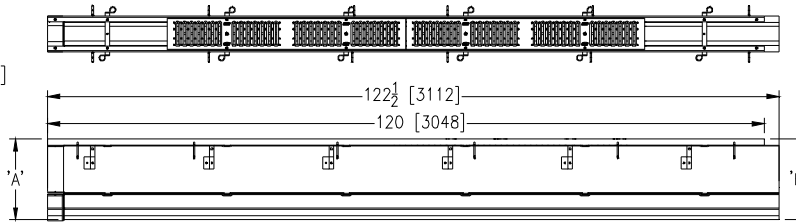
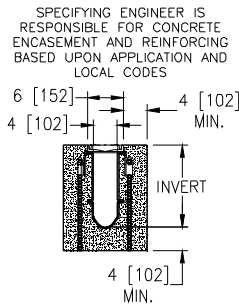
# Z806-HDS-SW

6 [152] WIDE REVEAL FIBER REINFORCED POLYMER  
TRENCH DRAIN SYSTEM WITH HEAVY-DUTY STAINLESS  
STEEL FRAME WITH 8.1 [206] SIDEWALL EXTENSION

SPECIFICATION SHEET

TAG \_\_\_\_\_

Dimensional Data (inches and [ mm ]) are Subject to Manufacturing Tolerances and Change Without Notice



NOTE: + Actual Channel length is 122 1/2 [3112] to allow for overlap.

### ENGINEERING SPECIFICATION: Zurn Z806-HDS-SW

Channels shall be 120" [3048mm] long, 6" [152mm] wide and have a 4" [102mm] throat. Modular channel sections shall be made of Fiber Reinforced Polymer (FRP). Shall have a positive mechanical connection between channel sections that will not separate during the installation and shall mechanically lock into the concrete surround every 10" [254mm]. Channels shall weigh less than 2.31 lbs. [1.05kg] per linear foot, have a smooth, 1-1/2" [38mm] radiused self cleaning bottom with a Manning's coefficient of .009 and .75% or neutral 0% built in slope. Channels shall have FRP SW Side Walls attached for an additional 8.1" [206mm] added to the standard channel invert for additional flow capability shown in chart below. Channels provided with standard RFSC grates that lockdown to the frame. Stainless steel reinforced slotted grate is 5-3/8" [137mm] wide and 40" [1016mm] long weighing 5.2 lbs per linear foot [7.9kg/m]. The grate has an open area of 12.08 sw. inches per linear foot [254cm<sup>2</sup>/m]. Grate conforms to DIN rating of C, ANSI rating of Heavy-Duty, ADA compliant\* and H-20 load rating. Stainless steel grate conforms to ASTM A351 Type 304 (grade CF8M Type 316 by request) cast body and A-240 Type 304 (or 316 by request) for grate skin. \*Elongated openings must be placed perpendicular to the dominant direction of travel. The .105" [2.66mm] thick Heavy-Duty Stainless Steel Frame Assembly conforms to ASTM specification A-240 (type 304). with 12-4" [102mm] long concrete anchors per 120" [3048mm]. Grate lockdown bars are to be integral to the frame. Frames Shall be produced in the U.S.A.

### PREFIX OPTIONS (Check/specify appropriate options)

- Z Ten-foot Fiber Reinforced Polymer \*
- ZV Ten-foot Fiber Reinforced Vinylester

### SUFFIX OPTIONS (Check/specify appropriate options)

#### Outlet Adapters Add/Each

- E1 Closed End Cap
- E2 2 [51] No-Hub End Outlet
- E3 3 [76] No-Hub End Outlet
- E4 4 [102] No-Hub End Outlet
- E6 6 [152] No-Hub End Outlet
- U2 2 [51] No-Hub Bottom Outlet
- U3 3 [76] No-Hub Bottom Outlet
- U4 4 [102] No-Hub Bottom Outlet
- U6 6 [152] No-Hub Bottom Outlet

#### Grate Options (Load Classifications are per DIN EN1433)

- BDC Black Acid Resistant Epoxy Coated Ductile Grate - Class C
- BDE Black Acid Resistant Epoxy Coated Ductile Grate - Class E
- DC Ductile Iron Solid Cover - Class C
- DGC Ductile Iron Slotted Grate - Class C
- DGE Ductile Iron Slotted Grate - Class E
- HPD Heel-Proof Ductile Slotted Grate - Class C
- HPDE Heel-Proof Ductile Slotted Grate - Class E
- HPP Heel-Proof Polyethylene Grate - Class A
- LD Ductile Iron Longitudinal Slotted Grate - Class B
- RFSC Reinforced Slotted Stainless Steel Grate - Class C\*
- RPSC Reinforced Perforated Stainless Steel Grate - Class C
- RPSRC Reinforced Perforated Stainless Steel Reversed Punch Grate - Class C

#### Decorative Grate Options (Load Classifications are per DIN EN1433)

- BCD Bronze Circular Decorative Grate - Class A
- BDD Bronze Diagonal Decorative Grate - Class A
- DCD Ductile Iron Circular Decorative Grate - Class C
- DDD Ductile Iron Diagonal Decorative Grate - Class A
- DOG Ductile Iron Decorative Grate - Class A
- DWV Ductile Wave Decorative Grate - Class A
- HPB Heel-Proof Bronze Slotted Grate - Class A
- HPS Heel-Proof Stainless Steel Slotted Grate - Class A
- SBG Stainless Steel Bar Grate - Class E
- SCD Stainless Steel Circular Decorative Grate - Class B
- SDD Stainless Steel Diagonal Decorative Grate - Class B
- SOG Stainless Steel Decorative Grate - Class B

#### Miscellaneous Options

- DB Bottom Dome Strainer
- JC Joint Connector
- RC Rebar Clip (Set of 2)
- VP Vandal-Proof Lockdown

Trench No.	'A' Shallow Inv.	'B' Deep Inv.	Flow		
			(cfs)	(gpm)	(lps)
1002SW	12.50 [318]	13.40 [340]	1.297	558	35
1002NSW	13.40 [340]	13.40 [340]	-	-	-
1003SW	13.40 [340]	14.30 [363]	1.297	582	37
1004SW	14.30 [363]	15.20 [386]	1.350	606	38
1004NSW	15.20 [386]	15.20 [386]	-	-	-
1005SW	15.20 [386]	16.10 [409]	1.458	654	41
1006SW	16.10 [409]	17.00 [432]	1.511	678	43
1007SW	17.00 [432]	17.90 [455]	1.565	702	44
1008SW	17.90 [455]	18.80 [478]	1.673	751	47
1008NSW	18.80 [478]	18.80 [478]	-	-	-
1009SW	18.80 [478]	19.70 [500]	1.780	799	50
1010SW	19.70 [500]	20.60 [523]	1.888	847	53

### MADE in the U.S.A. (Load Classifications are per DIN EN1433)

- BDE-USA Black Acid Resistant Epoxy Coated Ductile Grate - Class E
- DGC-USA Ductile Iron Slotted Grate - Class C
- DGE-USA Ductile Iron Slotted Grate - Class E
- FS Fabricated Stainless Steel Slotted Grate - Class A
- PS Perforated Stainless Steel Grate - Class A
- PPC Plastic Perforated Grate - Class C

### Decorative MADE in the U.S.A. (Load Classifications are per DIN EN1433)

- BZ Bronze Decorative Grate - Class A
- NBZ Nickel Bronze Decorative Grate - Class A
- PSR Perforated Stainless Steel Raised Grate - Class A
- SWG Stainless Steel Wire Grate - Class A

\* Regularly furnished unless otherwise specified.