



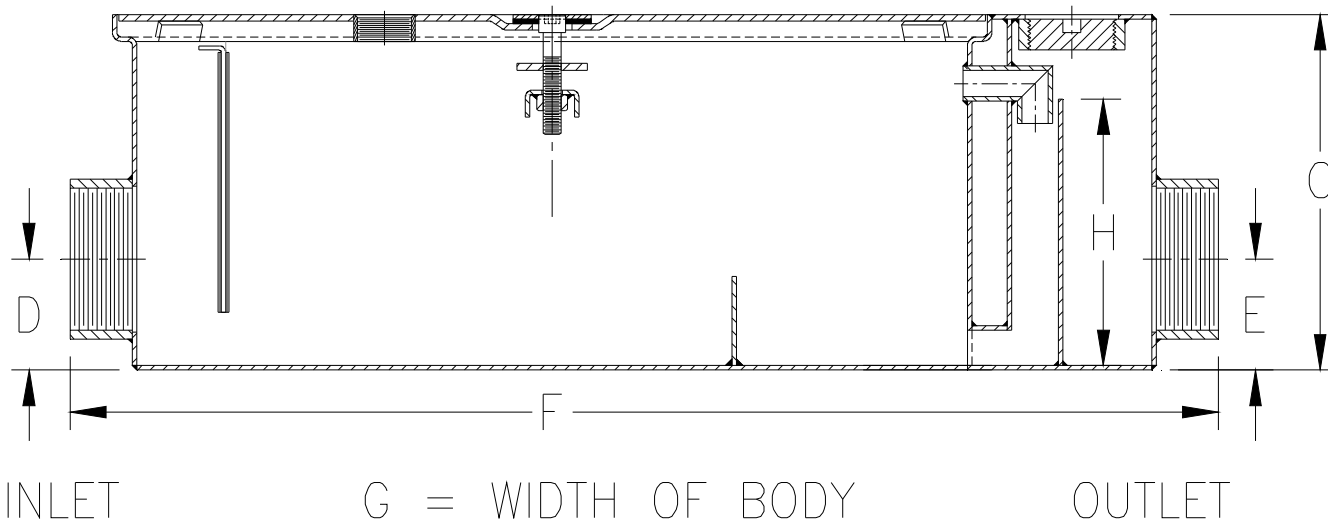
# Z1171-86

## LOW PROFILE GREASE INTERCEPTOR W/ENZYME PORT

SPECIFICATION SHEET

TAG \_\_\_\_\_

Dimensional Data (inches and [ mm ]) are Subject to Manufacturing Tolerances and Change Without Notice



Size	Inlet/ Outlet Size*	Flow Rate G.P.M. [L]	Capacity		Approx. Wt. Lbs. [kg]	Dimensions in Inches				
			Water Gal. [L]	Grease Lbs. [kg]		C	D/E	F	G	H
500	3* [76]	20 [76]	15 [60]	40 [18]	102 [46]	10 [254]	3-1/8 [79]	31 [787]	21-1/8 [536]	6-3/4 [171]
700		35 [132]	30 [113]	70 [32]	172 [78]	10-3/4 [273]	3-1/8 [79]	42-1/8 [1070]	29-3/8 [746]	7 [178]
800		50 [189]	45 [170]	100 [45]	210 [95]	16 [406]	10 [254]	49-1/2 [1257]	29-3/8 [746]	10 [254]

**ENGINEERING SPECIFICATION: ZURN Z1171-86**

Acid Resistant Coated interior and exterior fabricated steel low type grease interceptor, PDI rated at \_\_\_\_ GPM and \_\_\_\_ Lbs. grease capacity, with internal air relief by-pass, bronze cleanout plug, removable pressure equalizing/flow diffusing inlet baffle, fixed bottom outlet baffle, and visible double wall trap seal. Gasketed non-skid secured cover with enzyme port, complete with center tie down assembly and Z1108 flow control fitting. Regularly furnished with 3 [76] low inlet and outlet.\*

**OPTIONS** (Check/specify appropriate options)

**PREFIXES**

- \_\_\_\_ Z Acid Resistant Coated Fabricated Steel\*
- \_\_\_\_ ZS All Type 304 Fabricated Stainless Steel

**SUFFIXES**

- \_\_\_\_ -L Angle Type (Z1108-L) Flow Control Device with Plunger.
- \_\_\_\_ -PW Plug Wrench

Caution: Installations using indirect piping to unit could result in standing water in floor sink or flooding if line blockage occurs.

REV.	DATE: 05/08/12	C.N. NO. 124345
DWG. NO. 309678		PRODUCT NO. Z1171-86

\*REGULARLY FURNISHED UNLESS OTHERWISE SPECIFIED