



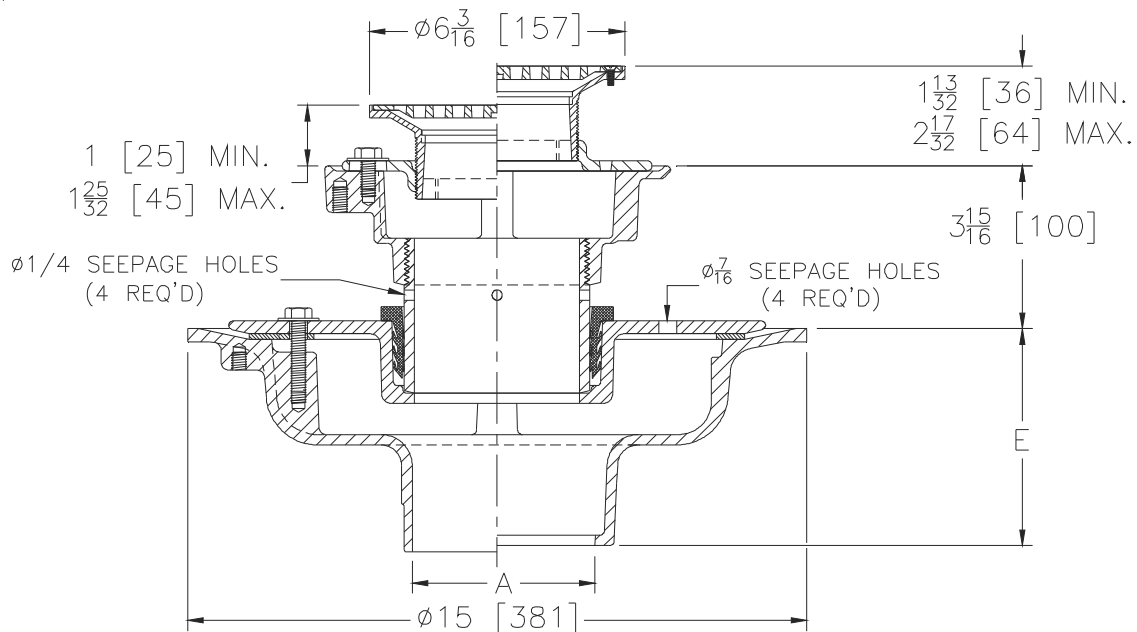
Z625-108

ISOLATION DECK ADJUSTABLE DRAIN WITH SEEPAGE HOLES AT LOWER DRAIN

SPECIFICATION SHEET

TAG _____

Dimensional Data (inches and [mm]) are Subject to Manufacturing Tolerances and Change Without Notice



A Pipe Size Inches [mm]	Approx. Wt. Lbs. [kg]	Grate Open Area Sq. In. [cm ²]
2,3,4 [51,76,102]	42 [19]	9 [58]
5,6 [127,152]		

ENGINEERING SPECIFICATION: ZURN ZN625-108

Adjustable isolation deck drain, Dura-Coated cast iron upper and lower bodies, upper and lower clamp collars, neoprene flex gasket, isolation nipple with seepage holes and adjustable 6" [152mm] diameter nickel bronze strainer.

OPTIONS (Check/specify appropriate options)

PIPE SIZE

2,3,4,5,6 [51,76,102,127,152]
 2,3,4,6 [51,76,102,152]
 2,3,4,5,6 [51,76,102,127,152]
 2,3,4,5,6 [51,76,102,127,152]
 2,3,4 [51,76,102]

(Specify size/type) OUTLET

___ IC Inside Caulk
 ___ IG Inside Gasket
 ___ IP Threaded
 ___ NH No-Hub
 ___ NL Neo-Loc

'E' BODY HT. DIM.

5-1/4 [133]
 5-1/4 [133]
 3-3/4 [95]
 5-1/4 [133]
 4-5/8 [117]

PREFIXES

___ ZB D.C.C.I Body w/ Polished Bronze Top
 ___ ZN D.C.C.I Body w/ Polished Nickel Bronze Top*

SUFFIXES

___ -C Underdeck Clamp (Lower Body)
 ___ -G Galvanized Cast Iron
 ___ -PC Protective Cover
 ___ -R Sump Receiver (Lower Body)
 ___ -U 3 [76] High Extension Adapter (Upper Body)
 ___ -VP Vandal-Proof Secured Top
 ___ -Y Sediment Bucket (Upper Body)

* Regularly furnished unless otherwise specified.