



Z1201-N_4-JC-RYK17

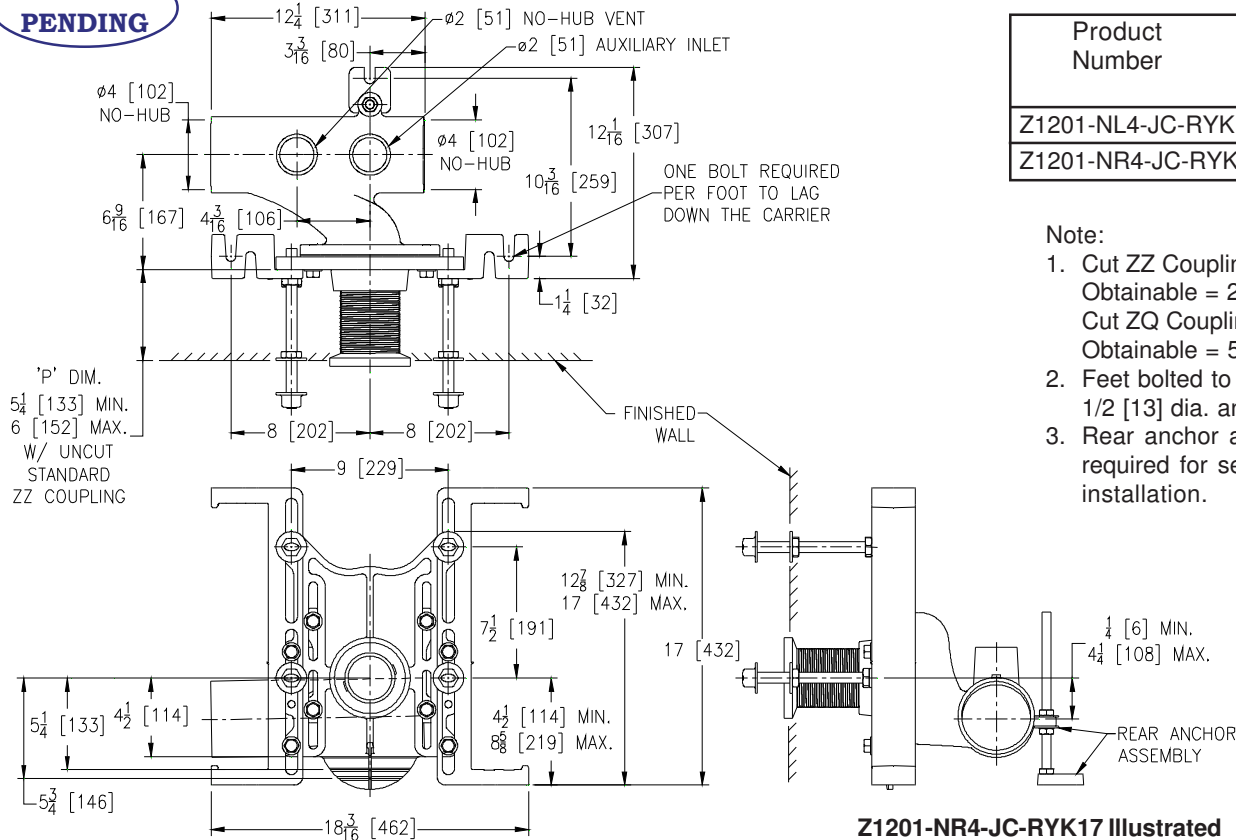
17 [432] ONE PIECE RYK FOOT SUPPORT EZCARRY® ADJUSTABLE
HORIZONTAL HIGH PERFORMANCE SIPHON JET NO-HUB WATER
CLOSET CARRIER SYSTEM W/ 2 [51] AUXILIARY INLET W/ 1/8 BEND

SPECIFICATION SHEET

TAG _____

**PATENT
PENDING**

Dimensional Data (inches and [mm]) are Subject to Manufacturing Tolerances and Change Without Notice



Product Number	Approx. Wt. lbs [kg]
Z1201-NL4-JC-RYK17	59 [27]
Z1201-NR4-JC-RYK17	

Note:

1. Cut ZZ Coupling, Min. 'P' Dim. Obtainable = 2 [51]
Cut ZQ Coupling, Min. 'P' Dim. Obtainable = 5 [127]
2. Feet bolted to floor using min. 1/2 [13] dia. anchors.
3. Rear anchor assembly required for secure installation.

Z1201-NR4-JC-RYK17 Illustrated

ENGINEERING SPECIFICATION: ZURN Z1201-N_4-JC-RYK17

EZCarry® horizontal siphon jet water closet carrier system, with high performance waterway and 4" [102 mm] no-hub connections. System includes Dura-Coated cast iron main fitting with hydro-mechanically optimized sweep, 2" [51mm] auxiliary inlet with 1/8 bend, and extended 2" [51 mm] vent, adjustable gasketed faceplate, floor mounted 17" [432 mm] one piece RYK foot supports, heavy-duty 1/2" [13 mm] rear anchor tie down, fixture bolts, trim, and stud protectors, bonded "Neo-Seal" gasket, and corrosion resistant, adjustable 3" [76 mm] dia. X 6" [152 mm] coupling with integral test cap designed to increase flow velocity and line carry. EZCarry® system complies with all requirements of ASME A112.6.1M up to a 500 lbs [227 kg] maximum static load rating.

OPTIONS (Check/specify appropriate options)

- ____ Z1201-NL4-RYK17 4 [102] No-Hub Left Hand Inlet with Flow to Right
____ Z1201-NR4-RYK17 4 [102] No-Hub Right Hand Inlet with Flow to Left

PREFIXES

- ____ Z D.C.C.I. System with Zurn ZZ Adjustable Coupling*
____ ZQ D.C.C.I. System with NPT Faceplate, Non-Adjustable Coupling

SUFFIXES

- | | |
|---|--|
| ____ -A Auxiliary Support Assembly
(For 'P' Dim. Greater than 18 [457]) | ____ -F Floor Mounted, Back Outlet Fixture Support |
| ____ -CC Corrosion Resistant Cast Iron Coupling
(2-1/4 [57] thru 12 [305]) | ____ -G Galvanized Cast Iron |
| ____ -CE EZ-Set™ Coupling (Available 6 [152], 12 [305] or
longer when specified. Minimum length=5 [127]) | ____ -M Auxiliary Foot Support
(for 'P' Dim. 10 thru 18 [254 thru 457]) |
| ____ -CL Custom Length Standard Coupling with Integral Test Cap
(Specify Length 4, 8, 10, 12 [102, 203, 254, 305]) | ____ -VP Vandal-Proof Trim |
| ____ -CS 2-1/4 [57] Polymer Coupling with Integral Test Cap | ____ -45 Finishing Frame for Siphon Jet System |
| | ____ -50 Flush Valve Supply Support for Water Closets |

* Regularly furnished unless otherwise specified.