

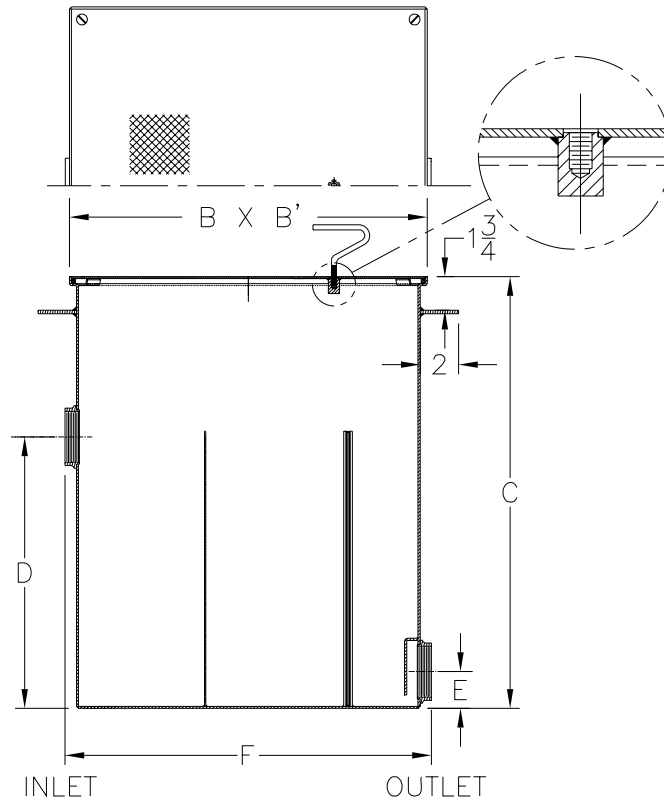


# Z1185-107

## LINT INTERCEPTOR WITH ANCHOR FLANGE AND INTEGRAL EXTENSION

TAG \_\_\_\_\_

Dimensional Data (inches and [ mm ]) are Subject to Manufacturing Tolerances and Change Without Notice



Size No. of Machines	Inlet/Outlet Size**	Flow Rate G.P.M. [L]	Approx. Wt. Lbs. [kg]	Dimensions In Inches					
				B	B'	C	D	E	F
3	2 [50]	30 [113]	262 [119]	17 [432]	17 [432]	57 1/4 [1454]	13 1/2 [343]	3 1/4 [82]	17 1/4 [438]

**ENGINEERING SPECIFICATION:** ZURN Z1185-107 Acid Resistant Coated interior and exterior fabricated steel lint interceptor, non-skid secured cover, stainless lint intercepting secondary screen assembly and permanent primary straining baffle, anchor flange, and built-in extension. Regularly furnished with high inlet and low outlet.

**OPTIONS** (Check/specify appropriate options)

**PREFIXES**

\_\_\_\_\_ Z Acid Resistant Coated Fabricated Steel\*

**SUFFIXES**

\_\_\_\_\_ -RS Stainless Steel Screen Replacement Assembly

REV.	DATE: 10/17/06	C.N. NO. 95746
DWG. NO. P-15341 PRODUCT NO. Z1185-107		

\*REGULARLY FURNISHED UNLESS OTHERWISE SPECIFIED