

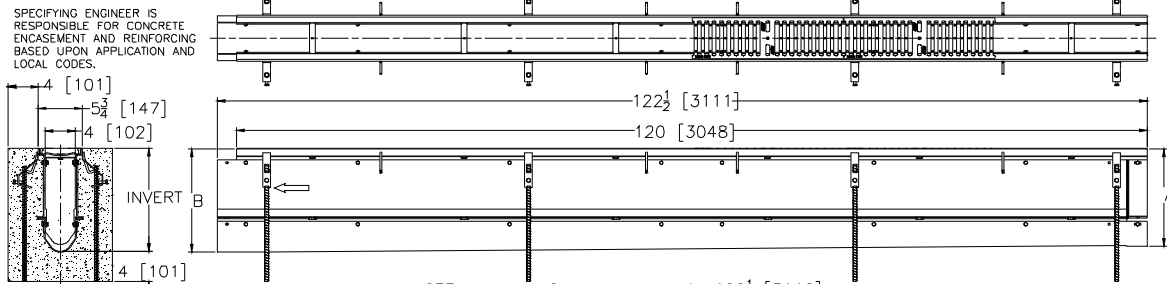


ZF806-HDG-SW

SPECIFICATION SHEET

6 [159] WIDE REVEAL FIBER REINFORCED POLYMER TRENCH DRAIN SYSTEM W/HEAVY-DUTY GALVANIZED FRAME W/8.1 [206] SIDEWALL EXTENSION TAG _____

Dimensional Data (inches and [mm]) are Subject to Manufacturing Tolerances and Change Without Notice



ENGINEERING SPECIFICATION: Zurn ZF806-HDG-SW

Channels shall be 120 [3048] long, 6 [152] wide and have a 4 [102] throat. Modular channel sections shall be made of Fiber Reinforced Polymer (FRP). Shall have a positive mechanical connection between channel sections that will not separate during the installation. Channels shall weigh less than 2.31 lbs.[1.05kg] per linear foot, have a smooth, 1-1/2 [38] radiused self cleaning bottom with a Manning's coefficient of .009 and .75% or neutral 0% built in slope. Channels shall have FRP Side Walls attached for an additional (8.1 [206]) added to the standard channel invert for additional flow capability shown in chart below. Shall be provided with standard GDC grates that lock down to frame. Zurn 6 [152] wide reveal Galvanized Ductile Iron Slotted Grate conforming to ASTM specification A536, Grade 80-55-06. Ductile Iron grate is rated class C per the DIN EN1433 top load classifications. Supplied in 20 [508] nominal lengths with 1/2 [13] wide slots, and 3/4 [19] bearing depth. Grate has an open area of 28.6 sq. in per ft. [60,521 sq. mm per meter]. The #10 gage thick Heavy-Duty Carbon Steel Galvanized Frame Assembly conforms to ASTM specification A36 and Galvanizing conforms to ASTM specification A123. Frames shall mechanically lock into the concrete surround at a maximum spacing of every 20 [508] with 16 concrete anchors per 120 [3048]. Frames shall have rebar attachment brackets as standard to secure trench in its final location. Grate lockdown bars are to be integral to the frame. All welds must be performed by a certified welder per ASTM standard AWS D1.1. Frames and Channels shall be produced in the U.S.A.

PREFIX OPTIONS (Check/specify appropriate options)

___ ZF Ten-foot Fiber Reinforced Polymer (FRP)*

SUFFIX OPTIONS (Check/specify appropriate options)

Outlet Adapters Add/Each

___ E1 Closed End Cap
 ___ E2 2 [51] No-Hub End Outlet
 ___ E3 3 [76] No-Hub End Outlet
 ___ E4 4 [102] No-Hub End Outlet
 ___ E6 6 [152] No-Hub End Outlet
 ___ U2 2 [51] No-Hub Bottom Outlet
 ___ U3 3 [76] No-Hub Bottom Outlet
 ___ U4 4 [102] No-Hub Bottom Outlet
 ___ U6 6 [152] No-Hub Bottom Outlet

Grate Options (Load Classifications are per DIN EN1433)

___ BDC Black Acid Resistant Epoxy Coated Ductile Grate - Class C
 ___ BDE Black Acid Resistant Epoxy Coated Ductile Grate - Class E
 ___ BG Galvanized Ductile Iron Cast Bar Grate - Class C
 ___ DC Ductile Iron Solid Cover - Class C
 ___ DBG Ductile Iron Cast Bar Grate - Class C
 ___ DGC Ductile Iron Slotted Grate - Class C *
 ___ DGE Ductile Iron Slotted Grate - Class E
 ___ GDC Galvanized Ductile Slotted Grate - Class C
 ___ GDE Galvanized Ductile Slotted Grate - Class E
 ___ GHPD Galvanized Heel-Proof Ductile Grate - Class B
 ___ GHPDE Galvanized Heel-Proof Ductile Grate - Class E
 ___ HPD Heel-Proof Ductile Slotted Grate - Class B
 ___ HPDE Heel-Proof Ductile Slotted Grate - Class E
 ___ HPP Heel-Proof Polyethylene Grate - Class A
 ___ LD Ductile Iron Longitudinal Slotted Grate - Class B
 ___ RFG Reinforced Galvanized Steel Slotted Grate - Class B
 ___ RPG Reinforced Galvanized Perforated Grate - Class B

Miscellaneous Options

___ DB Bottom Dome Strainer
 ___ JC Joint Connector
 ___ SW 8.1 [206] High Sidewall Extension Adapter (Per Pair)
 ___ VP Vandal-Proof Lockdown

MADE in the U.S.A. (Load Classifications are per DIN EN1433)

___ -AWG Aluminum Wire Grate - Class A
 ___ -BDE-USA Black Acid Resistant Epoxy Coated Ductile Grate- Class E
 ___ -DGC-USA Ductile Iron Slotted Grate - Class C
 ___ -DGE-USA Ductile Iron Slotted Grate - Class E
 ___ -FG Fabricated Galvanized Steel Slotted Grate - Class A
 ___ -GDC-USA Galvanized Ductile Slotted Grate - Class C
 ___ -GDE-USA Galvanized Ductile Slotted Grate - Class E
 ___ -GHPDE-USA Galvanized Heel-Proof Ductile Grate - Class E
 ___ -HPDE-USA Heel-Proof Ductile Slotted Grate - Class E

Decorative Grate Options (Load Classifications are per DIN EN1433)

___ -BCD Bronze Circular Decorative Grate - Class A
 ___ -BDD Bronze Diagonal Decorative Grate - Class A
 ___ -DCD Ductile Iron Circular Decorative Grate - Class C
 ___ -DDD Ductile Iron Diagonal Decorative Grate - Class A
 ___ -DOG Ductile Iron Decorative Grate - Class A
 ___ -DWV Ductile Wave Decorative Grate - Class A
 ___ -HPB Heel-Proof Bronze Slotted Grate - Class A

Decorative MADE in the U.S.A. (Load Classifications are per DIN EN1433)

___ -PG Perforated Galvanized Steel Grate - Class A
 ___ -PPC Plastic Perforated Grate - Class C
 ___ -BZ Bronze Decorative Grate - Class A
 ___ -NBZ Nickel Bronze Decorative Grate - Class A

*REGULARLY FURNISHED UNLESS OTHERWISE SPECIFIED

REV. B DATE: 1/18/12 C.N. NO. 122659
 DWG. NO. 308117 PRODUCT NO. ZF806-HDG-SW

ZURN INDUSTRIES, LLC ♦ SPECIFICATION DRAINAGE OPERATION ♦ 1801 Pittsburgh Ave. ♦ Erie, PA 16514

Phone: 814455-0921 ♦ Fax: 814454-7929 ♦ World Wide Web: www.zurn.com

In Canada: ZURN INDUSTRIES LIMITED ♦ 3544 Nashua Drive ♦ Mississauga, Ontario L4V1L2 ♦ Phone: 905405-8272 Fax: 905405-1292