



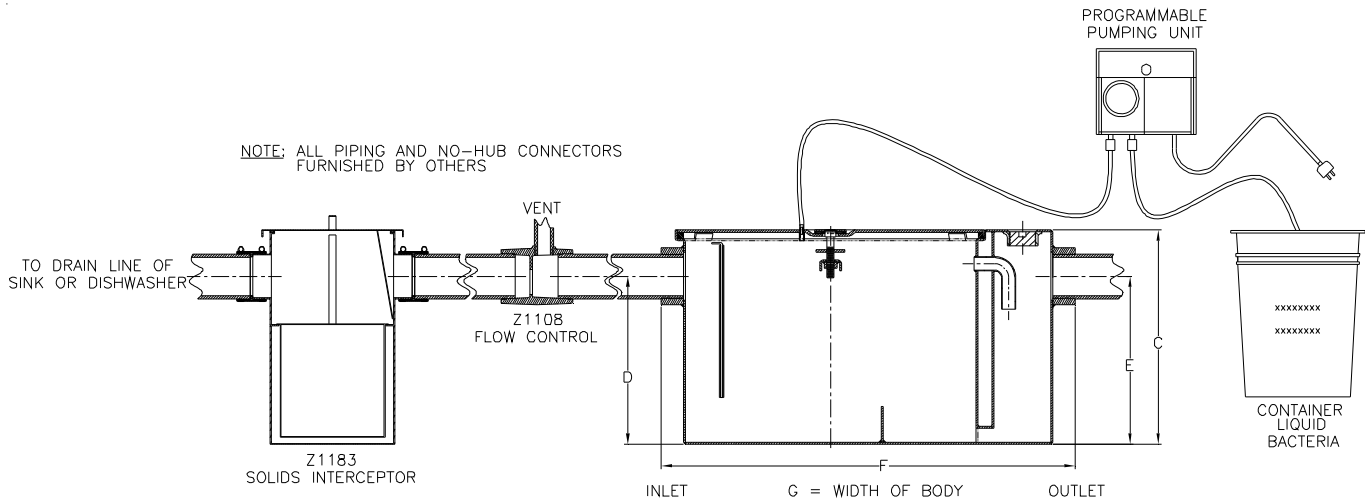
# Z1174-76

## GREASE INTERCEPTOR WITH Z1183 SOLIDS INTERCEPTOR COMBINATION AND GREASE EATING BACTERIA DOSING UNIT

SPECIFICATION SHEET

TAG \_\_\_\_\_

Dimensional Data (inches and [ mm ]) are Subject to Manufacturing Tolerances and Change Without Notice



Size	Inlet/Outlet Size**	Flow Rate G.P.M. [L]	Capacity		Approx. Wt. Lbs. [kg]	Dimensions in Inches			
			Water Gal. [L]	Grease Lbs. [kg]		C	D/E	F	G
900	3-4 [76-102]	75 [284]	65 [246]	150 [68]	316 [143]	22 3/4 [578]	18 1/2 [470]	36 [470]	28 5/8 [727]

### ENGINEERING SPECIFICATION: ZURN Z1174-76

Acid Resistant Coated interior and exterior fabricated steel grease interceptor with automatic bacteria dosing Unit. PDI, rated at \_\_\_ GPM and \_\_\_ Lbs. grease capacity, with internal air relief by-pass, bronze cleanout plug and visible double wall trap seal with removable pressure equalizing/flow diffusing inlet baffle, and fixed bottom outlet baffle. Gasketed nonskid secured cover with center tie down assembly, complete with Z1108 flow control fitting. Furnished with Z1183 solids interceptor, 110vac pump, pump mounting hardware, 15 feet [4572 mm] of poly tubing and 5 gallons [19 L] of Grease Eating Bacteria. Regularly furnished with inlet and outlet in high position. Note: Location of outlet from bottom of interceptor cannot be changed.

### PREFIXES

- \_\_\_ Z Acid Resistant Coated Fabricated Steel\*
- \_\_\_ ZS All Type 304 Fabricated Stainless Steel

### SUFFIXES

- \_\_\_ -1 1 gallon [4 L] Grease Eating Bacteria only
- \_\_\_ -5 5 gallon [19 L] Grease Eating Bacteria only
- \_\_\_ -BB Timer Battery Backup
- \_\_\_ -CS Custom Screens (for Z1183). Specify material and perforation size required.
- \_\_\_ -P Pump only, 110vac
- \_\_\_ -RK Retrofit kit, pump and bacteria (5 gal. [19 L]) only
- \_\_\_ -YR Replacement stainless steel basket assembly (for Z1183).

\*\*Inlet and outlet sizes shown indicate standard operating sizes and flow control setting.  
Specify Inlet/Outlet size: 3 [76] \_\_\_\_, 4 [102] \_\_\_\_

REV. A	DATE: 03/19/08	C.N. NO. 98255
DWG. NO. P-14929	PRODUCT NO. Z1174-76	

\*REGULARLY FURNISHED UNLESS OTHERWISE SPECIFIED