

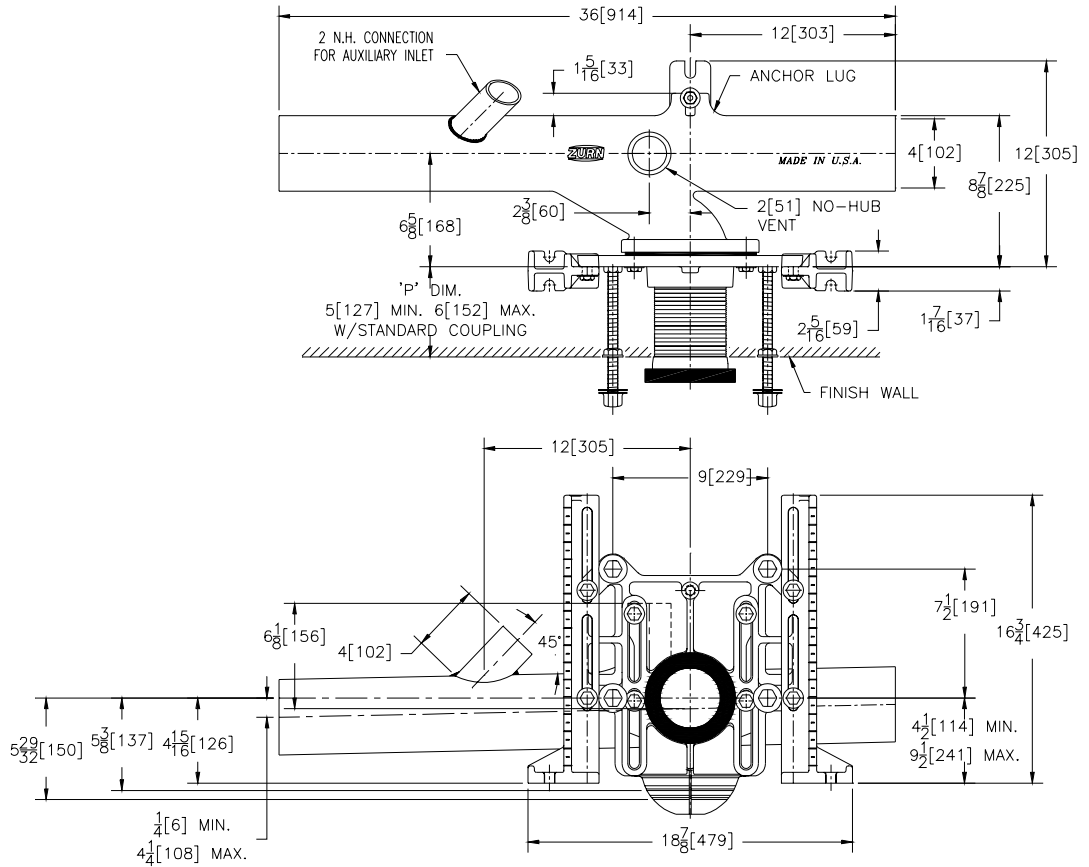


ZE-1203-95

ADJUSTABLE HORIZONTAL SIPHON JET NO-HUB W/ 2 [51] NO-HUB AUXILIARY INLET

TAG _____

Dimensional Data (inches and [mm]) are Subject to Manufacturing Tolerances and Change Without Notice



Product Number	Approx. Wt. Lbs. [kg]
ZE-1203-NL4	84[38]
ZE-1203-NR4	

ENGINEERING SPECIFICATION: ZURN ZE-1203-N4() Adjustable, horizontal siphon jet water closet "Rigid System" with 4 [102] No-Hub connections. Complete with Dura-Coated cast iron right hand or left hand main fitting, with 2 [51] vent, adjustable gasketed face plate, universal floor mounted foot supports, corrosion resistant adjustable ABS coupling with integral test cap, 2 [51] auxiliary inlet fixture bolts, trim, and stud protectors. Rear anchor tie down and bonded "Neo-Seal" gasket.

OPTIONS (Check/specify appropriate options)

Z-1203-NR4	4 [102] No-Hub Right Hand Inlet with Flow to Left
Z-1203-NL4	4 [102] No-Hub Left Hand Inlet with Flow to Right

PREFIXES

_____ ZE-	D.C.C.I. System with Zurn "ZZ" Adjustable Coupling*
_____ ZQ-	D.C.C.I. System with NPT Faceplate, Non-Adjustable Coupling

SUFFIXES

_____ -A	Auxiliary Support Assembly (For 'P' Dim. Greater than 18 [457])
_____ -B	Blowout Type Fixture Support
_____ -BC	Back Cleanout
_____ -CC	Corrosion Resistant Cast Iron Coupling (6 [152] to 12 [305])
_____ -CL	Coupling Length Greater Than 12 [305] (Specify Length Required)
_____ -F	Floor Mounted Back Outlet Fixture Support
_____ -G	Galvanized Cast Iron
_____ -M	Auxiliary Foot Support (For 'P' Dim. 10 [254] - 18 [457])

Note:

1. Min. 'P' Dim. Obtainable=2 [51]
 2. Feet bolted to floor using min. 1/2 [13] dia. bolts and back slots on carrier feet.
 3. Back anchor foot required for secure installation.
- | | |
|-----------|--|
| _____ -VP | Vandal Proof Trim |
| _____ -W | Adapter Assembly for Womens Urinal |
| _____ -XH | Extra-Heavy-Duty 500-Lb. Carrier |
| _____ -X3 | 3" [76] Foot Extension Assembly |
| _____ -X4 | 4" [102] Foot Extension Assembly |
| _____ -29 | Mechanical Test Cap Assembly |
| _____ -45 | Finishing Frame for Siphon Jet System (For Blowout System specify -45-B) |
| _____ -50 | Flush Valve Supply Support for W.C. |
| _____ -61 | "ZZ" Coupling Wrench |

*REGULARLY FURNISHED UNLESS OTHERWISE SPECIFIED

REV. A	DATE: 3/8/01	C.N. NO. 87324
DWG. NO. P-14700	PRODUCT NO. Z-1203-95	