



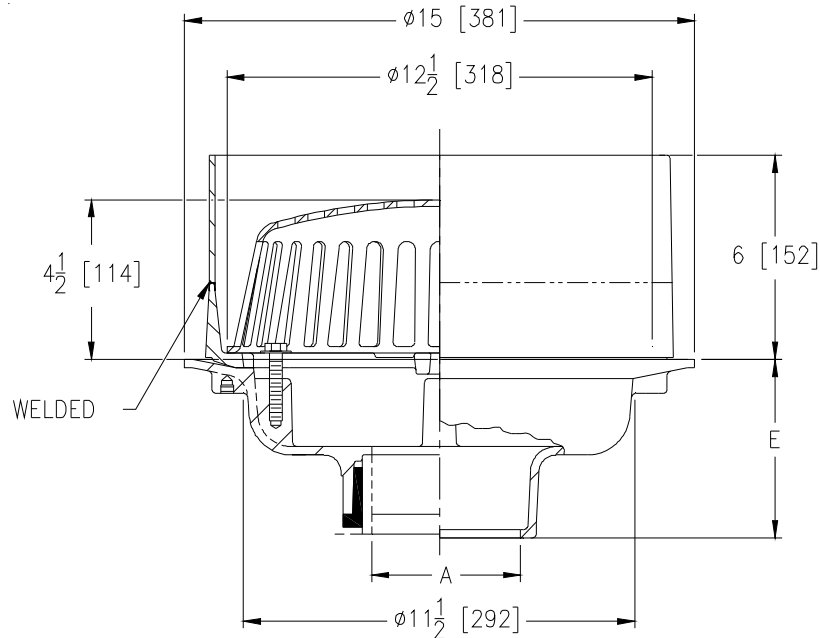
Z100-350

15 [381] DIAMETER ROOF DRAIN WITH 6 [152]
EXTERNAL WATER DAM

SPECIFICATION SHEET

TAG _____

Dimensional Data (inches and [mm]) are Subject to Manufacturing Tolerances and Change Without Notice



A - Pipe Size In. [mm]	Approx. Wt. Lbs [kg]	Dome Open Area Sq. In. [cm ²]
2, 3, 4 [51, 76, 102]	43 [20]	103 [665]
6 [152]	44 [20]	
8 [203]	45 [20]	

ENGINEERING SPECIFICATION: ZURN Z100-350

15" [381mm] Diameter roof drain. Dura-Coated cast iron body with 6" [152mm] high combination membrane flashing clamp/gravel guard, and low silhouette Poly-Dome strainer.

OPTIONS (Check/specify appropriate options)

PIPE SIZE

- 2,3,4,6, 8 [51, 76, 102, 152, 203]
- 2,3,4,6, 8 [51, 76, 102, 152, 203]
- 2,3,4,6, 8 [51, 76, 102, 152, 203]
- 2,3,4 [51, 76, 102]

(Specify size/type) **OUTLET**

- _____ IC Inside Caulk
- _____ IP Threaded
- _____ NH No-Hub
- _____ NL Neo-Loc

'E' BODY HT. DIM.

- 5-1/4 [133]
- 3-3/4 [95]
- 5-1/4 [133]
- 4-9/16 [116]

PREFIXES

- ___ Z D.C.C.I. Body with Poly-Dome*
- ___ ZA D.C.C.I. Body with 6-3/4 [171] High Aluminum Dome
- ___ ZC D.C.C.I. Body with Cast Iron Dome
- ___ ZRB D.C.C.I. Body with Plain Bronze Dome

SUFFIXES

- ___ -AC Angular Underdeck Clamp
- ___ -AR Acid Resistant Epoxy Coated
- ___ -BS Bronze Mesh Screen Over Dome
- ___ -C Underdeck Clamp
- ___ -E Static Extension 1" [25] thru 4" [102] (Specify Ht.)
- ___ -EA Adjustable Extension Assembly 1-3/4 [44] thru 3-1/2 [89]
- ___ -ES Static Extension with Secondary Clamp Collar at Body
- ___ -FG Flush Grate (Replaces Dome Strainer)
- ___ -G Galvanized Cast Iron
- ___ -GD Galvanized Cast Iron Dome (ZC only)
- ___ -HD 6-3/4 [171] High Aluminum Dome (148 sq. in. [955 cm²] open area)
- ___ -R Roof Sump Receiver
- ___ -SS Stainless Steel Mesh Screen Over Dome
- ___ -VP Vandal Proof Secured Top
- ___ -XJ Vertical Expansion Joint (See Z190)
- ___ -90 90° Threaded Side Outlet Body

* Regularly furnished unless otherwise specified.