



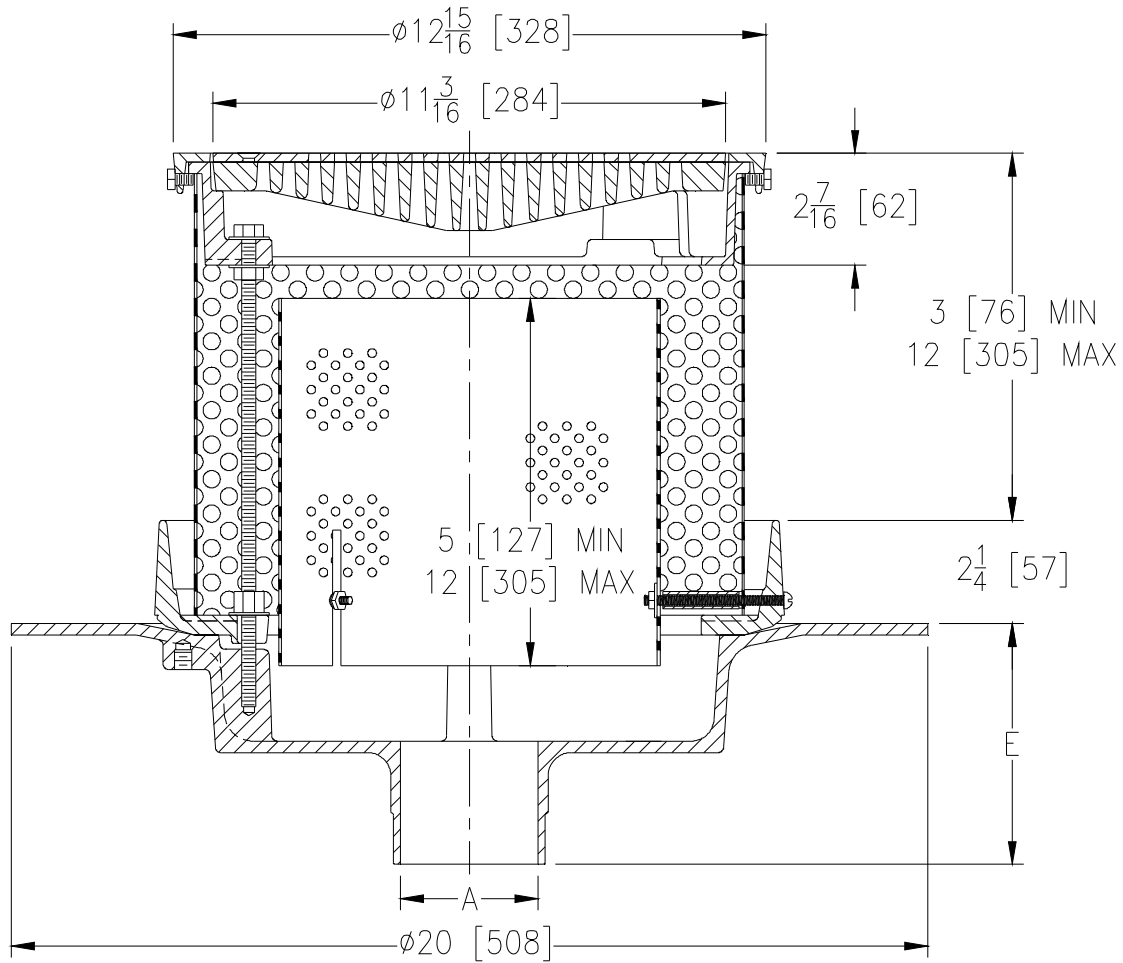
Z107-97

20 [508] WIDE DECK DRAIN W/ PERFORATED EXTENSION AND FILTER

SPECIFICATION SHEET

TAG _____

Dimensional Data (inches and [mm]) are Subject to Manufacturing Tolerances and Change Without Notice



A Pipe Size In.	Approx. Wt. Lbs. [kg]	Grate Open Area Sq. In. [cm ²]
3-4 [76-102]	49 [22]	33 [213]
6-8 [152-203]	51 [23]	

ENGINEERING SPECIFICATION: ZURN Z107-97

20 Diameter wide deck drain. Dura-Coated cast iron body with combination membrane flashing clamp/gravel guard, perforated extension, secondary perforated filter, frame and heavy-duty slotted grate with nickel bronze frame and heel-proof grate.

OPTIONS (Check/specify appropriate options)

PIPE SIZE

3,4,6 [76,102,152]
3,4,6,8 [76,102,152,203]

(Specify size/type) **OUTLET**

_____ IC Inside Caulk
_____ NH No-Hub

E BODY HT. DIM.

5 1/4 [133]
5 1/4 [133]

PREFIXES

_____ ZN D.C.C.I. Body Assembly w/ Polished Nickel Bronze Top*

REV. A	DATE: 4/4/11	C.N.NO.121125
DWG. NO. P-15407		PRODUCT NO. Z107-97

*REGULARLY FURNISHED UNLESS OTHERWISE SPECIFIED