



Z1183-FC-82

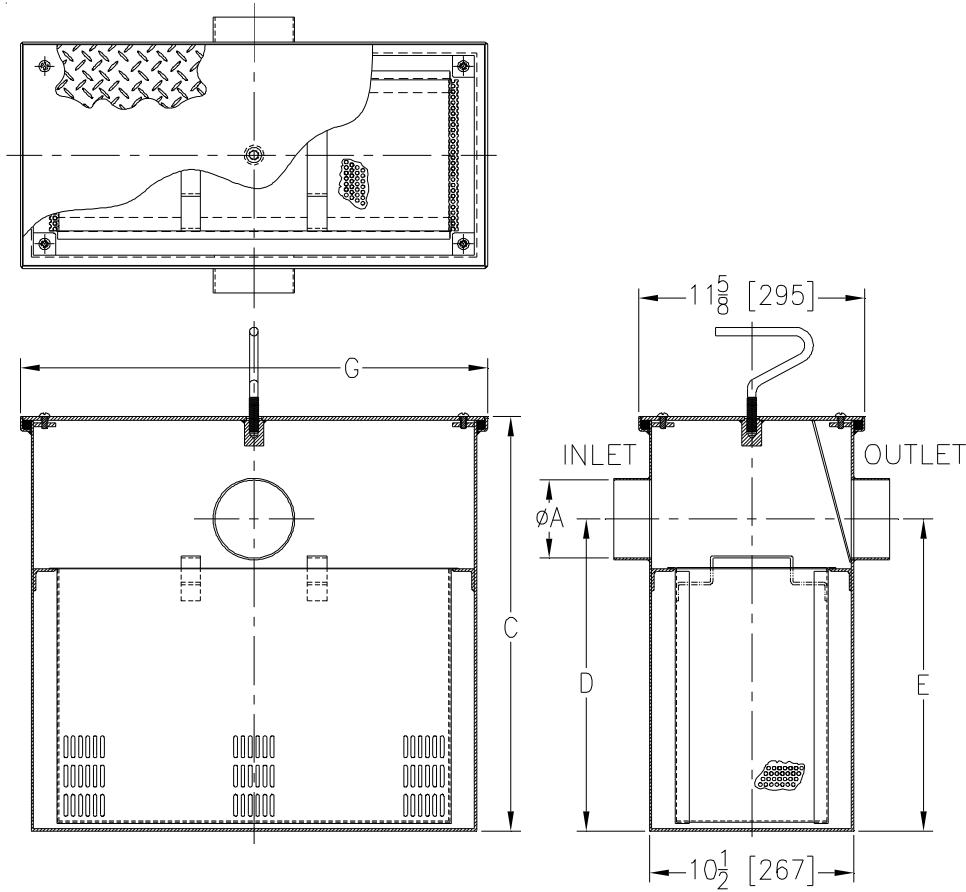
SOLIDS INTERCEPTOR

W/ FLUSH COVER, 4 [102] INLET/OUTLET, & EXTENSION

SPECIFICATION SHEET

TAG _____

Dimensional Data (inches and [mm]) are Subject to Manufacturing Tolerances and Change Without Notice



Size	'A' Inlet/Outlet Size	Flow Rate G.P.M. [L]	Solids Cap. Cubic Ft. [m ³]	Dimensions In Inches		
				C	G	D/E
900	4 [102]	75 [284]	1.61 [.046]	47 3/4 [1213]	24 3/4 [629]	18 1/2 [470]

ENGINEERING SPECIFICATION:
ZURNZ1183-FC-82

Large capacity acid resistant coated interior and exterior fabricated steel, or stainless steel solids interceptor, for recessed installation with screen attached to gasketed, non-skid secured cover with removable lift handle, and removable sediment basket.

OPTIONS (Check/specify appropriate option)

PREFIXES

- ___ Z Acid Resistant Coated Fabricated Steel*
- ___ ZS Type 304 Fabricated Stainless Steel

SUFFIXES

- ___ -CS Custom Screens (Specify material and perforation size required)
- ___ -E Acid Resistant Coated Interior and Exterior Fabricated Steel Extension Section.
- ___ -YR Replacement Stainless Steel Bucket Assembly

REV. B	DATE: 12/09/10	C.N. NO. 120646
DWG. NO. 303655	PRODUCT NO. Z1183-FC-82	

*REGULARLY FURNISHED UNLESS OTHERWISE SPECIFIED