



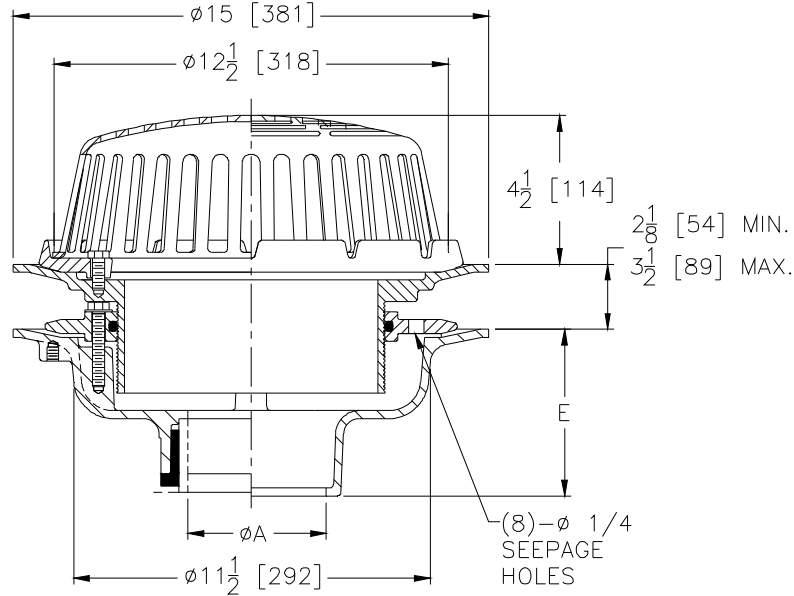
**Z100-225**

**SPECIFICATION SHEET**

**15 [381] DIAMETER MAIN ROOF DRAIN  
W/ ADJUSTABLE EXTENSION AND SEEPAGE HOLES**

TAG \_\_\_\_\_

Dimensional Data (inches and [mm]) are Subject to Manufacturing Tolerances and Change Without Notice



A- Pipe Size In.	Approx. Wt. Lbs. [kg]	Dome Open Area Sq. In. [cm <sup>2</sup> ]
2-3-4 [51-76-102]	38 [17]	103 [665]
5-6 [127-152]	39 [12]	
8 [203]	40 [13]	

**ENGINEERING SPECIFICATION: ZURN Z100-225**

15 [381] Diameter roof drain. Dura-Coated cast iron body with combination membrane flashing clamp/gravel guard, adjustable extension with seepage holes, secondary clamping collar with o-ring and low silhouette Poly-Dome strainer.

**OPTIONS** (Check/specify appropriate options)

**PIPE SIZE**

- 2 thru 6, 8 [51 thru 152,203]
- 2 thru 6, 8 [51 thru 152,203]
- 2 thru 6, 8 [51 thru 152,203]
- 2,3,4 [51,76,102]

(Specify size/type) **OUTLET**

- \_\_\_\_\_ IC Inside Caulk
- \_\_\_\_\_ IP Threaded
- \_\_\_\_\_ NH No-Hub
- \_\_\_\_\_ NL Neo-Loc

**E BODY HT. DIM.**

- 5 1/4 [133]
- 3 3/4 [95]
- 5 1/4 [133]
- 4 5/8 [117]

**PREFIXES**

- \_\_\_\_\_ **Z** D.C.C.I. Body with Poly-Dome\*
- \_\_\_\_\_ **ZA** D.C.C.I. Body with 6 3/4 [171] High Aluminum Dome
- \_\_\_\_\_ **ZC** D.C.C.I. Body with Cast Iron Dome
- \_\_\_\_\_ **ZRB** D.C.C.I. Body with Plain Bronze Dome

**SUFFIXES**

- |  |   |
|--|---|
| _____ <b>-AC</b> Angular Underdeck Clamp   | _____ <b>-R</b> Roof Sump Receiver  |
| _____ <b>-AR</b> Acid Resistant Epoxy Coated Finish  | _____ <b>-SC</b> Secondary Clamping Collar                                    |
| _____ <b>-AW</b> 3/4 [19] to 4 [102] Adj. Water Level Regulator  | _____ <b>-SS</b> Stainless Steel Mesh Screen Over Dome                        |
| _____ <b>-BS</b> Bronze Mesh Screen Over Dome  | _____ <b>-TC</b> Neo-Loc Test Cap Gasket (2-4 [51-102] NL Bottom Outlet Only) |
| _____ <b>-C</b> Underdeck Clamp  | _____ <b>-VP</b> Vandal-Proof Secured Top                                     |
| _____ <b>-DP</b> Top-Set® Deck Plate (Replaces Both -C and -R)   | _____ <b>-W2</b> 2 [51] Internal Water Dam                                    |
| _____ <b>-DX</b> Dex-o-tex Flange  | _____ <b>-W3</b> 3 [76] Internal Water Dam                                    |
| _____ <b>-E</b> Static Extension 1 [25] thru 4 [102] (Specify Ht.)                                       | _____ <b>-W4</b> 4 [102] Internal Water Dam                                   |
| _____ <b>-ES</b> Static Extension with Secondary Clamp Collar at Body (For clamping at roof drain body.) | _____ <b>-XJ</b> Vertical Expansion Joint (See Z190)                          |
| _____ <b>-FG</b> Flush Grate   | _____ <b>-84</b> Stainless Steel Perforated Gravel Guard                      |
| _____ <b>-G</b> Galvanized Cast Iron   | _____ <b>-85</b> Stainless Steel Perforated Extension                         |
| _____ <b>-GD</b> Galvanized Cast Iron Dome (ZC only)   | _____ <b>-89</b> 2 [51] High External Water Dam                               |
| _____ <b>-HD</b> 6 3/4 [171] High Aluminum Dome Strainer (148 Sq. In. [955 cm <sup>2</sup> ] Open Area)  | _____ <b>-90</b> 90° Threaded Side Outlet Body                                |

\*REGULARLY FURNISHED UNLESS OTHERWISE SPECIFIED

REV. DATE: 05/20/10 C.N. NO. 111149

DWG. NO. 300616 PRODUCT NO. Z100-225

ZURN INDUSTRIES, LLC. ♦ SPECIFICATION DRAINAGE OPERATION ♦ 1801 Pittsburgh Ave. ♦ Erie, PA 16514

Phone: 814/455-0921 ♦ Fax: 814/454-7929 ♦ World Wide Web: www.zurn.com

In Canada: ZURN INDUSTRIES LIMITED ♦ 3544 Nashua Drive ♦ Mississauga, Ontario L4V1L2 ♦ Phone: 905/405-8272 Fax: 905/405-1292