



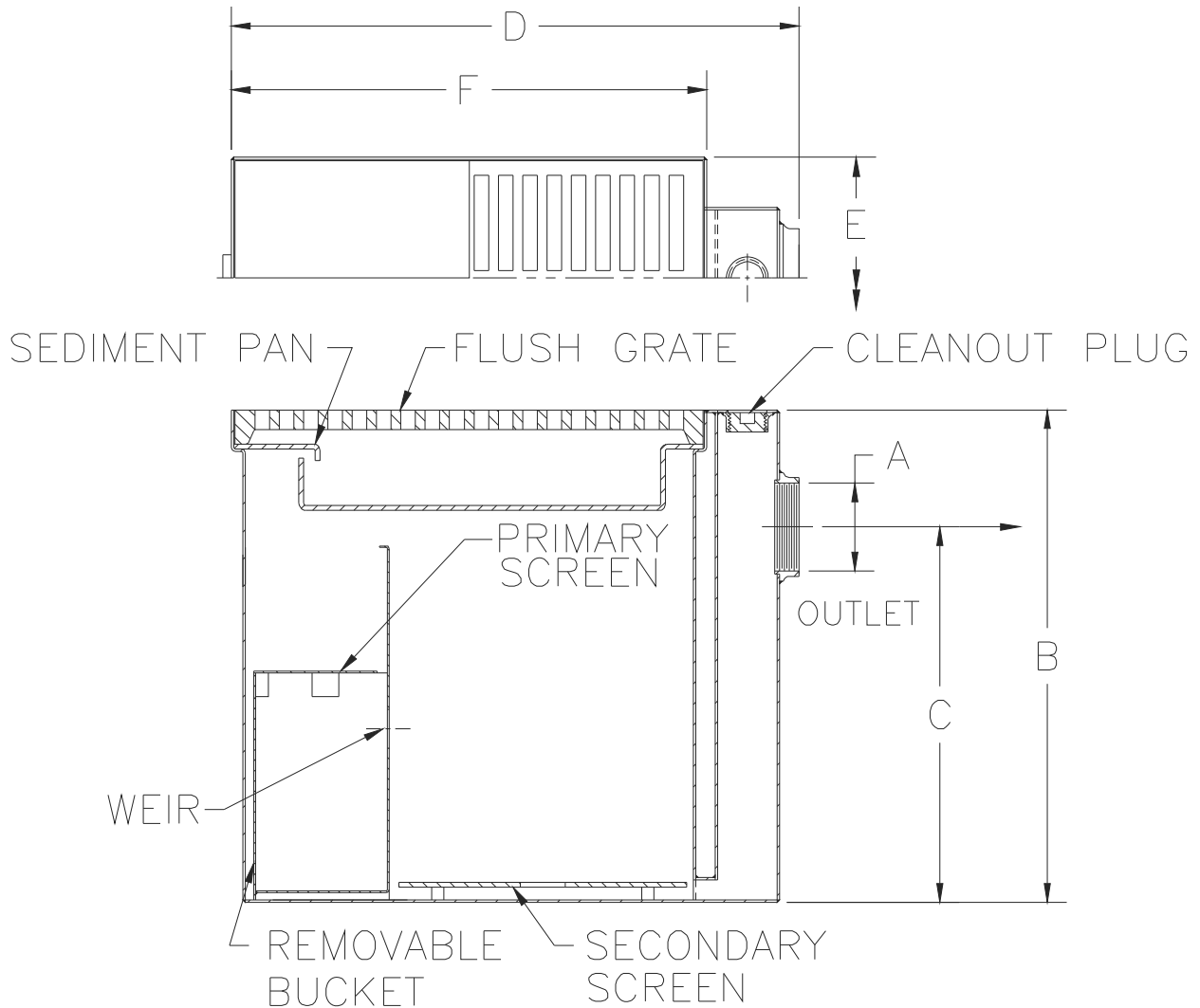
# Z1189-90

## STAINLESS STEEL OIL/SEDIMENT INTERCEPTOR W/ 3/4 GRATE

SPECIFICATION SHEET

TAG \_\_\_\_\_

Dimensional Data (inches and [ mm ]) are Subject to Manufacturing Tolerances and Change Without Notice



Size	Sludge Capacity lbs [kg]	Grate Open Area in <sup>2</sup> [cm <sup>2</sup> ]	No. of Grates	No. of Pans	Approx. Wt. lbs [kg]	Dimensions in inches [mm]					
						A Pipe Size	B	C	D	E	F
12	12 [5]	49 [316]	1	1	70 [32]	2 [50]	15 [381]	10-1/2 [267]	17-1/8 [435]	11-3/8 [289]	12-3/8 [314]

**ENGINEERING SPECIFICATION: ZURN Z1189-90**

All type 304 Stainless Steel oil/sediment interceptor, bronze cleanout plug and visible double wall trap seal, removable sediment bucket, horizontal baffle, internal vent connection, with Dura-Coated 3/4 cast iron grate.

**PREFIXES**

\_\_\_ Z All type 304 Stainless Steel\*

**SUFFIXES**

- \_\_\_ -DG Duresist Grate
- \_\_\_ -E Stainless steel extension section. (Specify 'B' Dim. required)
- \_\_\_ -K Anchor flange 1 3/4 [44] down from top and 2 [51] wide.
- \_\_\_ -KC Anchor flange 1 3/4 [44] down from top and 2 [51] wide with seepage holes and clamp collar.
- \_\_\_ -SC Heavy-Duty Solid Traffic Cover (max. safe live load 10,000 lbs. [4536kg.]

\* Regularly furnished unless otherwise specified.