



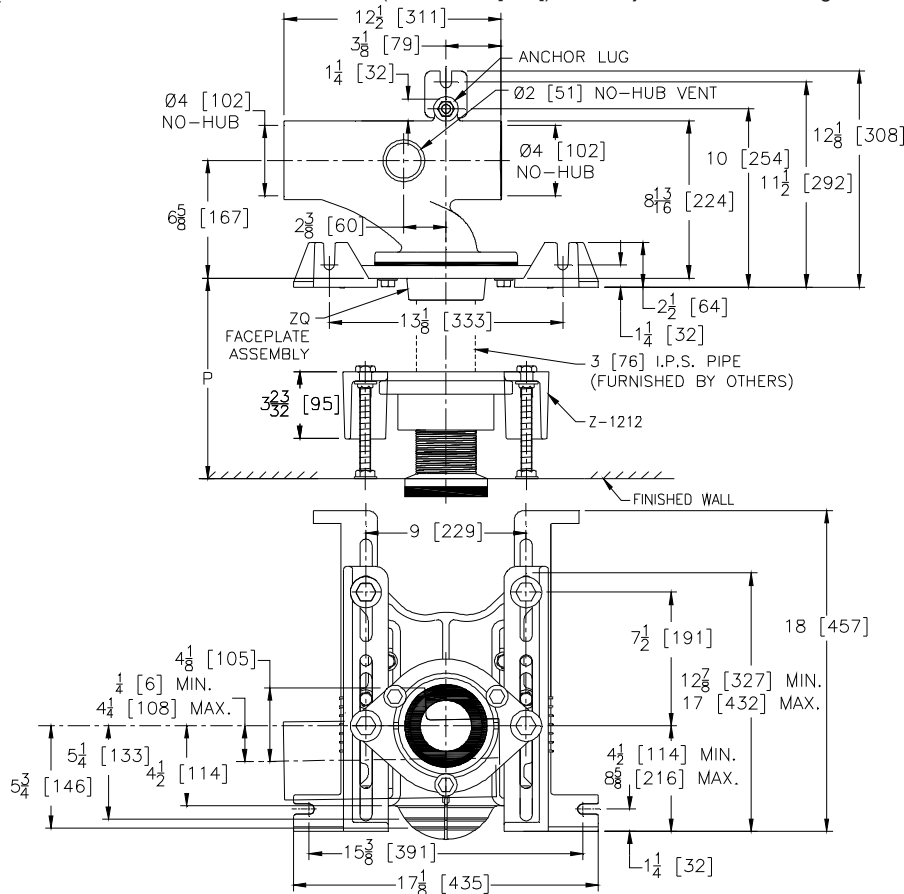
# Z1201-N\_4-A

EZCARRY® ADJUSTABLE HORIZONTAL HIGH  
PERFORMANCE SIPHON JET NO-HUB WATER  
CLOSET CARRIER SYSTEM WITH Z1212

SPECIFICATION SHEET

TAG \_\_\_\_\_

Dimensional Data (inches and [mm]) are Subject to Manufacturing Tolerances and Change Without Notice



Product Number	Approx. Wt. lbs [kg]
Z1201-NL4	86 [39]
Z1201-NR4	

Note:

1. P= Greater than 18 [457]
2. Feet bolted to floor using min. 1/2 [13] dia. anchors.
3. Rear anchor foot required for secure installation.

Z1201-NR4 Illustrated

## ENGINEERING SPECIFICATION: ZURN Z1201-N\_4-A

EZCarry® horizontal siphon jet water closet carrier system with high performance waterway and 4" [102mm] no-hub connections. System includes Dura-Coated cast iron main fitting with hydro-mechanically optimized sweep and extended 2" [51mm] vent, adjustable gasketed faceplate, floor mounted pre-fab slotted foot supports with top anchoring pre-fab support base, heavy-duty 1/2" [13mm] rear anchor tie down, fixture bolts, trim, stud protectors, bonded "Neo-Seal" gasket, and corrosion resistant, adjustable 3" [76mm] dia. X 6" [152mm] coupling with integral test cap designed to increase flow velocity and line carry. EZCarry® system complies with the requirements of ASME A112.6.1M up to a 500 lbs [227 kg] static load rating. Furnished with Z1212 Auxiliary Support System.

### OPTIONS (Check/specify appropriate options)

- \_\_\_ Z1201-NL4 4 [102] No-Hub Left Hand Inlet with Flow to Right  
\_\_\_ Z1201-NR4 4 [102] No-Hub Right Hand Inlet with Flow to Left

### PREFIXES

- \_\_\_ Z ZQ D.C.C.I. System with NPT Non-Adjustable Coupling\*

### SUFFIXES

- \_\_\_ -CE EZ-Set™ Coupling (NPSM 6 [152], 12 [305] or custom)  
(NPT 12 [305] or custom)  
\_\_\_ -G Galvanized Cast Iron  
\_\_\_ -JC 2 [51] Auxiliary Inlet with 1/8 Bend  
\_\_\_ -RYK17 One Piece Unistrut Pre-Fab Foot  
\_\_\_ -VP Vandal-Proof Trim  
\_\_\_ -45 Finishing Frame for Siphon Jet System  
\_\_\_ -50 Flush Valve Supply Support for Water Closets

\* Regularly furnished unless otherwise specified.